



MLS 7079209 Lake Home

\$399,000

1,728 sq ft
4 bedrooms
2 baths

42961 165th Street
Clitherall MN 56524

Waterfront: Trulse

Status: Active

Description:

Quiet, beautiful, and scenic, this one-of-a-kind property offers over 500 feet of level, hard-bottom shoreline in the heart of the lakes country. Situated on 10+ acres, this exceptional property is a rare opportunity for those seeking privacy, recreation, and endless possibilities. Enjoy excellent fishing right out your door, along with hunting opportunities on your own land. This spacious home features 4 bedrooms and 2 bathrooms, providing plenty of room for family and guests. Outbuildings include a 2 stall detached garage, a large machine shed, and a separate shop - perfect for hobbies, storage, or workspace needs. Whether you're looking for a year-round home, vacation retreat, hobby farm, or investment opportunity, this unique property offers so many options in a truly beautiful setting. Don't miss your chance to own this rare lakes country gem!

Additional Details:

Year Built	1915
Lot Acres	10.2
Lot Dimensions	10.2 acres
Garage Stalls	2
School District	542
Taxes	\$1,347
Taxes with Assessments	\$1,432
Tax Year	2026

Additional Features:

Basement: Unfinished **Fuel:** Propane **Garage:** 2 **Heat:** Forced Air **Sewer:** Private Sewer, Septic System Compliant - Yes, Tank with Drainage Field **Water:** Drilled, Private **Air Conditioning:** None

Driving Directions:

From 425th Ave & 165th St go East to dead end and property is right there.



Listed By:
Century 21 Atwood

Affinity Real Estate Inc. participates in the Regional Multiple Listing Service of Minnesota, Inc Broker Reciprocity (sm) program, allowing us to display other broker's listings on our website. All properties are subject to prior sale, change or withdrawal.



Call Affinity Real Estate

218-237-3333

info@affinityrealestate.com



Affinity Real Estate - 600 Park Avenue South - Park Rapids MN 56470



website: www.AffinityRealEstate.com | email: info@affinityrealestate.com | office: 218-237-3333 | fax:218-237-3377



\$399,000
MLS 7079209 Lake Home
42961 165th Street
Clitherall MN 56524



website: www.AffinityRealEstate.com | email: info@affinityrealestate.com | office: 218-237-3333 | fax:218-237-3377



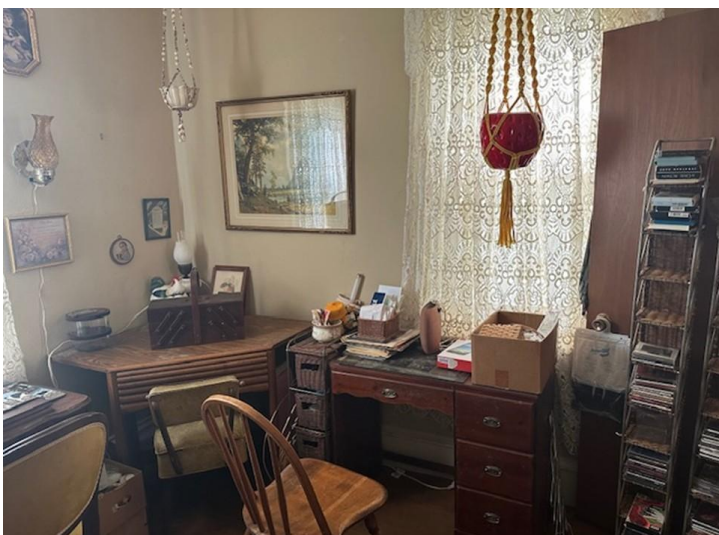
\$399,000
MLS 7079209 Lake Home
42961 165th Street
Clitherall MN 56524



website: www.AffinityRealEstate.com | email: info@affinityrealestate.com | office: 218-237-3333 | fax:218-237-3377



\$399,000
MLS 7079209 Lake Home
42961 165th Street
Clitherall MN 56524



website: www.AffinityRealEstate.com | email: info@affinityrealestate.com | office: 218-237-3333 | fax:218-237-3377

Affinity
REAL ESTATE INC

\$399,000
MLS 7079209 Lake Home
42961 165th Street
Clitherall MN 56524



website: www.AffinityRealEstate.com | email: info@affinityrealestate.com | office: 218-237-3333 | fax:218-237-3377

Affinity
REAL ESTATE INC

\$399,000
MLS 7079209 Lake Home
42961 165th Street
Clitherall MN 56524



website: www.AffinityRealEstate.com | email: info@affinityrealestate.com | office: 218-237-3333 | fax:218-237-3377



\$399,000
MLS 7079209 Lake Home
42961 165th Street
Clitherall MN 56524



website: www.AffinityRealEstate.com | email: info@affinityrealestate.com | office: 218-237-3333 | fax:218-237-3377

Affinity
REAL ESTATE INC

\$399,000
MLS 7079209 Lake Home
42961 165th Street
Clitherall MN 56524



website: www.AffinityRealEstate.com | email: info@affinityrealestate.com | office: 218-237-3333 | fax:218-237-3377



\$399,000
MLS 7079209 Lake Home
42961 165th Street
Clitherall MN 56524



website: www.AffinityRealEstate.com | email: info@affinityrealestate.com | office: 218-237-3333 | fax:218-237-3377

Affinity
REAL ESTATE INC

\$399,000
MLS 7079209 Lake Home
42961 165th Street
Clitherall MN 56524



website: www.AffinityRealEstate.com | email: info@affinityrealestate.com | office: 218-237-3333 | fax:218-237-3377

Affinity
REAL ESTATE INC

\$399,000
MLS 7079209 Lake Home
42961 165th Street
Clitherall MN 56524



website: www.AffinityRealEstate.com | email: info@affinityrealestate.com | office: 218-237-3333 | fax:218-237-3377



\$399,000
MLS 7079209 Lake Home
42961 165th Street
Clitherall MN 56524