



MLS 7079494 Residential

**\$399,900**

1,568 sq ft  
3 bedrooms  
2 baths

21509 County Road 22  
Brainerd MN 56401

Status: Coming Soon

**Description:**

Looking for that private country setting? You can find it here! This property has just over 51 acres to offer for excellent hunting, as well as pasture suitable for cattle, horses, etc. The home offers three bedrooms, two bathrooms, a large open concept living room space, separate but open formal dining area and large kitchen with unique built-ins and large center island, all on main floor living. An attached 2 stall garage makes going to the vehicle in the winter convenient as well as a detached 3+ stall garage for all the hobby farm toys or workshop needs. This property has a lot to offer so schedule your showing today!

**Additional Details:**

Year Built	2016
Lot Acres	51.16
Lot Dimensions	712x1319x277x1310x989x2647
Garage Stalls	5
School District	181
Taxes	\$2,234
Taxes with Assessments	\$2,234
Tax Year	2026

**Additional Features:**

**Fuel:** Propane **Heat:** Forced Air

**Driving Directions:**

From Brainerd; At Hwy 18 and Hwy 25 intersection go east 4.5 miles on Hwy 18 to a right on County Rd 23. Go 5.7 miles to a left on County Rd 22. go 5.5 miles to property on right; 21509.



Listed By:  
LPT Realty, LLC.

Affinity Real Estate Inc. participates in the Regional Multiple Listing Service of Minnesota, Inc Broker Reciprocity (sm) program, allowing us to display other broker's listings on our website. All properties are subject to prior sale, change or withdrawal.



**Call Affinity Real Estate**

**218-237-3333**

**info@affinityrealestate.com**



**Affinity Real Estate - 600 Park Avenue South - Park Rapids MN 56470**



website: [www.AffinityRealEstate.com](http://www.AffinityRealEstate.com) | email: [info@affinityrealestate.com](mailto:info@affinityrealestate.com) | office: 218-237-3333 | fax:218-237-3377



**\$399,900**  
MLS 7079494 Residential  
21509 County Road 22  
Brainerd MN 56401



website: [www.AffinityRealEstate.com](http://www.AffinityRealEstate.com) | email: [info@affinityrealestate.com](mailto:info@affinityrealestate.com) | office: 218-237-3333 | fax:218-237-3377



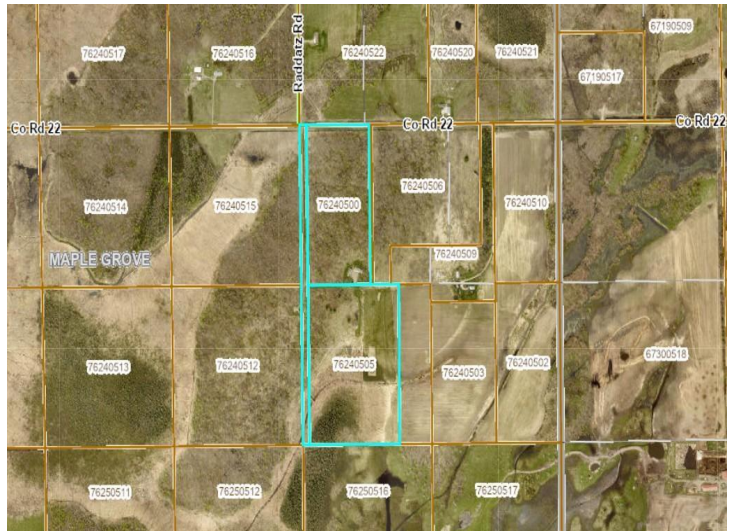
**\$399,900**  
MLS 7079494 Residential  
21509 County Road 22  
Brainerd MN 56401



website: [www.AffinityRealEstate.com](http://www.AffinityRealEstate.com) | email: [info@affinityrealestate.com](mailto:info@affinityrealestate.com) | office: 218-237-3333 | fax:218-237-3377

**Affinity**  
REAL ESTATE INC

**\$399,900**  
MLS 7079494 Residential  
21509 County Road 22  
Brainerd MN 56401



website: [www.AffinityRealEstate.com](http://www.AffinityRealEstate.com) | email: [info@affinityrealestate.com](mailto:info@affinityrealestate.com) | office: 218-237-3333 | fax: 218-237-3377

**Affinity**  
REAL ESTATE INC

**\$399,900**  
MLS 7079494 Residential  
21509 County Road 22  
Brainerd MN 56401