



MLS 7079503 Residential

\$364,900

1,696 sq ft
3 bedrooms
2 baths

1429 Campus Drive
Fergus Falls MN 56537

Status: Active

Description:

Experience the ease of modern living at Campus View Estates, a premier townhome community in Fergus Falls designed for comfort, convenience, and style. This newly completed 3 bedroom, 2 bathroom home offers true single level living with an open concept layout, vaulted ceilings, and a spacious kitchen featuring a center island and pantry that flows effortlessly into the main living and dining areas, perfect for everyday living and entertaining. The private primary suite serves as a relaxing retreat with a generous bedroom, ensuite bath, and walk through closet. Step outside to the covered concrete patio, an ideal spot to enjoy sunny Minnesota days and quiet evenings. Additional highlights include central air conditioning, a heated and insulated attached 2 stall garage, a low maintenance vinyl exterior, and in ground sprinklers. Lawn care and snow removal are handled by the association, allowing you to spend more time doing what you love. Qualified buyers may also take advantage of TIF financing which can significantly reduce special assessments. Schedule your private tour today and discover why Campus View Estates is one of Fergus Falls' most exciting new places to call home.

Additional Details:

Year Built	2027
Lot Acres	0.19
Lot Dimensions	Irregular
Garage Stalls	2
School District	544
Taxes	\$194
Taxes with Assessments	\$194
Tax Year	2026

Additional Features:

Basement: None **Fuel:** Natural Gas **Garage:** 2 **Heat:** Forced Air **Sewer:** City Sewer/Connected **Water:** City Water/Connected **Air Conditioning:** Central Air

Driving Directions:

Head N on Union Ave and then E onto Campus Dr to 1429 Campus Dr.



Listed By:
Keller Williams Realty Professionals

Affinity Real Estate Inc. participates in the Regional Multiple Listing Service of Minnesota, Inc Broker Reciprocity (sm) program, allowing us to display other broker's listings on our website. All properties are subject to prior sale, change or withdrawal.



Call Affinity Real Estate

218-237-3333

info@affinityrealestate.com



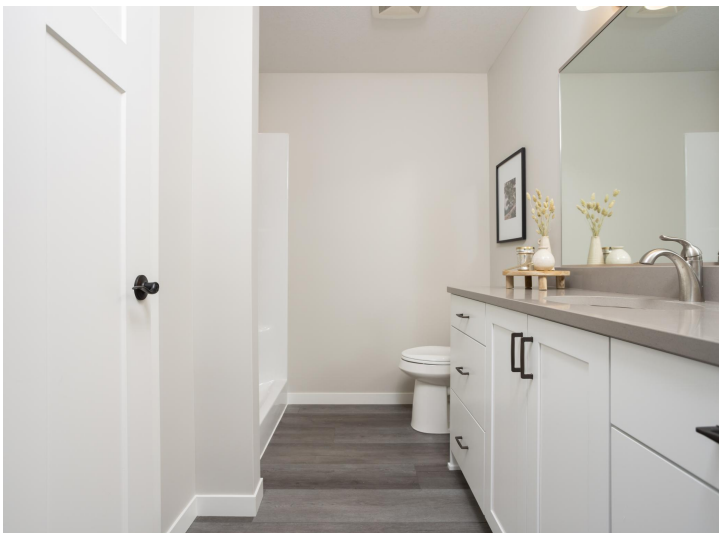
Affinity Real Estate - 600 Park Avenue South - Park Rapids MN 56470



website: www.AffinityRealEstate.com | email: info@affinityrealestate.com | office: 218-237-3333 | fax:218-237-3377

Affinity
REAL ESTATE INC

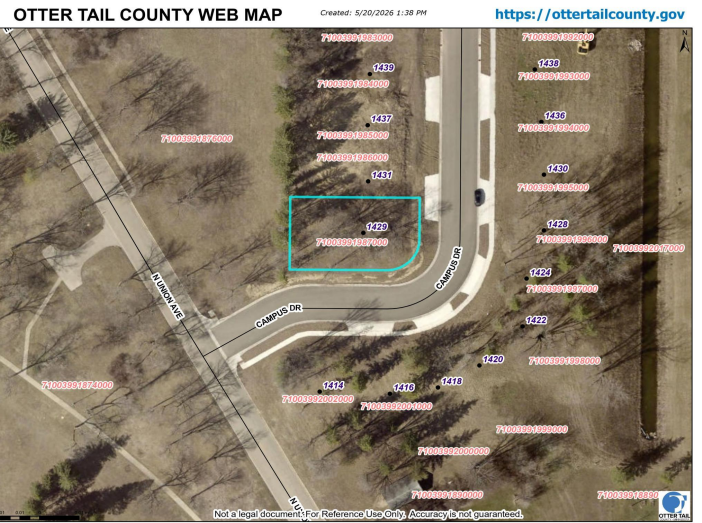
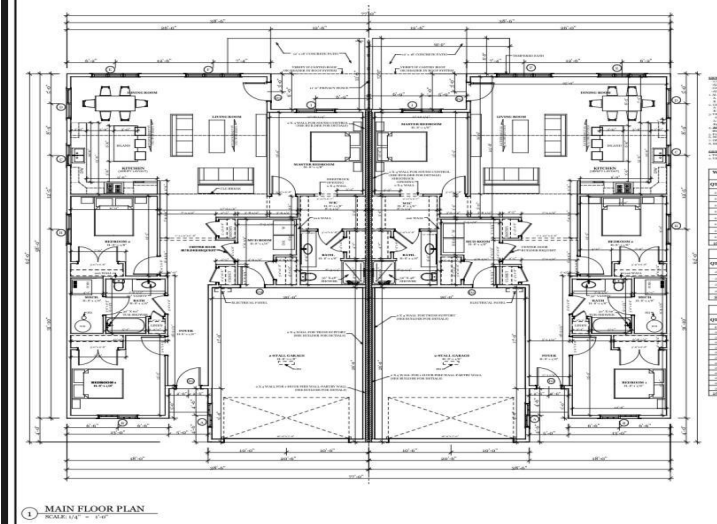
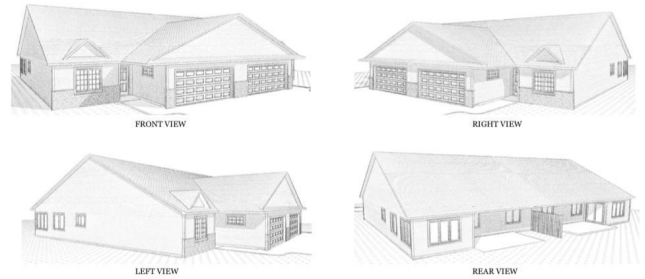
\$364,900
MLS 7079503 Residential
1429 Campus Drive
Fergus Falls MN 56537



website: www.AffinityRealEstate.com | email: info@affinityrealestate.com | office: 218-237-3333 | fax:218-237-3377

Affinity
REAL ESTATE INC

\$364,900
MLS 7079503 Residential
1429 Campus Drive
Fergus Falls MN 56537



website: www.AffinityRealEstate.com | email: info@affinityrealestate.com | office: 218-237-3333 | fax: 218-237-3377



\$364,900
 MLS 7079503 Residential
 1429 Campus Drive
 Fergus Falls MN 56537