



MLS 7079586 Land

\$16,500

0.06 Acres
Raw Land

TBD Necktie Lane
Lake George MN 56458

Status: Active



Description:

50x50 lot located in Lake George. Medium tree coverage, open builder, CIC and covenants located in supplemental documents.

Additional Details:

Lot Acres	0.06
Lot Dimensions	50x50
School District	309
Taxes	\$94
Taxes with Assessments	\$94
Tax Year	2026

Additional Features:

Driving Directions:

From Park Rapids 34/71 head East on 34 to County Rd 4, then East on 71 for 4 miles to Ne Melahn Drive, then South to Necktie Loop, then West to property on the right. Lot #12



Listed By:
Coldwell Banker Crown Realtors

Affinity Real Estate Inc. participates in the Regional Multiple Listing Service of Minnesota, Inc Broker Reciprocity (sm) program, allowing us to display other broker's listings on our website. All properties are subject to prior sale, change or withdrawal.



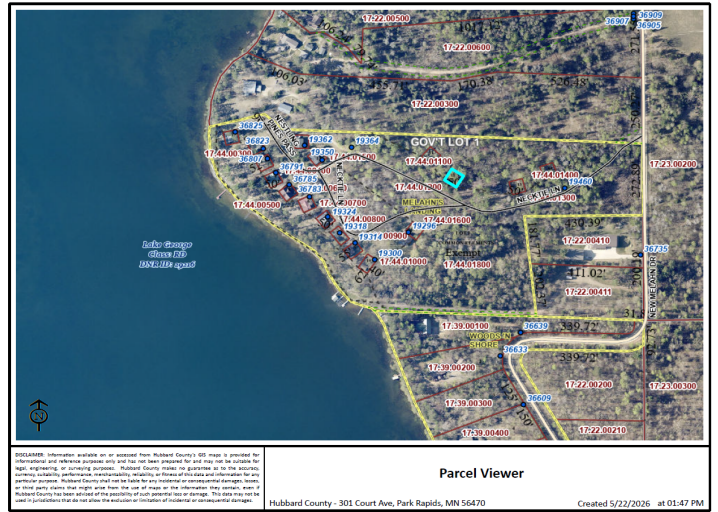
Call Affinity Real Estate

218-237-3333

info@affinityrealestate.com



Affinity Real Estate - 600 Park Avenue South - Park Rapids MN 56470



DISCLAIMER: Information available on or accessed from Hubbard County's GIS map is provided for informational and reference purposes only and has not been prepared for and may not be suitable for legal, engineering, or planning purposes. Hubbard County makes no guarantee as to the accuracy, currency, reliability, performance, availability, or fitness of this data and information for any particular purpose. Hubbard County shall not be liable for any inaccuracy or consequential damages, losses, or other claims arising from any use of this data, or all or part of the information. This disclaimer, even if modified by electronic means, shall constitute the entire agreement between you and Hubbard County for the use of this data and information. You shall not be held liable in any jurisdiction that do not allow the exclusion or limitation of incidental or consequential damages.

Parcel Viewer
 Hubbard County - 301 Court Ave, Park Rapids, MN 56470
 Created 5/22/2026 at 01:47 PM

website: www.AffinityRealEstate.com | email: info@affinityrealestate.com | office: 218-237-3333 | fax:218-237-3377



\$16,500
 MLS 7079586 Land
 TBD Necktie Lane
 Lake George MN 56458