



MLS 7079658 Lake Home

\$699,900

3,474 sq ft
4 bedrooms
4 baths

10660 Waters Edge Drive
Walker MN 56484

Waterfront: Leech

Status: Active

Description:

New construction with view of Leech Lake just 8 miles North of Walker next to the heartland trail. This home has it all with custom finishing, kitchen, cabinets, tile showers, in-floor heat with dual system for main house and garage. This home is move in ready yet enough time to personalized the finishing touches. The main floor bedroom with 1/2 bathroom, great room with gas fireplace, with staircase to 2nd floor, kitchen/dining, quartz countertops, high end kitchen aid appliance, lighting and plumbing fixtures, 3 stall garage has in floor heat, upper family room, main suite bedroom with 2 walk-in closets and large en-suite bath (tub, shower, separate toilet area, vanity area and double sink), 2 bedrooms with walk-in closet and en-suite bath, upper laundry room, protected harbor on Leech Lake with private concrete launch ramp, a slip, large parking area and green areas in shared lake access out lot.

Additional Details:

Year Built	2023
Lot Acres	12327
Lot Dimensions	75.03x151.93x93.2x141
Garage Stalls	3
School District	113
Taxes	\$3,808
Taxes with Assessments	\$3,808
Tax Year	2024

Additional Features:

Basement: None **Fuel:** Electric, Propane **Garage:** 3 **Heat:** Boiler, Forced Air, Fireplace(s), In-Floor Heating **Sewer:** Tank with Drainage Field **Water:** Well **Air Conditioning:** Central Air

Driving Directions:

7 miles North of Walker



Listed By:
Keller Williams Select Realty

Affinity Real Estate Inc. participates in the Regional Multiple Listing Service of Minnesota, Inc Broker Reciprocity (sm) program, allowing us to display other broker's listings on our website. All properties are subject to prior sale, change or withdrawal.



Call Affinity Real Estate

218-237-3333

info@affinityrealestate.com



Affinity Real Estate - 600 Park Avenue South - Park Rapids MN 56470



website: www.AffinityRealEstate.com | email: info@affinityrealestate.com | office: 218-237-3333 | fax:218-237-3377

Affinity
REAL ESTATE INC

\$699,900
MLS 7079658 Lake Home
10660 Waters Edge Drive
Walker MN 56484



website: www.AffinityRealEstate.com | email: info@affinityrealestate.com | office: 218-237-3333 | fax:218-237-3377



\$699,900
MLS 7079658 Lake Home
10660 Waters Edge Drive
Walker MN 56484



website: www.AffinityRealEstate.com | email: info@affinityrealestate.com | office: 218-237-3333 | fax:218-237-3377



\$699,900
MLS 7079658 Lake Home
10660 Waters Edge Drive
Walker MN 56484



website: www.AffinityRealEstate.com | email: info@affinityrealestate.com | office: 218-237-3333 | fax:218-237-3377



\$699,900
MLS 7079658 Lake Home
10660 Waters Edge Drive
Walker MN 56484



website: www.AffinityRealEstate.com | email: info@affinityrealestate.com | office: 218-237-3333 | fax:218-237-3377

Affinity
REAL ESTATE INC

\$699,900
MLS 7079658 Lake Home
10660 Waters Edge Drive
Walker MN 56484



website: www.AffinityRealEstate.com | email: info@affinityrealestate.com | office: 218-237-3333 | fax:218-237-3377



\$699,900
MLS 7079658 Lake Home
10660 Waters Edge Drive
Walker MN 56484



website: www.AffinityRealEstate.com | email: info@affinityrealestate.com | office: 218-237-3333 | fax:218-237-3377



\$699,900
MLS 7079658 Lake Home
10660 Waters Edge Drive
Walker MN 56484



website: www.AffinityRealEstate.com | email: info@affinityrealestate.com | office: 218-237-3333 | fax:218-237-3377



\$699,900
MLS 7079658 Lake Home
10660 Waters Edge Drive
Walker MN 56484



website: www.AffinityRealEstate.com | email: info@affinityrealestate.com | office: 218-237-3333 | fax:218-237-3377



\$699,900
MLS 7079658 Lake Home
10660 Waters Edge Drive
Walker MN 56484



website: www.AffinityRealEstate.com | email: info@affinityrealestate.com | office: 218-237-3333 | fax:218-237-3377

Affinity
REAL ESTATE INC

\$699,900
MLS 7079658 Lake Home
10660 Waters Edge Drive
Walker MN 56484



website: www.AffinityRealEstate.com | email: info@affinityrealestate.com | office: 218-237-3333 | fax: 218-237-3377

Affinity
REAL ESTATE INC

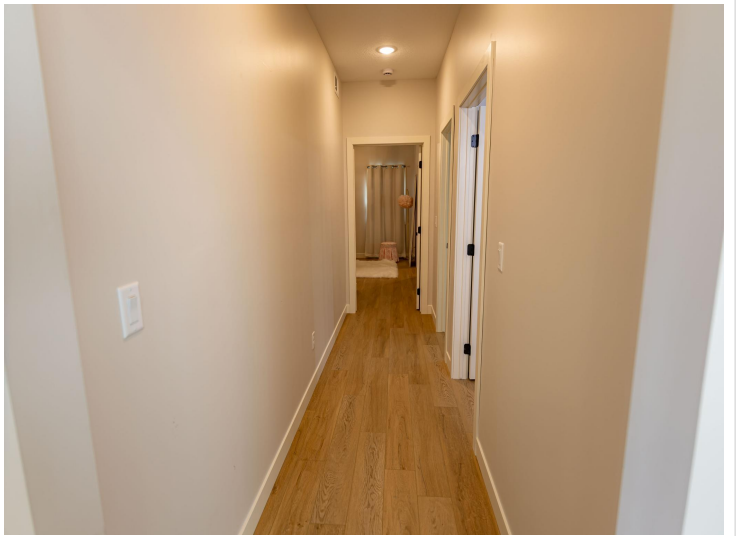
\$699,900
MLS 7079658 Lake Home
10660 Waters Edge Drive
Walker MN 56484



website: www.AffinityRealEstate.com | email: info@affinityrealestate.com | office: 218-237-3333 | fax:218-237-3377



\$699,900
MLS 7079658 Lake Home
10660 Waters Edge Drive
Walker MN 56484



website: www.AffinityRealEstate.com | email: info@affinityrealestate.com | office: 218-237-3333 | fax:218-237-3377



\$699,900
MLS 7079658 Lake Home
10660 Waters Edge Drive
Walker MN 56484