

MLS 7079694 Land

**\$163,000**

33.38 Acres  
Raw Land

880 5th Lane  
Menahga MN 56464

Status: Active

**Description:**

Beautiful 33.38 Acre Wooded Building Site in Menahga, Minnesota! Discover the perfect blend of privacy, natural beauty, and Northwoods character on this spacious wooded acreage located just outside Menahga, MN. Whether you're dreaming of building a year round home, creating a secluded cabin retreat, or securing land for hunting and recreation, this acreage offers the ideal canvas. This location is peaceful and has the seclusion many of us seek in Northern Minnesota.

**Additional Details:**

Lot Acres	33.38
Lot Dimensions	Irregular
School District	821
Taxes	\$1,140
Taxes with Assessments	\$1,140
Tax Year	2026

**Additional Features:**

**Driving Directions:**

From Park Rapids head South on 71 for 11 miles to a right on 1st Street NW and continue to sign on the left after 1 mile.



Listed By:  
Coldwell Banker Crown Realtors

Affinity Real Estate Inc. participates in the Regional Multiple Listing Service of Minnesota, Inc Broker Reciprocity (sm) program, allowing us to display other broker's listings on our website. All properties are subject to prior sale, change or withdrawal.



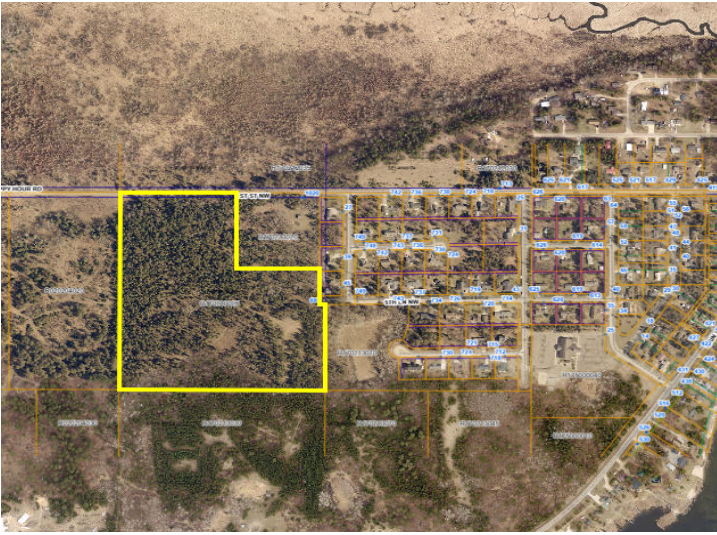
Call Affinity Real Estate

**218-237-3333**

[info@affinityrealestate.com](mailto:info@affinityrealestate.com)



Affinity Real Estate - 600 Park Avenue South - Park Rapids MN 56470



website: [www.AffinityRealEstate.com](http://www.AffinityRealEstate.com) | email: [info@affinityrealestate.com](mailto:info@affinityrealestate.com) | office: 218-237-3333 | fax:218-237-3377



**\$163,000**  
MLS 7079694 Land  
880 5th Lane  
Menahga MN 56464