



MLS 7079766 Lake Land

\$79,900

Description:

Welcome to your piece of paradise. Over four private acres to escape the city and enjoy nature. Great location to build a cabin or bring your rv/camper. Property features a garage with electric and storage shed. Association access to Meadow lake to canoe, kayak or fish.

Additional Details:

Lot Acres	4.38
Lot Dimensions	IRR
School District	2170
Taxes	\$146
Taxes with Assessments	\$212
Tax Year	2025

Additional Features:

Driving Directions:

From MN-210 W: turn right onto MN-64 N, turn right onto 76th St SW, continue onto Kind Richard Ave SW, follow the gravel road to the right, home will be on the left.



Listed By:
eXp Realty

Affinity Real Estate Inc. participates in the Regional Multiple Listing Service of Minnesota, Inc Broker Reciprocity (sm) program, allowing us to display other broker's listings on our website. All properties are subject to prior sale, change or withdrawal.



Call Affinity Real Estate

218-237-3333

info@affinityrealestate.com



Affinity Real Estate - 600 Park Avenue South - Park Rapids MN 56470



website: www.AffinityRealEstate.com | email: info@affinityrealestate.com | office: 218-237-3333 | fax:218-237-3377

Affinity
REAL ESTATE INC

\$79,900
MLS 7079766 Lake Land
5332 Hyland Road
Motley MN 56466



website: www.AffinityRealEstate.com | email: info@affinityrealestate.com | office: 218-237-3333 | fax:218-237-3377



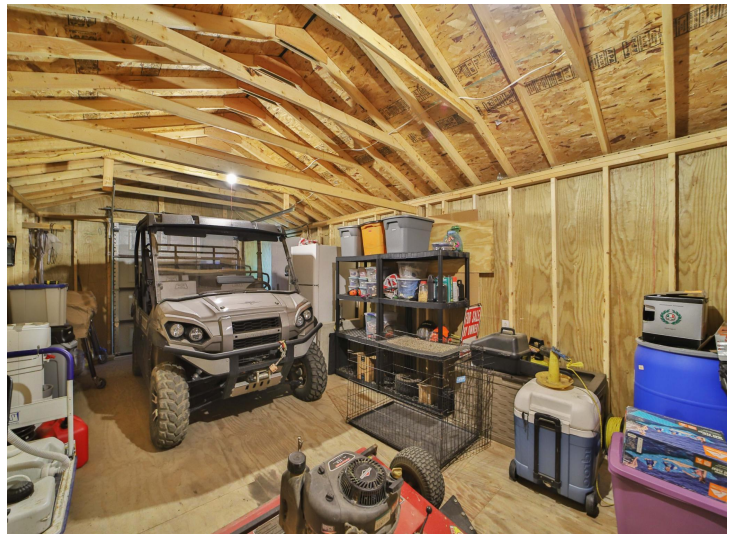
\$79,900
MLS 7079766 Lake Land
5332 Hyland Road
Motley MN 56466



website: www.AffinityRealEstate.com | email: info@affinityrealestate.com | office: 218-237-3333 | fax:218-237-3377



\$79,900
MLS 7079766 Lake Land
5332 Hyland Road
Motley MN 56466



website: www.AffinityRealEstate.com | email: info@affinityrealestate.com | office: 218-237-3333 | fax:218-237-3377



\$79,900
MLS 7079766 Lake Land
5332 Hyland Road
Motley MN 56466