



MLS 7079791 Residential

**\$674,900**

2,740 sq ft  
4 bedrooms  
4 baths

1358 County Road 17  
Pequot Lakes MN 56472

Status: Active

**Description:**

Nestled on 20 beautiful acres just outside of Pequot Lakes, this exceptional 4-bedroom PLUS a flex/bonus room, 4-bathroom home offers privacy, space, and endless possibilities. Set back from the road on a long private driveway, the property welcomes you with beautifully maintained grounds and a peaceful country setting. Inside, you'll find a bright open floor plan, vaulted ceilings, abundant natural light, and a stunning stone fireplace that serves as the heart of the home. The spacious lower level is designed for family gatherings and entertaining, featuring a large family room, wet bar, sauna, and hot tub area. Enjoy outdoor living from the expansive front deck or the covered rear patio, perfect for relaxing and taking in the views of the spacious front and back yard all nestled among mature trees for the utmost privacy. A heated attached two-stall garage and an enormous pole building with two insulated sections provide ample room for vehicles, equipment, hobbies, or a workshop. With generous living spaces, a versatile bonus/flex room, and room to roam, this property combines the best of country living with convenient access to town. A rare opportunity to own a private retreat in one of the area's most sought-after locations. Recent improvements include a new furnace and A/C system offering enhanced comfort, efficiency and value for years to come.

**Additional Details:**

|                        |          |
|------------------------|----------|
| Year Built             | 1995     |
| Lot Acres              | 20       |
| Lot Dimensions         | 668x1330 |
| Garage Stalls          | 5        |
| School District        | 186      |
| Taxes                  | \$2,902  |
| Taxes with Assessments | \$2,988  |
| Tax Year               | 2026     |

**Additional Features:**

**Basement:** Block, Egress Window(s), Finished, Full, Tile Shower **Fuel:** Propane, Wood **Garage:** 5 **Heat:** Forced Air, Fireplace(s) **Sewer:** Private Sewer, Tank with Drainage Field **Water:** Drilled, Private **Air Conditioning:** Central Air

**Driving Directions:**

From stonlight in Pequot Lake go North on Patriot Ave to left on CR



Listed By:  
Realty ONE Group Choice

Affinity Real Estate Inc. participates in the Regional Multiple Listing Service of Minnesota, Inc Broker Reciprocity (sm) program, allowing us to display other broker's listings on our website. All properties are subject to prior sale, change or withdrawal.



Call Affinity Real Estate

**218-237-3333**

[info@affinityrealestate.com](mailto:info@affinityrealestate.com)



Affinity Real Estate - 600 Park Avenue South - Park Rapids MN 56470



website: [www.AffinityRealEstate.com](http://www.AffinityRealEstate.com) | email: [info@affinityrealestate.com](mailto:info@affinityrealestate.com) | office: 218-237-3333 | fax:218-237-3377

**Affinity**  
REAL ESTATE INC

**\$674,900**  
MLS 7079791 Residential  
1358 County Road 17  
Pequot Lakes MN 56472

website: [www.AffinityRealEstate.com](http://www.AffinityRealEstate.com) | email: [info@affinityrealestate.com](mailto:info@affinityrealestate.com) | office: 218-237-3333 | fax:218-237-3377



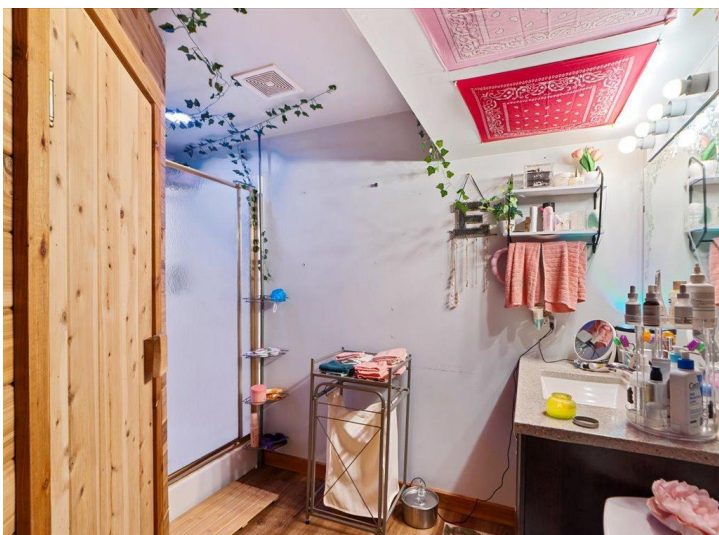
**\$674,900**  
MLS 7079791 Residential  
1358 County Road 17  
Pequot Lakes MN 56472



website: [www.AffinityRealEstate.com](http://www.AffinityRealEstate.com) | email: [info@affinityrealestate.com](mailto:info@affinityrealestate.com) | office: 218-237-3333 | fax:218-237-3377



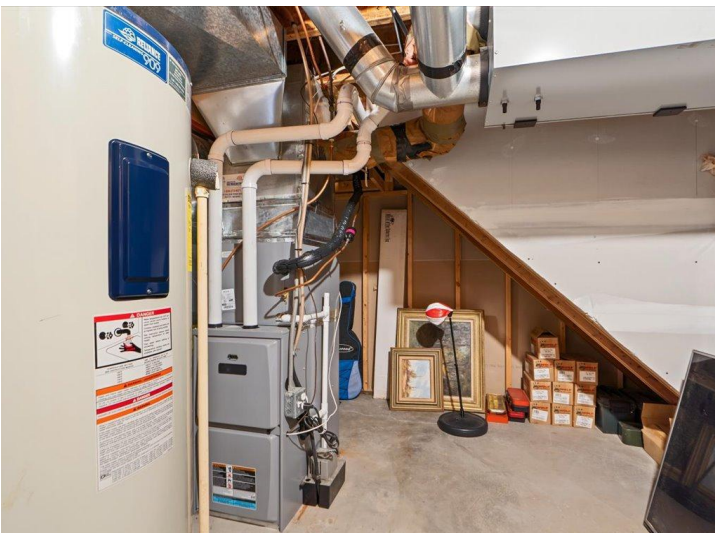
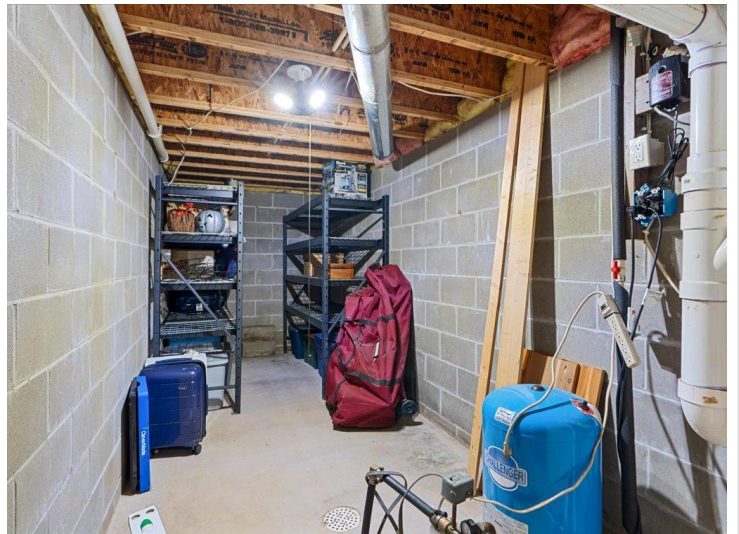
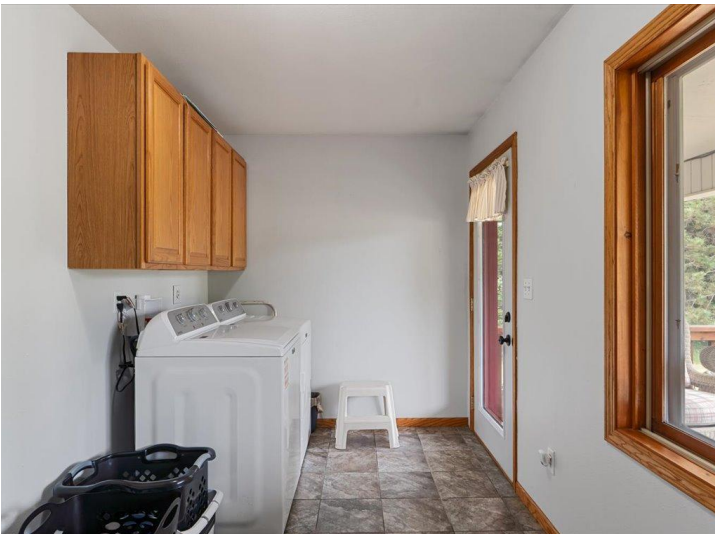
**\$674,900**  
MLS 7079791 Residential  
1358 County Road 17  
Pequot Lakes MN 56472



website: [www.AffinityRealEstate.com](http://www.AffinityRealEstate.com) | email: [info@affinityrealestate.com](mailto:info@affinityrealestate.com) | office: 218-237-3333 | fax:218-237-3377

**Affinity**  
REAL ESTATE INC

**\$674,900**  
MLS 7079791 Residential  
1358 County Road 17  
Pequot Lakes MN 56472



website: [www.AffinityRealEstate.com](http://www.AffinityRealEstate.com) | email: [info@affinityrealestate.com](mailto:info@affinityrealestate.com) | office: 218-237-3333 | fax:218-237-3377

**Affinity**  
REAL ESTATE INC

**\$674,900**  
MLS 7079791 Residential  
1358 County Road 17  
Pequot Lakes MN 56472



website: [www.AffinityRealEstate.com](http://www.AffinityRealEstate.com) | email: [info@affinityrealestate.com](mailto:info@affinityrealestate.com) | office: 218-237-3333 | fax:218-237-3377



**\$674,900**  
MLS 7079791 Residential  
1358 County Road 17  
Pequot Lakes MN 56472

website: [www.AffinityRealEstate.com](http://www.AffinityRealEstate.com) | email: [info@affinityrealestate.com](mailto:info@affinityrealestate.com) | office: 218-237-3333 | fax:218-237-3377



**\$674,900**  
MLS 7079791 Residential  
1358 County Road 17  
Pequot Lakes MN 56472

website: [www.AffinityRealEstate.com](http://www.AffinityRealEstate.com) | email: [info@affinityrealestate.com](mailto:info@affinityrealestate.com) | office: 218-237-3333 | fax:218-237-3377



**\$674,900**  
MLS 7079791 Residential  
1358 County Road 17  
Pequot Lakes MN 56472



website: [www.AffinityRealEstate.com](http://www.AffinityRealEstate.com) | email: [info@affinityrealestate.com](mailto:info@affinityrealestate.com) | office: 218-237-3333 | fax:218-237-3377



**\$674,900**  
MLS 7079791 Residential  
1358 County Road 17  
Pequot Lakes MN 56472



website: [www.AffinityRealEstate.com](http://www.AffinityRealEstate.com) | email: [info@affinityrealestate.com](mailto:info@affinityrealestate.com) | office: 218-237-3333 | fax:218-237-3377

**Affinity**  
REAL ESTATE INC

**\$674,900**  
MLS 7079791 Residential  
1358 County Road 17  
Pequot Lakes MN 56472