



MLS 7080010 Lake Home

\$375,000

2,236 sq ft
3 bedrooms
2 baths

31759 County 30
Laporte MN 56461

Waterfront: Horseshoe

Status: Active

Description:

Tucked deep in the pines on nearly 10 private acres, this private Horseshoe Lake retreat captures everything people love about true Northwoods living. With 210 feet of shoreline and a beautiful mix of log and frame construction, this 3 bedroom, 2 bath home offers warmth, character, and peaceful surroundings in every direction.

Inside, you'll find a welcoming open feel highlighted by rich wood finishes, in-floor heat, a cozy fireplace, and timeless rustic charm blended with modern comfort. The indoor sauna creates the perfect place to relax after a day on the lake or trails, while the classic clawfoot tub adds a touch of vintage character. A large screened porch provides an ideal space to enjoy quiet mornings, evening sunsets, and the sights and sounds of nature without ever leaving home.

Whether you're looking for a year-round residence, weekend getaway, or private Up North escape, this property delivers outstanding privacy, beautiful wooded scenery, and direct access to fishing, kayaking, and outdoor recreation. Conveniently located between Laporte and Walker and just minutes from Leech Lake, this is the kind of property that rarely comes available.


Additional Details:

Year Built	1980
Lot Acres	9.89
Lot Dimensions	320x915x761x210x716x89
Garage Stalls	2
School District	306
Taxes	\$2,218
Taxes with Assessments	\$2,218
Tax Year	2026

Additional Features:

Basement: Block, Finished **Fuel:** Electric, Propane **Garage:** 2 **Heat:** Baseboard, Forced Air, Fireplace(s) **Sewer:** Private Sewer, Septic System Compliant - Yes **Water:** 4-Inch Submersible, Well **Air Conditioning:** None

Driving Directions:

Listed by  200 to County Road 30. Head west on County Road 30. Continue for approximately 1.5-2 miles to 31759
Real Broker, LLC

Affinity Real Estate Inc. participates in the Regional Multiple Listing Service of Minnesota, Inc Broker Reciprocity (sm) program, allowing us to display other broker's listings on our website. All properties are subject to prior sale, change or withdrawal.



Call Affinity Real Estate

218-237-3333

info@affinityrealestate.com



Affinity Real Estate - 600 Park Avenue South - Park Rapids MN 56470



website: www.AffinityRealEstate.com | email: info@affinityrealestate.com | office: 218-237-3333 | fax:218-237-3377

Affinity
REAL ESTATE INC

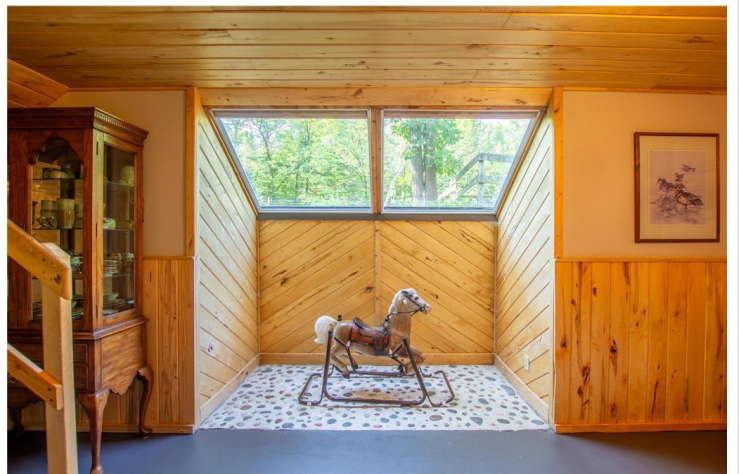
\$375,000
MLS 7080010 Lake Home
31759 County 30
Laporte MN 56461



website: www.AffinityRealEstate.com | email: info@affinityrealestate.com | office: 218-237-3333 | fax:218-237-3377

Affinity
REAL ESTATE INC

\$375,000
MLS 7080010 Lake Home
31759 County 30
Laporte MN 56461



website: www.AffinityRealEstate.com | email: info@affinityrealestate.com | office: 218-237-3333 | fax:218-237-3377

Affinity
REAL ESTATE INC

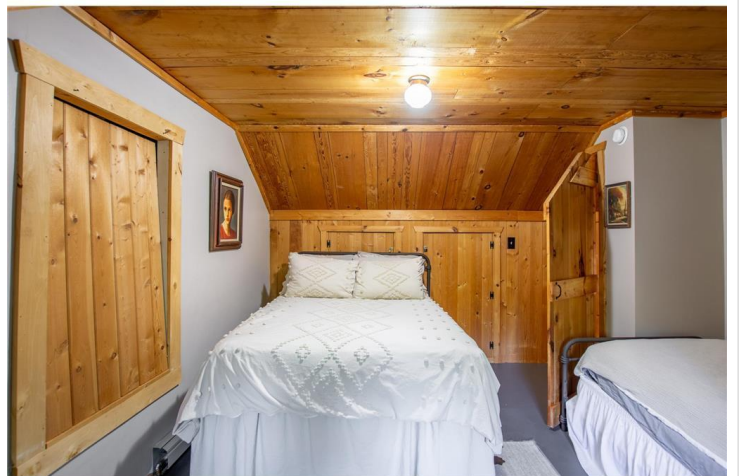
\$375,000
MLS 7080010 Lake Home
31759 County 30
Laporte MN 56461



website: www.AffinityRealEstate.com | email: info@affinityrealestate.com | office: 218-237-3333 | fax:218-237-3377

Affinity
REAL ESTATE INC

\$375,000
MLS 7080010 Lake Home
31759 County 30
Laporte MN 56461



website: www.AffinityRealEstate.com | email: info@affinityrealestate.com | office: 218-237-3333 | fax:218-237-3377

Affinity
REAL ESTATE INC

\$375,000
MLS 7080010 Lake Home
31759 County 30
Laporte MN 56461



website: www.AffinityRealEstate.com | email: info@affinityrealestate.com | office: 218-237-3333 | fax:218-237-3377

Affinity
REAL ESTATE INC

\$375,000
MLS 7080010 Lake Home
31759 County 30
Laporte MN 56461



website: www.AffinityRealEstate.com | email: info@affinityrealestate.com | office: 218-237-3333 | fax:218-237-3377



\$375,000
MLS 7080010 Lake Home
31759 County 30
Laporte MN 56461



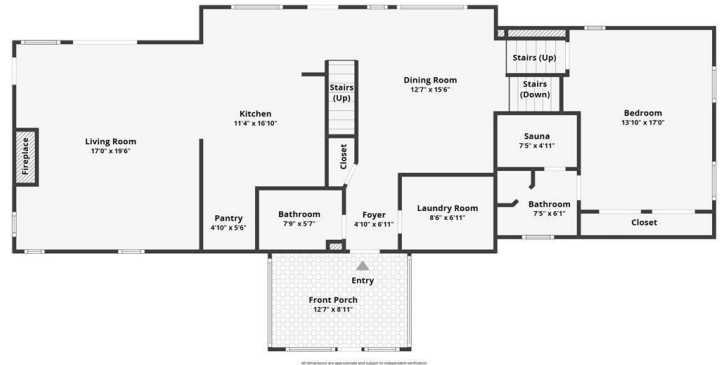
website: www.AffinityRealEstate.com | email: info@affinityrealestate.com | office: 218-237-3333 | fax:218-237-3377



\$375,000
MLS 7080010 Lake Home
31759 County 30
Laporte MN 56461



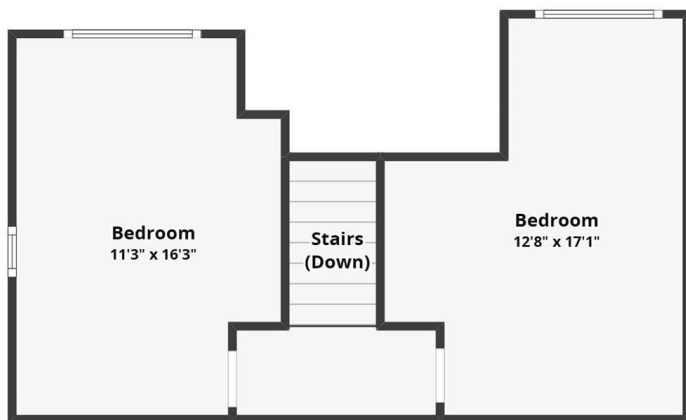
All dimensions are approximate and subject to independent verification.



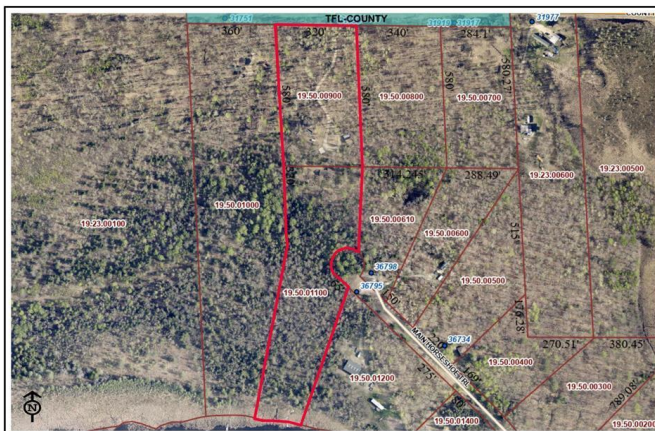
website: www.AffinityRealEstate.com | email: info@affinityrealestate.com | office: 218-237-3333 | fax: 218-237-3377



\$375,000
 MLS 7080010 Lake Home
 31759 County 30
 Laporte MN 56461



All dimensions are approximate and subject to independent verification

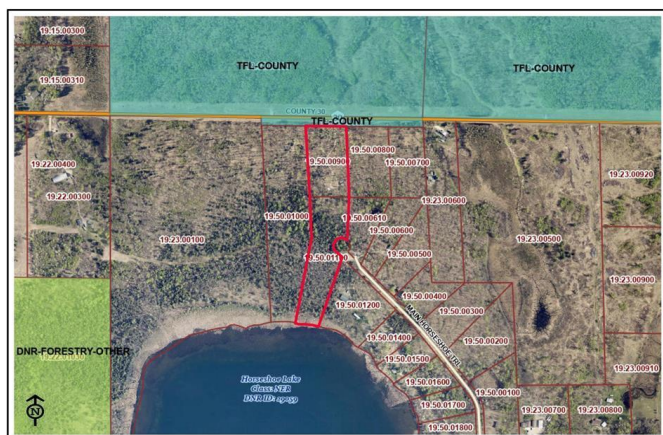


31759 County 30, Laporte

Hubbard County - 301 Court Ave, Park Rapids, MN 56470

Created 7/9/2025 at 10:44 AM

DISCLAIMER: Information available on or derived from Hubbard County GIS maps is provided for informational and reference purposes only and has not been prepared for and may not be suitable for land engineering, or zoning purposes. Hubbard County makes no guarantee as to the accuracy, currency, suitability, performance, merchantability, reliability, or fitness of this data and information for any particular purpose. Hubbard County will not be liable for any technical or consequential damage, injury, or loss of any kind arising from the use of this data or information. This disclaimer, even if it is a part of any contract, shall not be construed to limit the liability of Hubbard County. Hubbard County has been advised of the possibility of such potential loss or damage. This data may not be used in a jurisdiction that does not allow the execution or inclusion of disclaimer or consequential damage.

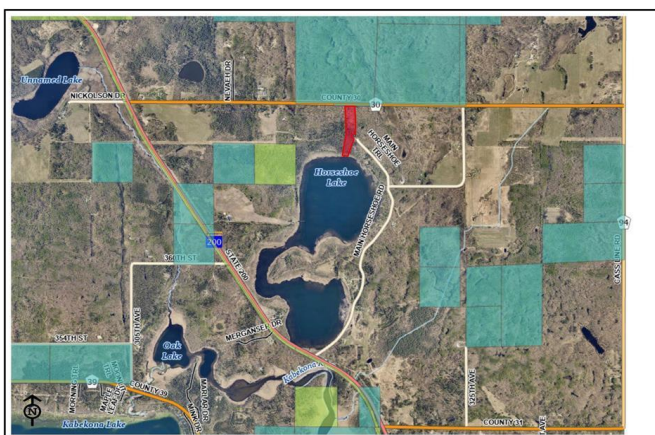


31759 County 30, Laporte

Hubbard County - 301 Court Ave, Park Rapids, MN 56470

Created 7/9/2025 at 10:42 AM

DISCLAIMER: Information available on or derived from Hubbard County GIS maps is provided for informational and reference purposes only and has not been prepared for and may not be suitable for land engineering, or zoning purposes. Hubbard County makes no guarantee as to the accuracy, currency, suitability, performance, merchantability, reliability, or fitness of this data and information for any particular purpose. Hubbard County will not be liable for any technical or consequential damage, injury, or loss of any kind arising from the use of this data or information. This disclaimer, even if it is a part of any contract, shall not be construed to limit the liability of Hubbard County. Hubbard County has been advised of the possibility of such potential loss or damage. This data may not be used in a jurisdiction that does not allow the execution or inclusion of disclaimer or consequential damage.



31759 County 30, Laporte

Hubbard County - 301 Court Ave, Park Rapids, MN 56470

Created 7/9/2025 at 10:48 AM

DISCLAIMER: Information available on or derived from Hubbard County GIS maps is provided for informational and reference purposes only and has not been prepared for and may not be suitable for land engineering, or zoning purposes. Hubbard County makes no guarantee as to the accuracy, currency, suitability, performance, merchantability, reliability, or fitness of this data and information for any particular purpose. Hubbard County will not be liable for any technical or consequential damage, injury, or loss of any kind arising from the use of this data or information. This disclaimer, even if it is a part of any contract, shall not be construed to limit the liability of Hubbard County. Hubbard County has been advised of the possibility of such potential loss or damage. This data may not be used in a jurisdiction that does not allow the execution or inclusion of disclaimer or consequential damage.

website: www.AffinityRealEstate.com | email: info@affinityrealestate.com | office: 218-237-3333 | fax: 218-237-3377



\$375,000
 MLS 7080010 Lake Home
 31759 County 30
 Laporte MN 56461