



MLS 7080106 Land

\$199,000

20 Acres
Raw Land

TBD Jeff Lake Road
Richville MN 56576

Status: Active

Description:

Prime Hunting Land with Buildable Potential Near Ottertail City

This beautiful property offers a unique mix of high and low land, ideal for outdoor enthusiasts and hunters alike. Mature trees and well-maintained trails wind throughout the acreage, creating a peaceful and scenic setting. A proven deer hunting hotspot, the existing elevated stand overlooks a swamp area where many successful harvests have taken place.

An open clearing provides an excellent opportunity to establish a food plot, enhancing the property's appeal as a wildlife haven. Whether you're looking for a recreational getaway or the perfect spot to build your dream home, this land delivers.

Enjoy the quiet sounds of the countryside while being just 5 miles from the amenities of Ottertail City. Don't miss this rare opportunity to own versatile land in a highly desirable location!

Additional Details:

Lot Acres	20
Lot Dimensions	1330x670 feet
School District	549
Taxes	\$444
Taxes with Assessments	\$444
Tax Year	2025

Additional Features:

Driving Directions:

From Richville south on Jeff Lake road approximately 2.5 miles. Property on East side of road.



Listed By:
Boll Realty

Affinity Real Estate Inc. participates in the Regional Multiple Listing Service of Minnesota, Inc Broker Reciprocity (sm) program, allowing us to display other broker's listings on our website. All properties are subject to prior sale, change or withdrawal.



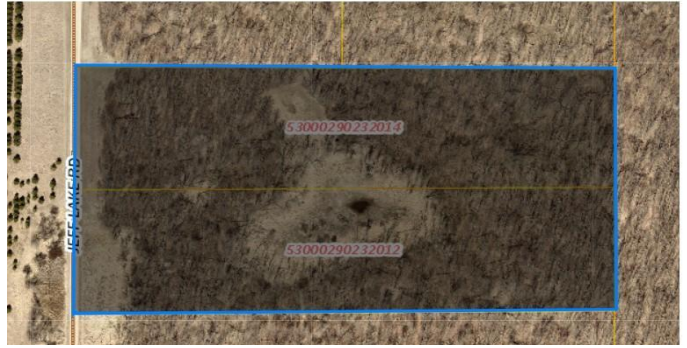
Call Affinity Real Estate

218-237-3333

info@affinityrealestate.com



Affinity Real Estate - 600 Park Avenue South - Park Rapids MN 56470



website: www.AffinityRealEstate.com | email: info@affinityrealestate.com | office: 218-237-3333 | fax:218-237-3377



\$199,000
MLS 7080106 Land
TBD Jeff Lake Road
Richville MN 56576



website: www.AffinityRealEstate.com | email: info@affinityrealestate.com | office: 218-237-3333 | fax:218-237-3377



\$199,000
MLS 7080106 Land
TBD Jeff Lake Road
Richville MN 56576



website: www.AffinityRealEstate.com | email: info@affinityrealestate.com | office: 218-237-3333 | fax:218-237-3377



\$199,000
MLS 7080106 Land
TBD Jeff Lake Road
Richville MN 56576