



MLS 7080121 Residential

\$329,900

1,680 sq ft
3 bedrooms
2 baths

28671 450th Street
Laporte MN 56461

Status: Active

Description:

Escape to country living with this beautifully maintained 3-bedroom, 2-bath home nestled on 5 scenic acres near bike and snowmobile trails. Built in 2009, this inviting property offers the perfect blend of comfort, recreation, and functionality. Inside, you'll find a warm and welcoming living space featuring a cozy wood stove fireplace — perfect for Minnesota winters. Outside, the property truly shines with a newer heated and insulated detached shop/garage, ideal for hobbies, storage, or workspace needs. An additional pole shed offers even more room for recreational equipment, tools, and outdoor toys.

Enjoy peaceful country views, abundant wildlife, and easy access to year-round outdoor adventures right from your doorstep. Whether you're looking for a full-time residence, weekend getaway, or recreational retreat, this property has it all.

Additional Details:

Year Built	2009
Lot Acres	5
Lot Dimensions	985x700x700
Garage Stalls	4
School District	31
Taxes	\$2,172
Taxes with Assessments	\$2,172
Tax Year	2026

Additional Features:

Basement: None **Fuel:** Electric, Propane, Wood **Garage:** 4 **Heat:** Forced Air, Fireplace(s), Hot Water, In-Floor Heating **Sewer:** Private Sewer **Water:** Private **Air Conditioning:** Central Air

Driving Directions:

Hwy 71 South to east on County Rd 16 for 4 miles. North on 275th Avenue and stay to right and continue onto 450th St to property on the right.



Listed By:
Real Broker, LLC

Affinity Real Estate Inc. participates in the Regional Multiple Listing Service of Minnesota, Inc Broker Reciprocity (sm) program, allowing us to display other broker's listings on our website. All properties are subject to prior sale, change or withdrawal.



Call Affinity Real Estate

218-237-3333

info@affinityrealestate.com



Affinity Real Estate - 600 Park Avenue South - Park Rapids MN 56470



website: www.AffinityRealEstate.com | email: info@affinityrealestate.com | office: 218-237-3333 | fax: 218-237-3377

Affinity
REAL ESTATE INC

\$329,900
MLS 7080121 Residential
28671 450th Street
Laporte MN 56461



website: www.AffinityRealEstate.com | email: info@affinityrealestate.com | office: 218-237-3333 | fax: 218-237-3377

Affinity
REAL ESTATE INC

\$329,900
MLS 7080121 Residential
28671 450th Street
Laporte MN 56461



website: www.AffinityRealEstate.com | email: info@affinityrealestate.com | office: 218-237-3333 | fax:218-237-3377

Affinity
REAL ESTATE INC

\$329,900
MLS 7080121 Residential
28671 450th Street
Laporte MN 56461



website: www.AffinityRealEstate.com | email: info@affinityrealestate.com | office: 218-237-3333 | fax:218-237-3377



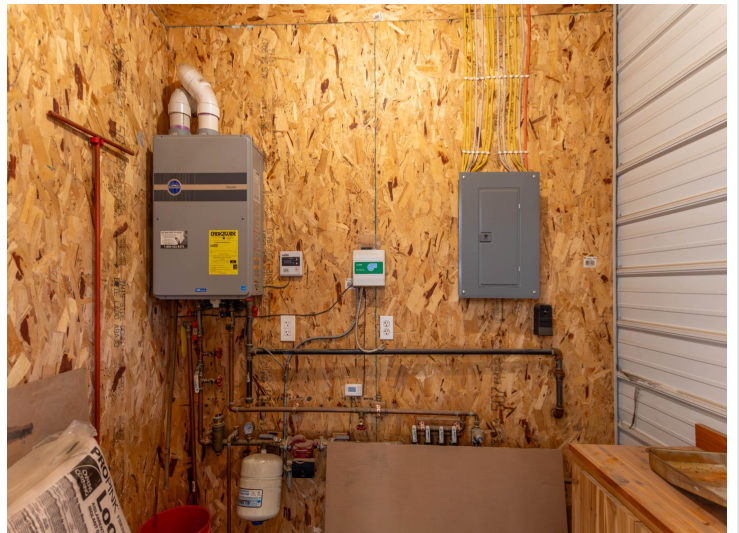
\$329,900
MLS 7080121 Residential
28671 450th Street
Laporte MN 56461



website: www.AffinityRealEstate.com | email: info@affinityrealestate.com | office: 218-237-3333 | fax: 218-237-3377

Affinity
REAL ESTATE INC

\$329,900
MLS 7080121 Residential
28671 450th Street
Laporte MN 56461



website: www.AffinityRealEstate.com | email: info@affinityrealestate.com | office: 218-237-3333 | fax: 218-237-3377

Affinity
REAL ESTATE INC

\$329,900
MLS 7080121 Residential
28671 450th Street
Laporte MN 56461