



MLS 7080152 Residential

\$749,900

2,825 sq ft
4 bedrooms
3 baths

10745 Birch Trail
Brainerd MN 56401

Status: Coming Soon

Description:

Welcome to country living at its finest! Nestled on 40 acres of high, wooded and pasture land near Upper South Long Lake, this spacious 4-bedroom + office home offers room to live, work, and play. The thoughtfully designed upper level features all 4 bedrooms, including a spacious primary suite with ensuite bath, a full guest bath, and convenient upper-level laundry room. The main level offers a functional layout with an office, well-appointed kitchen, sitting room, and comfortable living room. The full unfinished basement offers endless potential, features in-floor heat, and includes convenient access from both the home and the fully insulated 3-stall attached garage. Set up for horses, the property offers a blend of pasture and wooded acreage, along with a pole shed featuring a finished workshop ideal for hobbies, projects, or equipment. A rare opportunity to own acreage, versatility, and country charm in one exceptional property!

Additional Details:

Year Built	2000
Lot Acres	40.03
Lot Dimensions	1310x1310
Garage Stalls	6
School District	181
Taxes	\$1,931
Taxes with Assessments	\$1,956
Tax Year	2025

Additional Features:

Fuel: Electric, Propane **Heat:** Fireplace(s), Geothermal, In-Floor Heating

Driving Directions:

from HWY 18 headed east, turn right on CTY RD 23, then turn left on CTY RD 24, turn right onto Leisure Ln, turn left onto crust rd, turn right onto birch trl the property will be on the right. Make sure to veer right



Listed By:
LPT Realty, LLC.

Affinity Real Estate Inc. participates in the Regional Multiple Listing Service of Minnesota, Inc Broker Reciprocity (sm) program, allowing us to display other broker's listings on our website. All properties are subject to prior sale, change or withdrawal.



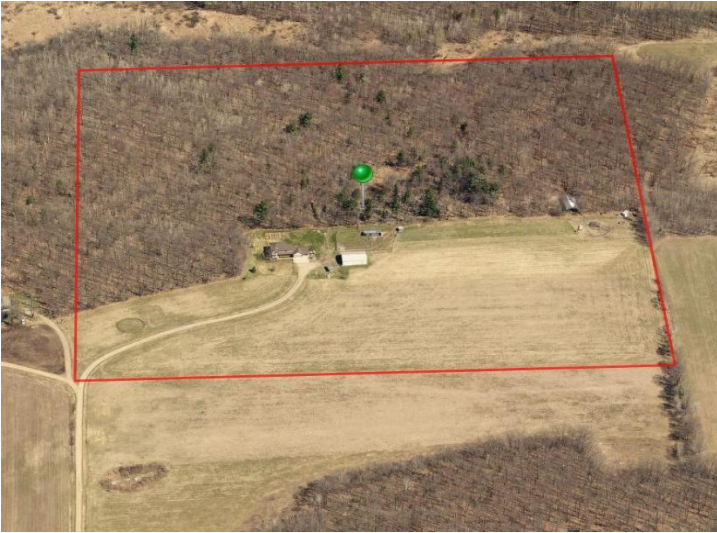
Call Affinity Real Estate

218-237-3333

info@affinityrealestate.com



Affinity Real Estate - 600 Park Avenue South - Park Rapids MN 56470



website: www.AffinityRealEstate.com | email: info@affinityrealestate.com | office: 218-237-3333 | fax: 218-237-3377

Affinity
REAL ESTATE INC

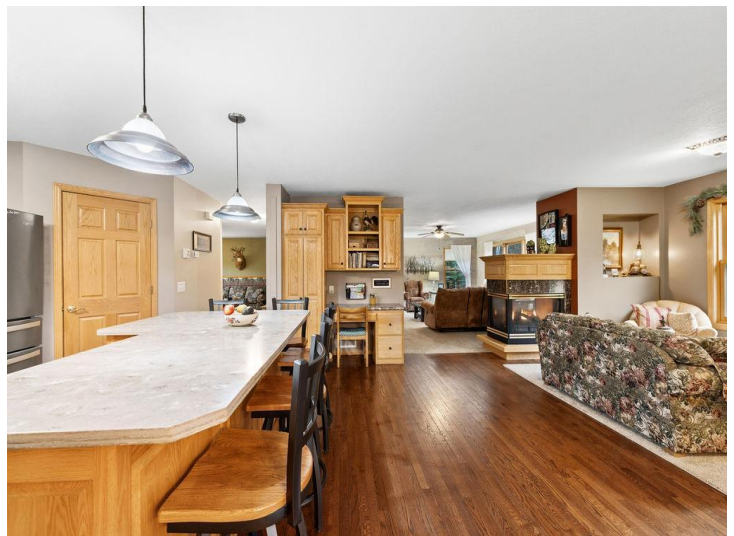
\$749,900
MLS 7080152 Residential
10745 Birch Trail
Brainerd MN 56401



website: www.AffinityRealEstate.com | email: info@affinityrealestate.com | office: 218-237-3333 | fax: 218-237-3377

Affinity
REAL ESTATE INC

\$749,900
MLS 7080152 Residential
10745 Birch Trail
Brainerd MN 56401



website: www.AffinityRealEstate.com | email: info@affinityrealestate.com | office: 218-237-3333 | fax: 218-237-3377

Affinity
REAL ESTATE INC

\$749,900
MLS 7080152 Residential
10745 Birch Trail
Brainerd MN 56401



website: www.AffinityRealEstate.com | email: info@affinityrealestate.com | office: 218-237-3333 | fax:218-237-3377

Affinity
REAL ESTATE INC

\$749,900
MLS 7080152 Residential
10745 Birch Trail
Brainerd MN 56401



website: www.AffinityRealEstate.com | email: info@affinityrealestate.com | office: 218-237-3333 | fax:218-237-3377

Affinity
REAL ESTATE INC

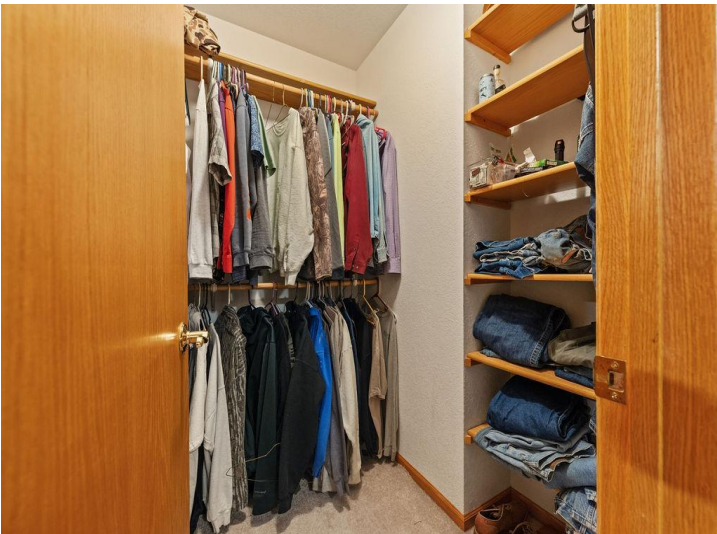
\$749,900
MLS 7080152 Residential
10745 Birch Trail
Brainerd MN 56401



website: www.AffinityRealEstate.com | email: info@affinityrealestate.com | office: 218-237-3333 | fax:218-237-3377

Affinity
REAL ESTATE INC

\$749,900
MLS 7080152 Residential
10745 Birch Trail
Brainerd MN 56401



website: www.AffinityRealEstate.com | email: info@affinityrealestate.com | office: 218-237-3333 | fax:218-237-3377

Affinity
REAL ESTATE INC

\$749,900
MLS 7080152 Residential
10745 Birch Trail
Brainerd MN 56401



website: www.AffinityRealEstate.com | email: info@affinityrealestate.com | office: 218-237-3333 | fax:218-237-3377



\$749,900
MLS 7080152 Residential
10745 Birch Trail
Brainerd MN 56401



website: www.AffinityRealEstate.com | email: info@affinityrealestate.com | office: 218-237-3333 | fax:218-237-3377

Affinity
REAL ESTATE INC

\$749,900
MLS 7080152 Residential
10745 Birch Trail
Brainerd MN 56401



website: www.AffinityRealEstate.com | email: info@affinityrealestate.com | office: 218-237-3333 | fax:218-237-3377



\$749,900
MLS 7080152 Residential
10745 Birch Trail
Brainerd MN 56401



website: www.AffinityRealEstate.com | email: info@affinityrealestate.com | office: 218-237-3333 | fax:218-237-3377

Affinity
REAL ESTATE INC

\$749,900
MLS 7080152 Residential
10745 Birch Trail
Brainerd MN 56401



website: www.AffinityRealEstate.com | email: info@affinityrealestate.com | office: 218-237-3333 | fax:218-237-3377

Affinity
REAL ESTATE INC

\$749,900
MLS 7080152 Residential
10745 Birch Trail
Brainerd MN 56401



website: www.AffinityRealEstate.com | email: info@affinityrealestate.com | office: 218-237-3333 | fax:218-237-3377



\$749,900
MLS 7080152 Residential
10745 Birch Trail
Brainerd MN 56401



website: www.AffinityRealEstate.com | email: info@affinityrealestate.com | office: 218-237-3333 | fax:218-237-3377

Affinity
REAL ESTATE INC

\$749,900
MLS 7080152 Residential
10745 Birch Trail
Brainerd MN 56401



website: www.AffinityRealEstate.com | email: info@affinityrealestate.com | office: 218-237-3333 | fax:218-237-3377



\$749,900
MLS 7080152 Residential
10745 Birch Trail
Brainerd MN 56401