



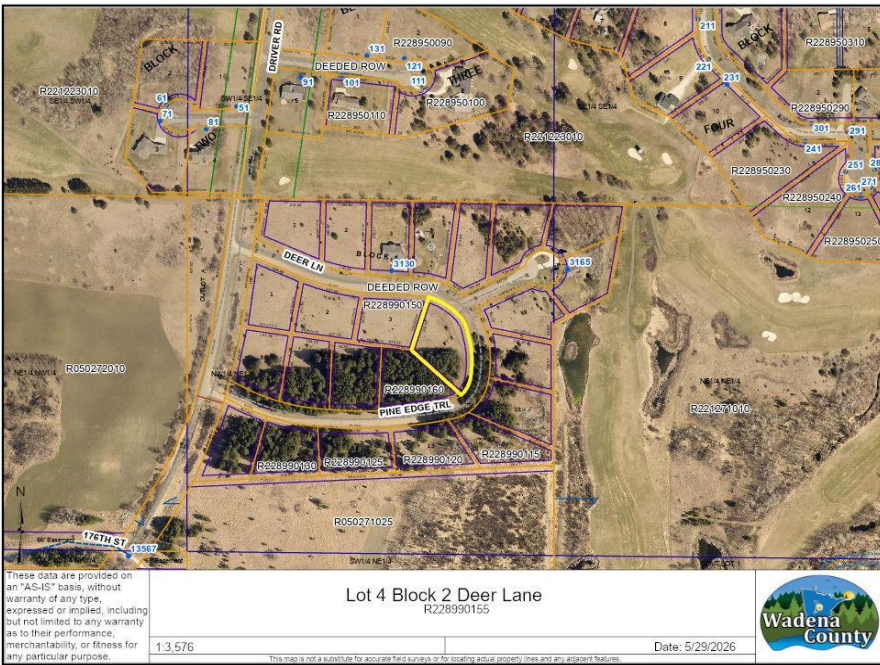
MLS 7080243 Land

**\$26,500**

1.12 Acres  
Raw Land

Lot 4 Block 2 Deer Lane  
Wadena MN 56482

Status: Active



These data are provided on an "AS-IS" basis, without warranty of any type, expressed or implied, including but not limited to any warranty as to their performance, merchantability, or fitness for any particular purpose.

Lot 4 Block 2 Deer Lane  
R228950155

1.3.576

Date: 5/29/2026



**Description:**

Nice 1 acre level lot ready for your new home! Great location, close to Leaf River Trail and Whitetail Run Golf Course ~ which was voted the best public course in Minnesota! Build to suit options and more lots available.

**Additional Details:**

Lot Acres	1.12
Lot Dimensions	irregular
School District	2155
Taxes	\$320
Taxes with Assessments	\$320
Tax Year	2026

**Additional Features:**

**Driving Directions:**

From Wadena, go North on #71, to right on Leaf River Road, to right on Driver Road, to left on Deer Lane to lot on the right. Lot 4 Block 2.



Listed By:  
Edina Realty, Inc.

Affinity Real Estate Inc. participates in the Regional Multiple Listing Service of Minnesota, Inc Broker Reciprocity (sm) program, allowing us to display other broker's listings on our website. All properties are subject to prior sale, change or withdrawal.



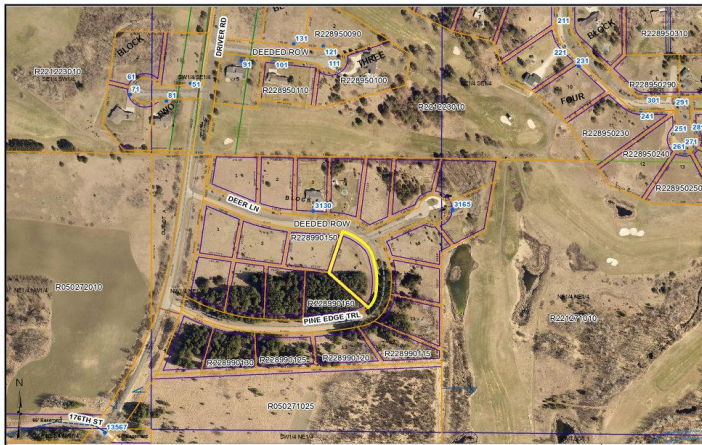
Call Affinity Real Estate

**218-237-3333**

[info@affinityrealestate.com](mailto:info@affinityrealestate.com)



Affinity Real Estate - 600 Park Avenue South - Park Rapids MN 56470



These data are provided on an "AS-IS" basis, without warranty of any type, including but not limited to any warranty as to their performance, merchantability, or fitness for any particular purpose.

1-3-576

Wadena County

Date: 5/29/2026



website: [www.AffinityRealEstate.com](http://www.AffinityRealEstate.com) | email: [info@affinityrealestate.com](mailto:info@affinityrealestate.com) | office: 218-237-3333 | fax:218-237-3377



**\$26,500**  
 MLS 7080243 Land  
 Lot 4 Block 2 Deer Lane  
 Wadena MN 56482