



MLS 7080277 Lake Land

**\$65,000**

**Description:**

**BUILD-READY BEAUTY WITH ELEVATED VIEWS OF STAR LAKE!** Set on 2.51 Acres Overlooking Star Lake, this High-Elevation Backlot is as Build-Ready as they come. Located on East Rosewood Trail just a Half Mile from the Public Access, the Property offers Sweeping Views and a Peaceful, Park-Like Setting.

Excavation & Site Prep are already Complete for an Estimated 44x80 Structure, with Power & High-Speed Fiber-Optic Internet available at the Road and Ready for Connection. The Landscaped Yard is framed by Mature Hardwoods, offering Natural Beauty, Privacy, and a Partial Lake View.

Whether you're planning a Large Shop, Dream Home, or Barndominium, the Groundwork is DONE, and the Setting is Exceptional! A Rare Opportunity to Skip the Prep and Get Straight to the Dream—this one's Ready when you are!

**Additional Details:**

Lot Acres	2.51
Lot Dimensions	160 x 688 x 160 x 681
School District	549
Taxes	\$82
Taxes with Assessments	\$82
Tax Year	2026

**Additional Features:**

**Driving Directions:**

From Dent, Head West on Hwy 108 for 5 miles, then turn left onto E Rosewood Dr. Immediately take the first left onto E Rosewood Trl. Continue around the bend, and the property will be marked on the right side.



Listed By:  
Jack Chivers Realty

Affinity Real Estate Inc. participates in the Regional Multiple Listing Service of Minnesota, Inc Broker Reciprocity (sm) program, allowing us to display other broker's listings on our website. All properties are subject to prior sale, change or withdrawal.



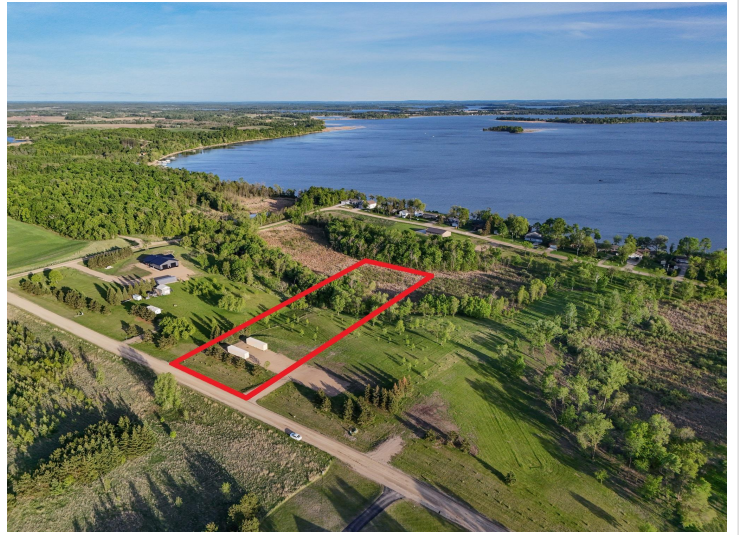
**Call Affinity Real Estate**

**218-237-3333**

**info@affinityrealestate.com**



**Affinity Real Estate - 600 Park Avenue South - Park Rapids MN 56470**



website: [www.AffinityRealEstate.com](http://www.AffinityRealEstate.com) | email: [info@affinityrealestate.com](mailto:info@affinityrealestate.com) | office: 218-237-3333 | fax:218-237-3377



**\$65,000**  
MLS 7080277 Lake Land  
329XX [C] E Rosewood Trl  
Dent MN 56528



website: [www.AffinityRealEstate.com](http://www.AffinityRealEstate.com) | email: [info@affinityrealestate.com](mailto:info@affinityrealestate.com) | office: 218-237-3333 | fax:218-237-3377



**\$65,000**  
MLS 7080277 Lake Land  
329XX [C] E Rosewood Trl  
Dent MN 56528



website: [www.AffinityRealEstate.com](http://www.AffinityRealEstate.com) | email: [info@affinityrealestate.com](mailto:info@affinityrealestate.com) | office: 218-237-3333 | fax:218-237-3377



**\$65,000**  
MLS 7080277 Lake Land  
329XX [C] E Rosewood Trl  
Dent MN 56528