



MLS 7080489 Residential

\$234,900

1,716 sq ft
2 bedrooms
1 baths

41721 County 2
Bagley MN 56621

Status: Active

Description:

Gorgeous one-level home with 20 acres between Bemidji and Bagley! Home boasts 1,440 square feet and has 10' inside ceilings, giving it an open, airy feel along with an open concept kitchen-LR-DR area! As a bonus, there is a west-facing 16' x 17' enclosed porch area with lots of windows and three sliding glass doors. There are two new mini-splits for efficient heating/cooling, along with electric baseboard and a propane furnace. There is an office or an additional bedroom too! The home is tucked back off the road and situated almost in the middle of the 20 acres, making it very private and peaceful! It is an old farmstead and includes the old house and remnants of some outbuildings, which are being sold AS-IS.

Additional Details:


Year Built	2007
Lot Acres	20
Lot Dimensions	660x1320
School District	162
Taxes	\$1,296
Taxes with Assessments	\$2,196
Tax Year	2026

Additional Features:

Basement: None **Fuel:** Electric, Propane **Heat:** Baseboard, Ductless Mini-Split, Forced Air **Sewer:** Private Sewer **Water:** 4-Inch Submersible, Drilled, Private **Air Conditioning:** Ductless Mini-Split

Driving Directions:

North of Shevlin, about 6 1/4 miles on County Road 2, property on the left.

 Listed By:
Realty Experts, LLC

Affinity Real Estate Inc. participates in the Regional Multiple Listing Service of Minnesota, Inc Broker Reciprocity (sm) program, allowing us to display other broker's listings on our website. All properties are subject to prior sale, change or withdrawal.



Call Affinity Real Estate
218-237-3333
info@affinityrealestate.com



Affinity Real Estate - 600 Park Avenue South - Park Rapids MN 56470



website: www.AffinityRealEstate.com | email: info@affinityrealestate.com | office: 218-237-3333 | fax: 218-237-3377

Affinity
REAL ESTATE INC

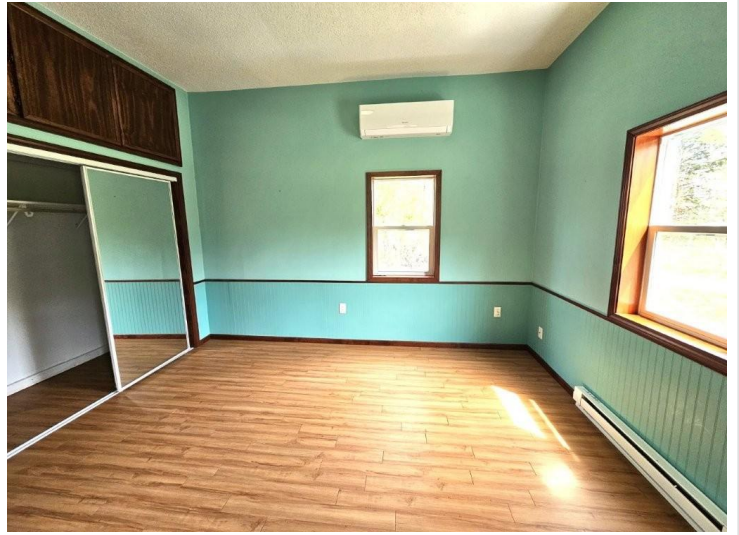
\$234,900
MLS 7080489 Residential
41721 County 2
Bagley MN 56621



website: www.AffinityRealEstate.com | email: info@affinityrealestate.com | office: 218-237-3333 | fax:218-237-3377

Affinity
REAL ESTATE INC

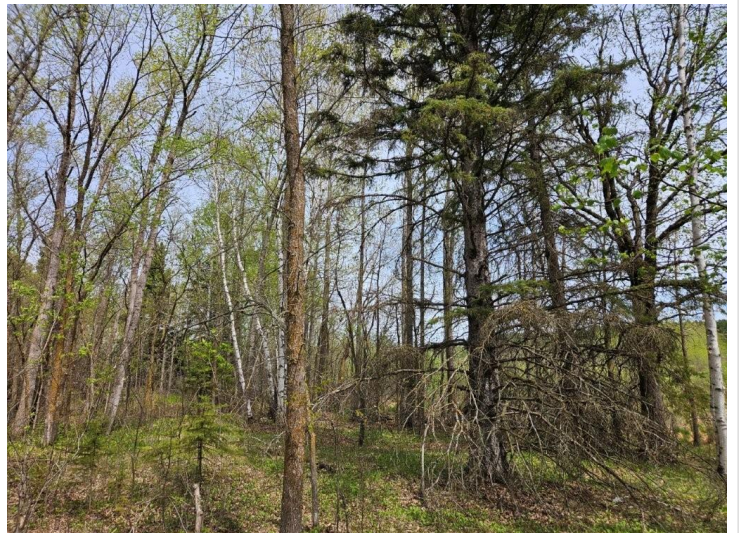
\$234,900
MLS 7080489 Residential
41721 County 2
Bagley MN 56621



website: www.AffinityRealEstate.com | email: info@affinityrealestate.com | office: 218-237-3333 | fax:218-237-3377



\$234,900
MLS 7080489 Residential
41721 County 2
Bagley MN 56621



website: www.AffinityRealEstate.com | email: info@affinityrealestate.com | office: 218-237-3333 | fax: 218-237-3377

Affinity
REAL ESTATE INC

\$234,900
MLS 7080489 Residential
41721 County 2
Bagley MN 56621



website: www.AffinityRealEstate.com | email: info@affinityrealestate.com | office: 218-237-3333 | fax:218-237-3377



\$234,900
MLS 7080489 Residential
41721 County 2
Bagley MN 56621



website: www.AffinityRealEstate.com | email: info@affinityrealestate.com | office: 218-237-3333 | fax:218-237-3377



\$234,900
MLS 7080489 Residential
41721 County 2
Bagley MN 56621