



MLS 7080495 Lake Home

\$785,590

3,000 sq ft
4 bedrooms
3 baths

8038 Lost Lake Road
Nisswa MN 56468

Waterfront: Gull

Status: Active

Description:

2nd to the last opportunities at Spider Lake Preserve on the Gull Lake Chain – Only 1 Lot Remaining!

Experience Gull Lake Chain lifestyle in this exclusive, 35-acre private enclave located in the heart of the Gull Lake Chain. Spider Lake Preserve offers a rare combination of privacy and community, featuring well-appointed homes by Thomas Allen Homes. This featured 4-bedroom, 3-bathroom walk-out design showcases thoughtful design and premium finishes. The spacious floor plan is perfect for entertaining and the privacy you are looking for with guests. Included in this plan: custom cabinetry; lvp flooring in living space; LP siding w/acents; kitchen appliance package; tray ceiling in master bedroom; vaulted living room; kitchen and dining areas and more. Also included in this listed price are upgrades that include a fireplace, tiled master shower, 3rd stall garage, beamed living room area and a few more. A few other options to consider would be the addition of a sunroom, alternate kitchen design, deck and an expanded 3rd stall garage. This home plan is available for home touring upon request in another development.

Community Amenities Include: Private Water Access; Dedicated dock area; Lakeside patio with a community firepit; On-site pickleball court; Crushed-granite trail to Gull Lake Chain at Spider Lake. Unbeatable Location: Nestled among the area's premier destinations including Lost Lake Lodge, Causeway on Gull, Bar Harbor, Zorbaz, and championship golf courses. With only three lots left, now is the time to secure your move-in for the 2026 season. Don't miss your chance to own a piece of a private community on the Gull Lake Chain.

Additional Details:

Year Built	2026
Lot Acres	0.23
Lot Dimensions	irr
Garage Stalls	3
School District	181
Taxes	\$275
Taxes with Assessments	\$275
Tax Year	2026

Listed By:
Edina Realty, Inc.

Broker Reciprocity

Disclaimer: Affinity Real Estate Inc. participates in the Regional Multiple Listing Service of Minnesota, Inc Broker Reciprocity (sm) program, allowing Brokerage North on 371 to West on City 77 (sportsman corner) to R g... City 77 to public, change or withdrawal.



Call Affinity Real Estate

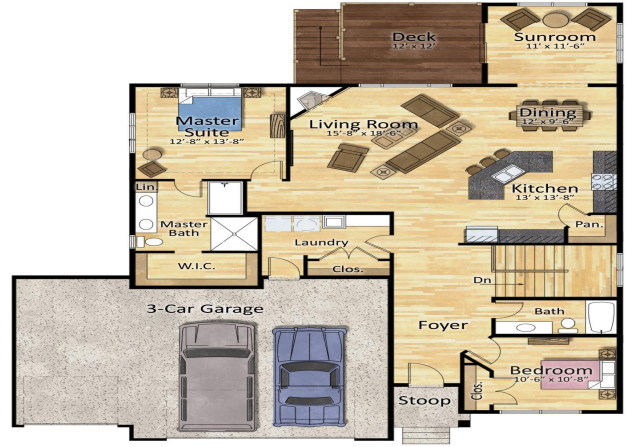
218-237-3333

info@affinityrealestate.com

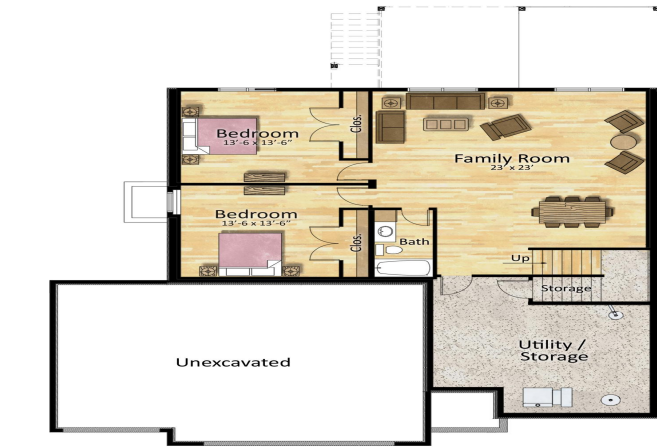
isswa, 371 South, west



Affinity Real Estate - 600 Park Avenue South - Park Rapids MN 56470



First Floor Plan



Lower Floor Plan



website: www.AffinityRealEstate.com | email: info@affinityrealestate.com | office: 218-237-3333 | fax: 218-237-3377



\$785,590
 MLS 7080495 Lake Home
 8038 Lost Lake Road
 Nisswa MN 56468



website: www.AffinityRealEstate.com | email: info@affinityrealestate.com | office: 218-237-3333 | fax:218-237-3377



\$785,590
MLS 7080495 Lake Home
8038 Lost Lake Road
Nisswa MN 56468



website: www.AffinityRealEstate.com | email: info@affinityrealestate.com | office: 218-237-3333 | fax:218-237-3377

Affinity
REAL ESTATE INC

\$785,590
MLS 7080495 Lake Home
8038 Lost Lake Road
Nisswa MN 56468



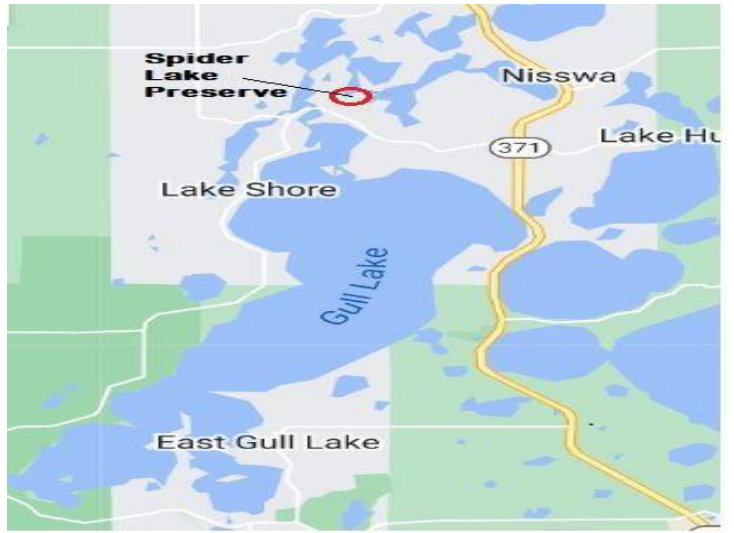
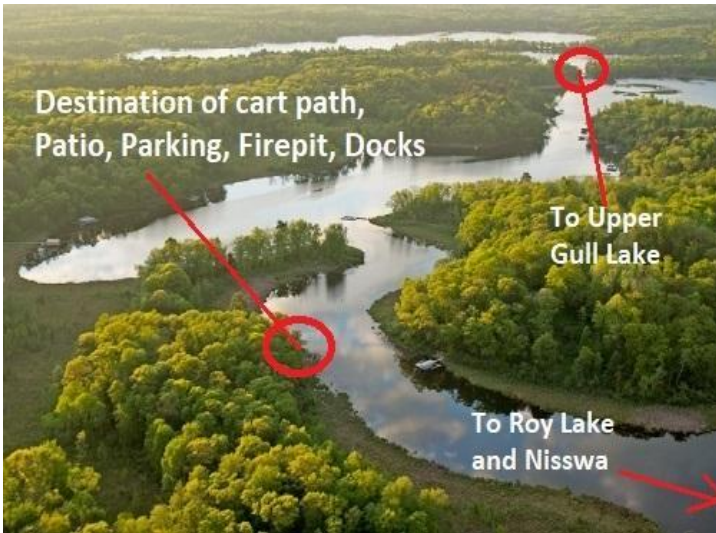


SPIDER LAKE

Preserve

 ON THE GULL LAKE CHAIN

 Spider Lake on Gull Lake Chain	 Outdoor Fireplace
 Outdoor Patio	 Pickleball Court
 Grill/ Cookouts	 Cart to Boat or Out for Dinner
 Bike in the Beautiful Surroundings	 Boat Ramp on Gull Lake
 Dining: Zorbaz, Lost Lake Lodge	 Great Hiking & Walking



website: www.AffinityRealEstate.com | email: info@affinityrealestate.com | office: 218-237-3333 | fax: 218-237-3377



\$785,590
 MLS 7080495 Lake Home
 8038 Lost Lake Road
 Nisswa MN 56468



website: www.AffinityRealEstate.com | email: info@affinityrealestate.com | office: 218-237-3333 | fax:218-237-3377



\$785,590
MLS 7080495 Lake Home
8038 Lost Lake Road
Nisswa MN 56468