



MLS 7080538 Residential

\$342,000

2,688 sq ft
4 bedrooms
3 baths

14750 Leisure Drive
Detroit Lakes MN 56501

Status: Active

Description:

Welcome to this beautifully renovated 4-bedroom, 3-bathroom home perfectly situated on a spacious 1-acre lot. Designed with modern living in mind, this home features a bright open-concept layout that seamlessly connects the living, dining, and kitchen areas—ideal for both everyday living and entertaining. Enjoy peace of mind with brand new finishes throughout, offering a fresh, stylish feel in every room. The kitchen and bathrooms have been thoughtfully updated, while the NEW ROOF adds long-term value and durability. With plenty of space inside and out, this property offers the perfect balance of comfort, functionality, and room to grow. Whether you're hosting gatherings or enjoying quiet evenings at home, this move-in-ready gem has it all.

Additional Details:

Year Built	2000
Lot Acres	1
Lot Dimensions	342x129x198x385
Garage Stalls	2
School District	22
Taxes	\$2,688
Taxes with Assessments	\$2,688
Tax Year	2025

Additional Features:

Basement: Finished **Fuel:** Propane **Garage:** 2 **Heat:** Forced Air **Sewer:** Private Sewer, Septic System Compliant - Yes, Tank with Drainage Field **Water:** Private, Well **Air Conditioning:** Central Air

Driving Directions:

Follow Co Hwy 29 and Co Hwy 54 to Leisure Dr in Burlington Township, destination will be on the left.



Listed By:
GRAND PROPERTIES REAL ESTATE

Affinity Real Estate Inc. participates in the Regional Multiple Listing Service of Minnesota, Inc Broker Reciprocity (sm) program, allowing us to display other broker's listings on our website. All properties are subject to prior sale, change or withdrawal.



Call Affinity Real Estate

218-237-3333

info@affinityrealestate.com



Affinity Real Estate - 600 Park Avenue South - Park Rapids MN 56470



website: www.AffinityRealEstate.com | email: info@affinityrealestate.com | office: 218-237-3333 | fax: 218-237-3377

Affinity
REAL ESTATE INC

\$342,000
MLS 7080538 Residential
14750 Leisure Drive
Detroit Lakes MN 56501



website: www.AffinityRealEstate.com | email: info@affinityrealestate.com | office: 218-237-3333 | fax:218-237-3377

Affinity
REAL ESTATE INC

\$342,000
MLS 7080538 Residential
14750 Leisure Drive
Detroit Lakes MN 56501



website: www.AffinityRealEstate.com | email: info@affinityrealestate.com | office: 218-237-3333 | fax:218-237-3377



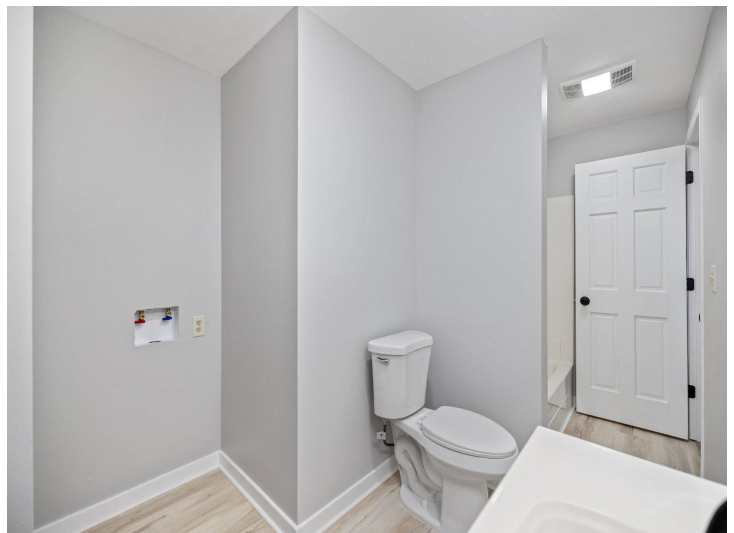
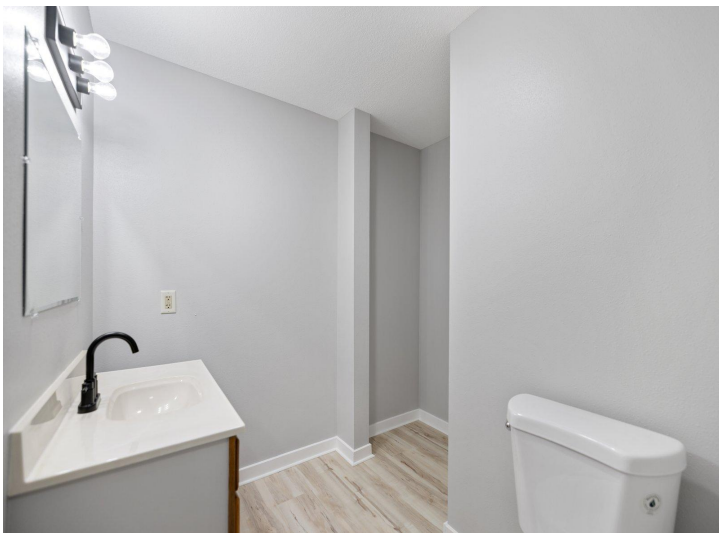
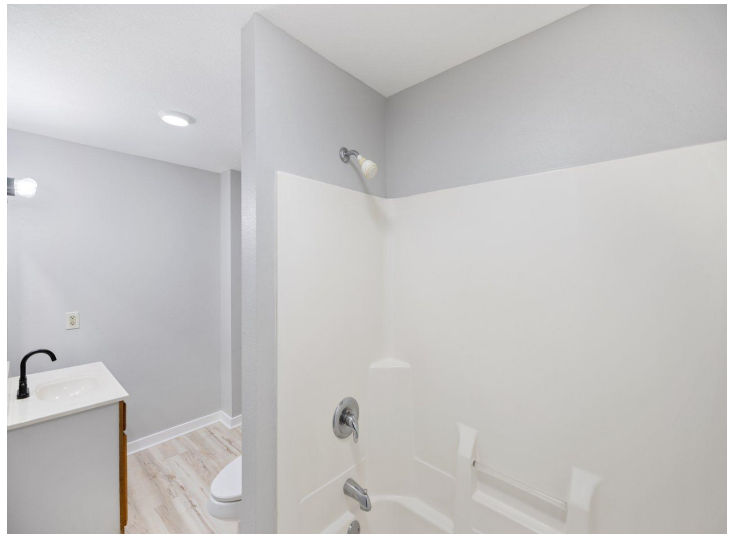
\$342,000
MLS 7080538 Residential
14750 Leisure Drive
Detroit Lakes MN 56501



website: www.AffinityRealEstate.com | email: info@affinityrealestate.com | office: 218-237-3333 | fax:218-237-3377



\$342,000
MLS 7080538 Residential
14750 Leisure Drive
Detroit Lakes MN 56501



website: www.AffinityRealEstate.com | email: info@affinityrealestate.com | office: 218-237-3333 | fax: 218-237-3377



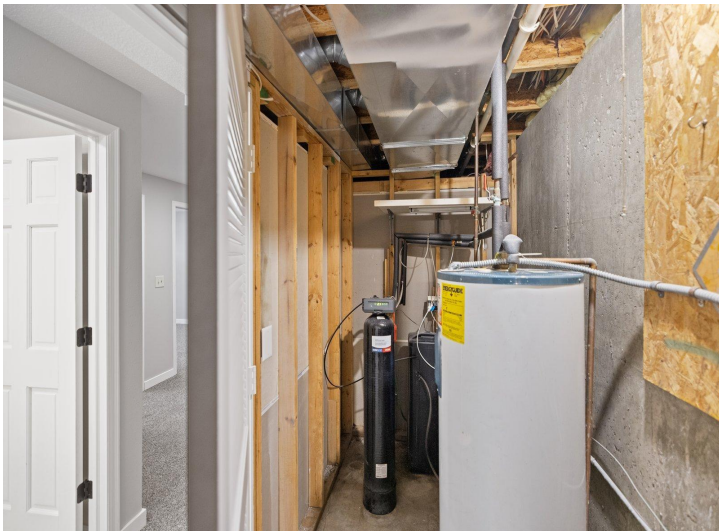
\$342,000
MLS 7080538 Residential
14750 Leisure Drive
Detroit Lakes MN 56501



website: www.AffinityRealEstate.com | email: info@affinityrealestate.com | office: 218-237-3333 | fax:218-237-3377



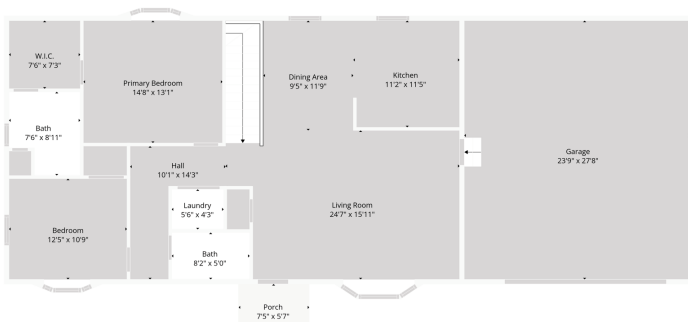
\$342,000
MLS 7080538 Residential
14750 Leisure Drive
Detroit Lakes MN 56501



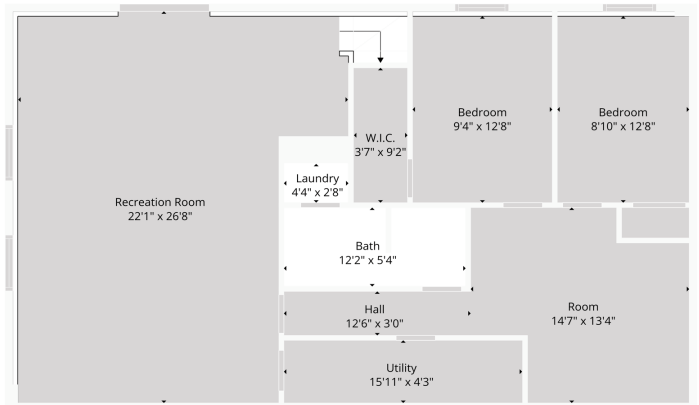
website: www.AffinityRealEstate.com | email: info@affinityrealestate.com | office: 218-237-3333 | fax:218-237-3377



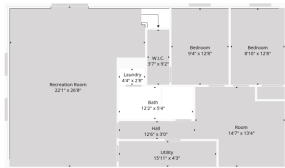
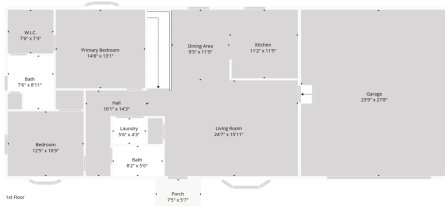
\$342,000
MLS 7080538 Residential
14750 Leisure Drive
Detroit Lakes MN 56501



TOTAL: 2447 sq. ft.
 Basement: 1137 sq. ft., 1st floor: 1310 sq. ft.
 EXCLUDED AREAS: UTILITY: 68 sq. ft., GARAGE: 656 sq. ft., PORCH: 42 sq. ft.,
 BAY WINDOW: 21 sq. ft., WALLS: 187 sq. ft.



TOTAL: 2447 sq. ft.
 Basement: 1137 sq. ft., 1st floor: 1310 sq. ft.
 EXCLUDED AREAS: UTILITY: 68 sq. ft., GARAGE: 656 sq. ft., PORCH: 42 sq. ft.,
 BAY WINDOW: 21 sq. ft., WALLS: 187 sq. ft.



TOTAL: 2447 sq. ft.
 Basement: 1137 sq. ft., 1st floor: 1310 sq. ft.
 EXCLUDED AREAS: UTILITY: 68 sq. ft., GARAGE: 656 sq. ft., PORCH: 42 sq. ft.,
 BAY WINDOW: 21 sq. ft., WALLS: 187 sq. ft.



website: www.AffinityRealEstate.com | email: info@affinityrealestate.com | office: 218-237-3333 | fax: 218-237-3377



\$342,000
 MLS 7080538 Residential
 14750 Leisure Drive
 Detroit Lakes MN 56501



website: www.AffinityRealEstate.com | email: info@affinityrealestate.com | office: 218-237-3333 | fax:218-237-3377



\$342,000
MLS 7080538 Residential
14750 Leisure Drive
Detroit Lakes MN 56501