



MLS 7080813 Lake Home

\$925,000

3,094 sq ft
5 bedrooms
4 baths

8038 Lost Lake Road
Nisswa MN 56468

Waterfront: Gull

Status: Active

Description:

Last lot and lake home in Spider Lake Preserve on The Gull Lake Chain of Lakes. Experience the pinnacle of the Gull Lake Chain lifestyle in this exclusive, 35-acre private enclave located in the heart of the Gull Lake Chain. Spider Lake Preserve offers a rare combination of privacy and community, featuring high-end custom homes by Thomas Allen Homes. This featured 5-bedroom, 4-bathroom walk-out rambler showcases thoughtful design and premium finishes. The spacious floor plan is perfect for entertaining, with base pricing starting at around \$895,000, depending upon lot choice.

Community Amenities Include: Community dock, Lakeside patio with a community firepit; On-site pickleball court; Pontoon slip with a 10 year renewable lease across street at Lost Lake Lodge; crushed-granite trail down to Spider Lake. Unbeatable Location: Nestled among the area's premier destinations including Lost Lake Lodge, Causeway on Gull, Bar Harbor, Zorbaz, and championship golf courses. With only this lot remaining, now is the time to secure your move-in for the 2026 season. Don't miss your chance to own a piece of a private community on the Gull Lake Chain.

Additional Details:

Year Built	2026
Lot Acres	5312
Lot Dimensions	64x83 Build Pad
Garage Stalls	3
School District	181
Taxes	(unreported)
Taxes with Assessments	(unreported)
Tax Year	2026

Additional Features:

Basement: Walkout **Fuel:** Natural Gas **Garage:** 3 **Heat:** Forced Air **Sewer:** City Sewer/Connected **Water:** Shared System, Well **Air Conditioning:** Central Air

Driving Directions:

From Highway 371 in Nisswa, take Country Rd 77 West to Zorbaz. Turn Right on Lost Lake Road to Community on your right.



Listed By:
Edina Realty, Inc.

Affinity Real Estate Inc. participates in the Regional Multiple Listing Service of Minnesota, Inc Broker Reciprocity (sm) program, allowing us to display other broker's listings on our website. All properties are subject to prior sale, change or withdrawal.



Call Affinity Real Estate

218-237-3333

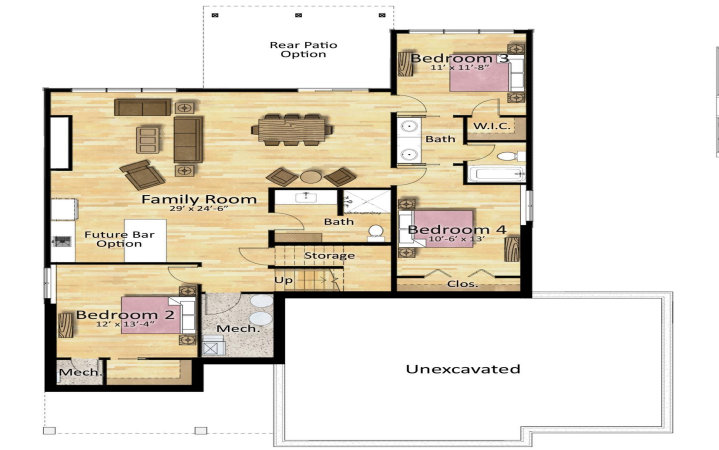
info@affinityrealestate.com



Affinity Real Estate - 600 Park Avenue South - Park Rapids MN 56470



First Floor Plan



Lower Floor Plan



website: www.AffinityRealEstate.com | email: info@affinityrealestate.com | office: 218-237-3333 | fax:218-237-3377



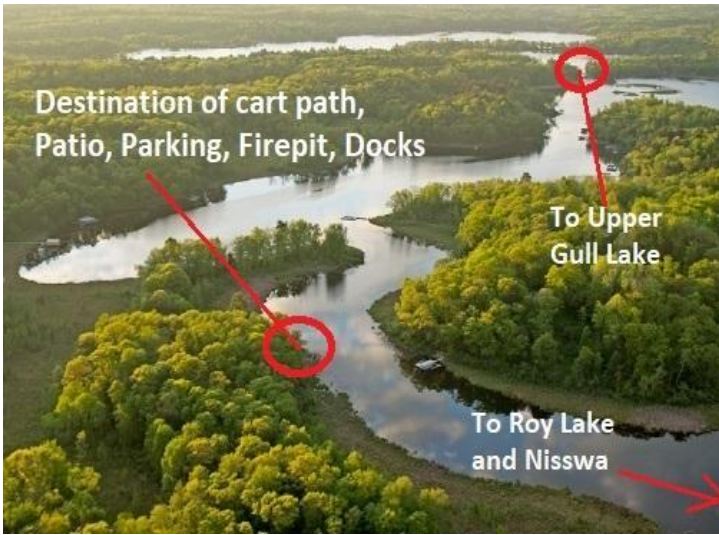
\$925,000
 MLS 7080813 Lake Home
 8038 Lost Lake Road
 Nisswa MN 56468



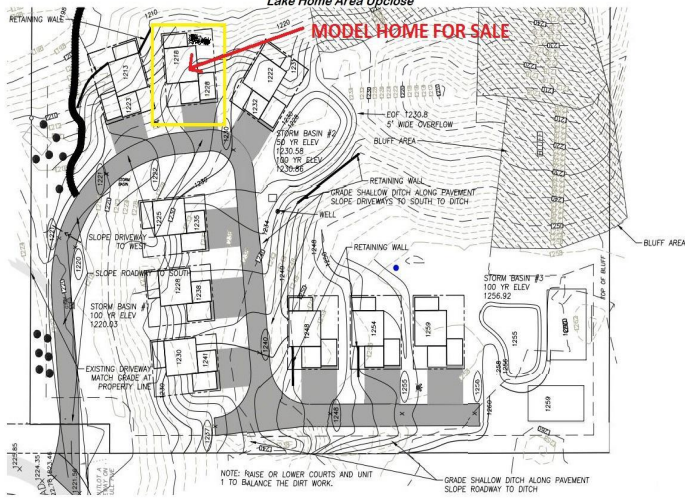
website: www.AffinityRealEstate.com | email: info@affinityrealestate.com | office: 218-237-3333 | fax: 218-237-3377



\$925,000
MLS 7080813 Lake Home
8038 Lost Lake Road
Nisswa MN 56468



**Spider Lake Preserve
Lake Home Area Upclose**



SPIDER LAKE

Preserve

ON THE GULL LAKE CHAIN

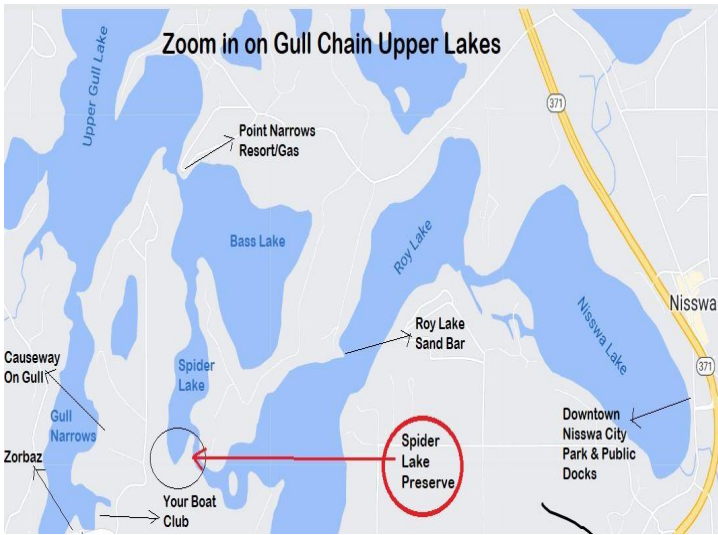
 Spider Lake on Gull Lake Chain	 Outdoor Fireplace
 Outdoor Patio	 Pickleball Court
 Grill/ Cookouts	 Cart to Boat or Out for Dinner
 Bike in the Beautiful Surroundings	 Boat Ramp on Gull Lake
 Dining: Zorbaz, Lost Lake Lodge	 Great Hiking & Walking



website: www.AffinityRealEstate.com | email: info@affinityrealestate.com | office: 218-237-3333 | fax: 218-237-3377



\$925,000
 MLS 7080813 Lake Home
 8038 Lost Lake Road
 Nisswa MN 56468



website: www.AffinityRealEstate.com | email: info@affinityrealestate.com | office: 218-237-3333 | fax:218-237-3377



\$925,000
 MLS 7080813 Lake Home
 8038 Lost Lake Road
 Nisswa MN 56468