



MLS 7080818 Lake Home

**\$534,900**

2,136 sq ft  
3 bedrooms  
2 baths

26636 Spike Buck Drive  
Nisswa MN 56468

Waterfront: Edna

Status: Active

**Description:**

Experience the quiet luxury of lakeside living on Edna Lake. Set on a private, heavily wooded 1.31-acre lot with 120 feet of shoreline, this custom 2009-built retreat delivers the rare combination of seclusion, natural beauty, and effortless main-level living. Lightly lived in and exceptionally maintained, the home feels timeless, warm, and ready for immediate enjoyment. Wake up to glowing east-facing sunrise views over the water, enjoyed from expansive windows and more than 600 sq. ft. of lakeside decking—your front-row seat to morning coffee, evening fires, and everything in between. The home offers 2136 finished sq. ft. with all living facilities on the main level, 3 bedrooms, 2 baths, including a private primary suite with walk-in closet and full bath, Vaulted great room, hardwood and tile floors, kitchen center island, gas fireplace, central air, and main-level laundry for true one-level convenience. Additional features include a detached 2-car garage, paved driveway, patio, and dock. The wooded setting offers unmatched privacy, yet you're just minutes from Nisswa, Brainerd, championship golf, boutique shopping, dining, and miles of trails. Whether you're seeking a year-round residence or a low-maintenance lake escape, this property delivers the perfect blend of comfort, nature, and Northwoods charm. A rare opportunity to own a beautifully kept lake home in one of the Brainerd Lakes Area's most desirable locations

**Additional Details:**

Year Built	2009
Lot Acres	1.31
Lot Dimensions	1.31 acres
Garage Stalls	2
School District	186
Taxes	\$3,904
Taxes with Assessments	\$3,904
Tax Year	2026

**Additional Features:**

**Basement:** None **Fuel:** Natural Gas **Garage:** 2 **Heat:** Forced Air **Sewer:** Tank with Drainage Field **Water:** 4-Inch Submersible **Air Conditioning:** None

**Driving Directions:**



Listed By: **Nisswa:** Left on Hwy 29 for 1.1 miles. Left on Spike Buck for 0.3 miles to property on left  
Gallery of Homes

Affinity Real Estate Inc. participates in the Regional Multiple Listing Service of Minnesota, Inc Broker Reciprocity (sm) program, allowing us to display other broker's listings on our website. All properties are subject to prior sale, change or withdrawal.



**Call Affinity Real Estate**

**218-237-3333**

**info@affinityrealestate.com**



**Affinity Real Estate - 600 Park Avenue South - Park Rapids MN 56470**



website: [www.AffinityRealEstate.com](http://www.AffinityRealEstate.com) | email: [info@affinityrealestate.com](mailto:info@affinityrealestate.com) | office: 218-237-3333 | fax: 218-237-3377

**Affinity**  
REAL ESTATE INC

**\$534,900**  
MLS 7080818 Lake Home  
26636 Spike Buck Drive  
Nisswa MN 56468



website: [www.AffinityRealEstate.com](http://www.AffinityRealEstate.com) | email: [info@affinityrealestate.com](mailto:info@affinityrealestate.com) | office: 218-237-3333 | fax:218-237-3377

**Affinity**  
REAL ESTATE INC

**\$534,900**  
MLS 7080818 Lake Home  
26636 Spike Buck Drive  
Nisswa MN 56468



website: [www.AffinityRealEstate.com](http://www.AffinityRealEstate.com) | email: [info@affinityrealestate.com](mailto:info@affinityrealestate.com) | office: 218-237-3333 | fax:218-237-3377

**Affinity**  
REAL ESTATE INC

**\$534,900**  
MLS 7080818 Lake Home  
26636 Spike Buck Drive  
Nisswa MN 56468



website: [www.AffinityRealEstate.com](http://www.AffinityRealEstate.com) | email: [info@affinityrealestate.com](mailto:info@affinityrealestate.com) | office: 218-237-3333 | fax: 218-237-3377

**Affinity**  
REAL ESTATE INC

**\$534,900**  
MLS 7080818 Lake Home  
26636 Spike Buck Drive  
Nisswa MN 56468



website: [www.AffinityRealEstate.com](http://www.AffinityRealEstate.com) | email: [info@affinityrealestate.com](mailto:info@affinityrealestate.com) | office: 218-237-3333 | fax:218-237-3377



**\$534,900**  
MLS 7080818 Lake Home  
26636 Spike Buck Drive  
Nisswa MN 56468



website: [www.AffinityRealEstate.com](http://www.AffinityRealEstate.com) | email: [info@affinityrealestate.com](mailto:info@affinityrealestate.com) | office: 218-237-3333 | fax:218-237-3377

**Affinity**  
REAL ESTATE INC

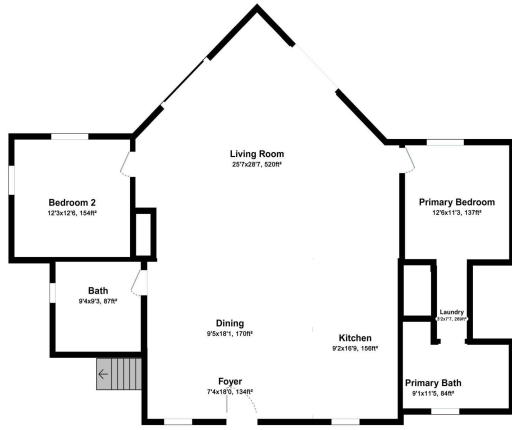
**\$534,900**  
MLS 7080818 Lake Home  
26636 Spike Buck Drive  
Nisswa MN 56468



website: [www.AffinityRealEstate.com](http://www.AffinityRealEstate.com) | email: [info@affinityrealestate.com](mailto:info@affinityrealestate.com) | office: 218-237-3333 | fax:218-237-3377



**\$534,900**  
MLS 7080818 Lake Home  
26636 Spike Buck Drive  
Nisswa MN 56468



For illustration purposes only. Not to scale.

Ground Floor



For illustration purposes only. Not to scale.

First Floor

website: [www.AffinityRealEstate.com](http://www.AffinityRealEstate.com) | email: [info@affinityrealestate.com](mailto:info@affinityrealestate.com) | office: 218-237-3333 | fax: 218-237-3377



**\$534,900**  
 MLS 7080818 Lake Home  
 26636 Spike Buck Drive  
 Nisswa MN 56468