

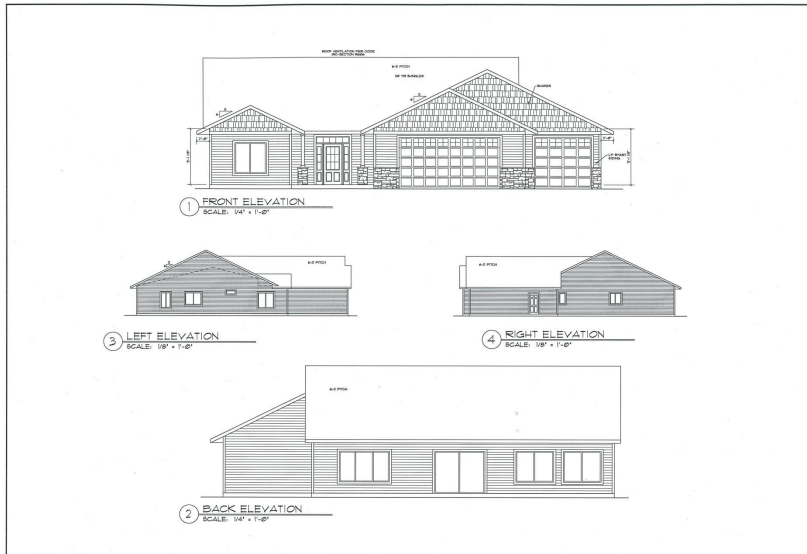
MLS 7080824 Residential

**\$497,950**

2,033 sq ft  
3 bedrooms  
2 baths

TBD Lot 1 Block 2 Deer Lane  
Wadena MN 56482

Status: Active



**Description:**

To be built home - This beautiful new construction 3 bedroom/ 2 bath home has over 2,000 sq ft of living space and offers easy one level living! Great open floor plan, with gourmet style kitchen, 4 season porch, primary suite with tiled shower, in-floor heat, forced air furnace, AC, LP Smart siding and several allowances offered to help you make this home your own! Great location, close to Leaf River Trail and Whitetail Run Golf Course- which was voted the best public course in Minnesota! More lots available.

**Additional Details:**

Year Built	2026
Lot Acres	1.048
Lot Dimensions	194x213x181x262
Garage Stalls	3
School District	2155
Taxes	\$320
Taxes with Assessments	\$320
Tax Year	2026

**Additional Features:**

**Fuel:** Propane **Heat:** Forced Air, In-Floor Heating

**Driving Directions:**

From Wadena, go North on #71, to right on Leaf River Road, to right on Driver Road, to left on Deer Lane. Lot is on the corner of Driver Road and Deer Lane.



Listed By:  
Edina Realty, Inc.

Affinity Real Estate Inc. participates in the Regional Multiple Listing Service of Minnesota, Inc Broker Reciprocity (sm) program, allowing us to display other broker's listings on our website. All properties are subject to prior sale, change or withdrawal.



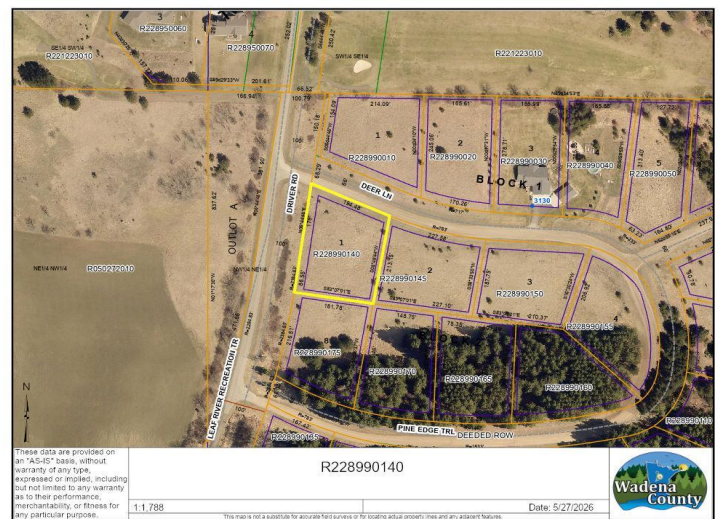
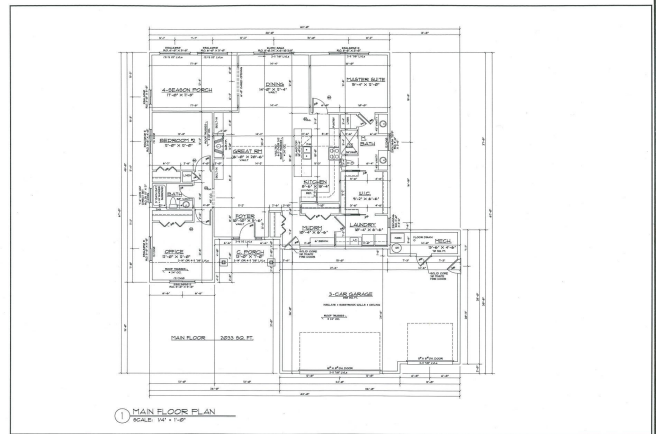
Call Affinity Real Estate

**218-237-3333**

[info@affinityrealestate.com](mailto:info@affinityrealestate.com)



Affinity Real Estate - 600 Park Avenue South - Park Rapids MN 56470



website: [www.AffinityRealEstate.com](http://www.AffinityRealEstate.com) | email: [info@affinityrealestate.com](mailto:info@affinityrealestate.com) | office: 218-237-3333 | fax:218-237-3377



**\$497,950**  
 MLS 7080824 Residential  
 TBD Lot 1 Block 2 Deer Lane  
 Wadena MN 56482