



MLS 7080886 Lake Home

\$679,000

2,426 sq ft
4 bedrooms
3 baths

8038 Lost Lake Road
Nisswa MN 56468

Waterfront: Spider Lake (Lake
Shore City)

Status: Active

Description:

Last lot and lake home in Spider Lake Preserve on The Gull Lake Chain of Lakes. Experience the pinnacle of the Gull Lake Chain lifestyle in this exclusive, 35-acre private enclave located in the heart of the Gull Lake Chain. Spider Lake Preserve offers a rare combination of privacy and community, featuring lake homes by Thomas Allen Homes. This featured 4-bedroom, 2-bathroom walk-out rambler showcases thoughtful design and premium finishes.

Community Amenities Include: Community dock, Lakeside patio with a community firepit; On-site pickleball court; Pontoon slip with a 10 year renewable lease across street at Lost Lake Lodge; crushed-granite trail down to Spider Lake. Unbeatable Location: Nestled among the area's premier destinations including Lost Lake Lodge, Causeway on Gull, Bar Harbor, Zorbaz, and championship golf courses. With only this lot remaining, now is the time to secure your move-in for the 2026 season. Don't miss your chance to own a piece of a private community on the Gull Lake Chain.

Additional Details:

Year Built	2026
Lot Acres	0.23
Lot Dimensions	irr
Garage Stalls	3
School District	181
Taxes	\$275
Taxes with Assessments	\$275
Tax Year	2026

Additional Features:

Fuel: Natural Gas **Heat:** Forced Air

Driving Directions:

Brainerd, North on 371 to West on Cty 77 (sportsman corner) to Right on Lost Lake Rd by Zorba's FROM Nisswa, 371 South, west on Cty 77 to right on Lost Lake Rd.s.



Listed By:
Edina Realty, Inc.

Affinity Real Estate Inc. participates in the Regional Multiple Listing Service of Minnesota, Inc Broker Reciprocity (sm) program, allowing us to display other broker's listings on our website. All properties are subject to prior sale, change or withdrawal.



Call Affinity Real Estate

218-237-3333

info@affinityrealestate.com



Affinity Real Estate - 600 Park Avenue South - Park Rapids MN 56470



website: www.AffinityRealEstate.com | email: info@affinityrealestate.com | office: 218-237-3333 | fax:218-237-3377



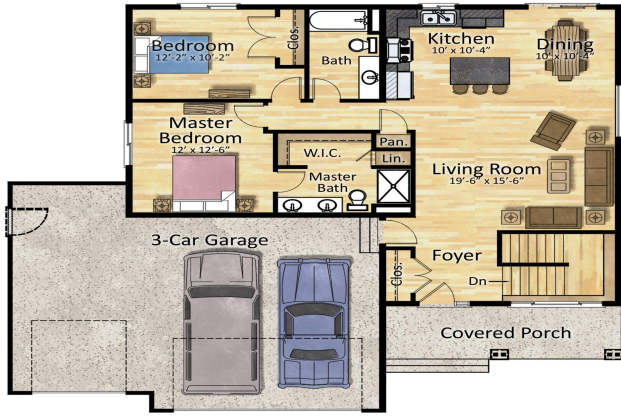
\$679,000
MLS 7080886 Lake Home
8038 Lost Lake Road
Nisswa MN 56468



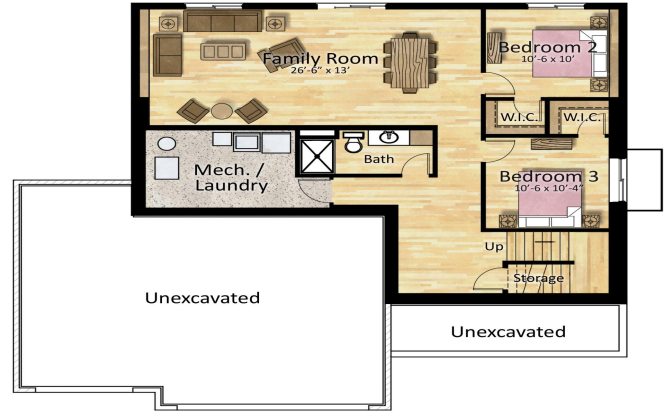
website: www.AffinityRealEstate.com | email: info@affinityrealestate.com | office: 218-237-3333 | fax: 218-237-3377

Affinity
REAL ESTATE INC

\$679,000
MLS 7080886 Lake Home
8038 Lost Lake Road
Nisswa MN 56468



First Floor Plan

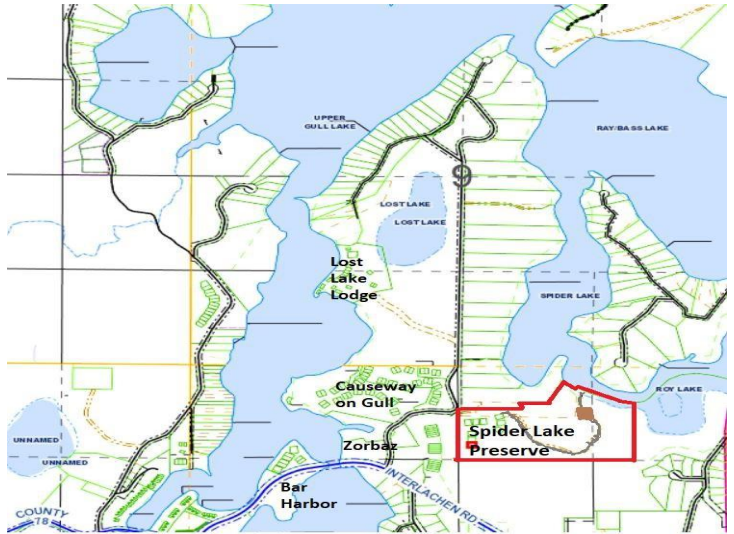


Lower Floor Plan

ResidentialRendering.com



ResidentialRendering.com



SPIDER LAKE
Preserve
 ON THE GULL LAKE CHAIN

Spider Lake on Gull Lake Chain	Outdoor Fireplace
Outdoor Patio	Pickleball Court
Grill/ Cookouts	Cart to Boat or Out for Dinner
Bike in the Beautiful Surroundings	Boat Ramp on Gull Lake
Dining: Zorbaz, Lost Lake Lodge	Great Hiking & Walking



website: www.AffinityRealEstate.com | email: info@affinityrealestate.com | office: 218-237-3333 | fax: 218-237-3377



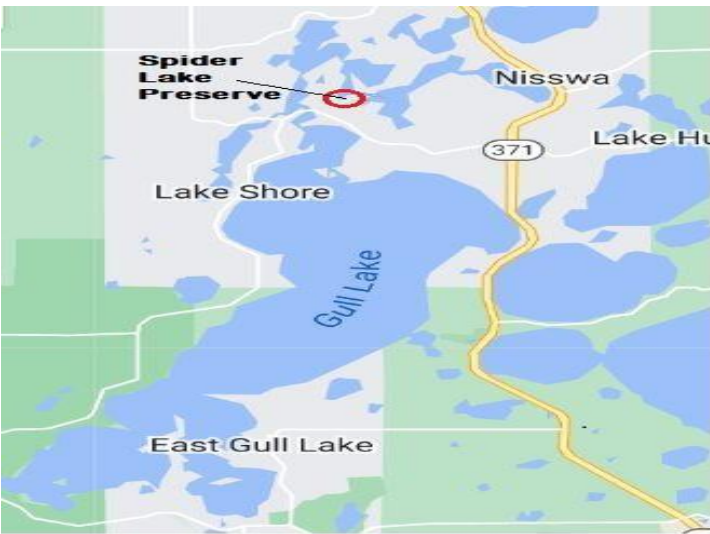
\$679,000
 MLS 7080886 Lake Home
 8038 Lost Lake Road
 Nisswa MN 56468



website: www.AffinityRealEstate.com | email: info@affinityrealestate.com | office: 218-237-3333 | fax:218-237-3377



\$679,000
MLS 7080886 Lake Home
8038 Lost Lake Road
Nisswa MN 56468



website: www.AffinityRealEstate.com | email: info@affinityrealestate.com | office: 218-237-3333 | fax:218-237-3377



\$679,000
MLS 7080886 Lake Home
8038 Lost Lake Road
Nisswa MN 56468