



MLS 7080996 Lake Home

\$930,000

4,374 sq ft
4 bedrooms
4 baths

27177 Ridgewood Drive
Merrifield MN 56465

Waterfront: Lower Mission

Status: Coming Soon

Description:

More photos coming. New address is 26992 Hoot Owl Drive. Extraordinary peninsula property spanning Upper and Lower Mission Lake offering a rare combination of privacy, scale, investment potential, and future flexibility in the heart of the Brainerd Lakes Area. Set on approximately 21.67 acres with 1,682 feet of shoreline, this unique Northwoods compound includes a spacious main home, separate guest house, two oversized garages, and dock access on Lower Mission Lake.

Designed for multi-generational living, vacation rental income, or future development opportunities, the property includes three surveyed and recorded split lots, including two waterfront lots, offering exceptional flexibility for future development, resale opportunities, or multi-generational ownership—creating added value and convenience for investors, developers, or buyers seeking a legacy property with long-term versatility.


The main residence features 6 bedrooms, including two non-egress bedrooms, 4 bathrooms, multiple gathering spaces, vaulted ceilings, formal dining, and three fireplaces, creating a warm and inviting lake retreat atmosphere. The separate guest house provides additional flexibility for guests, extended family, or rental use. A 52x28 garage/shop offers substantial storage for lake toys, vehicles, and equipment, while the additional 32x24 garage includes loft space ideal for extra storage, workshop space, or hobby use.

Currently operating with an established VRBO rental history, this property offers both lifestyle and income potential in a highly sought-after lake setting. The level shoreline, panoramic water views, mature trees, and private peninsula setting create a truly one-of-a-kind ownership opportunity just minutes from Crosslake, Crosby, and the many amenities of the Brainerd Lakes Area.

Additional Details:

Year Built 1990
Lot Acres 21.67

Lot Dimensions 1102x414xirr

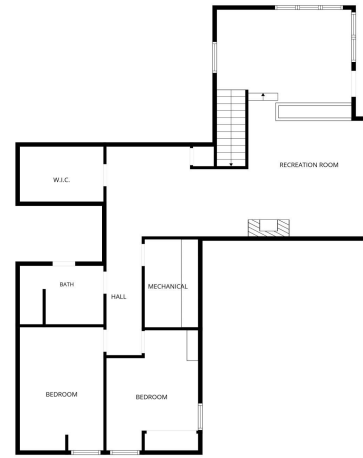

 Listed By Edina Realty, Inc.
 School District 182
 Affinity Real Estate Inc. participates in the Regional Multiple Listing Service of Minnesota, Inc Broker Reciprocity (sm) program, allowing Taxed with Assessments listing on our website. All properties are subject to prior sale, change or withdrawal.
 Tax Year 2025



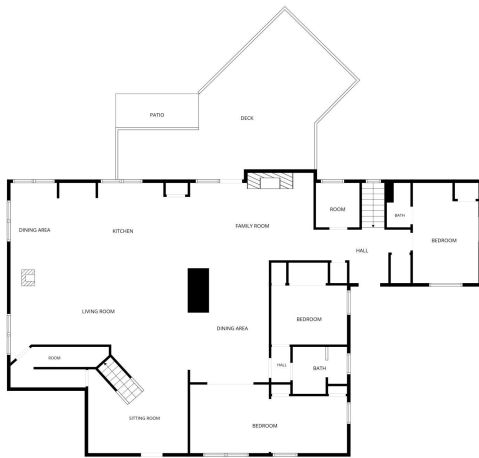
Call Affinity Real Estate
218-237-3333
info@affinityrealestate.com



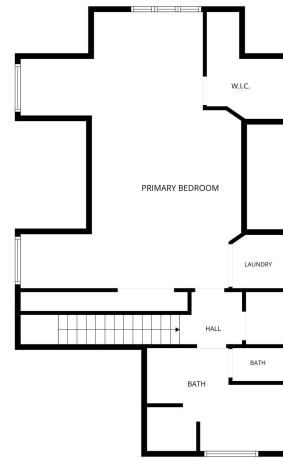
Affinity Real Estate - 600 Park Avenue South - Park Rapids MN 56470



FLOOR PLAN CREATED BY CUBICASA APP. MEASUREMENTS DEEMED HIGHLY RELIABLE BUT NOT GUARANTEED.



FLOOR PLAN CREATED BY CUBICASA APP. MEASUREMENTS DEEMED HIGHLY RELIABLE BUT NOT GUARANTEED.



FLOOR PLAN CREATED BY CUBICASA APP. MEASUREMENTS DEEMED HIGHLY RELIABLE BUT NOT GUARANTEED.

website: www.AffinityRealEstate.com | email: info@affinityrealestate.com | office: 218-237-3333 | fax: 218-237-3377



\$930,000
 MLS 7080996 Lake Home
 27177 Ridgewood Drive
 Merrifield MN 56465