



MLS 7081109 Residential

\$350,000

1,972 sq ft
4 bedrooms
1 baths

6458 Clearwater Road
Baxter MN 56425

Status: Coming Soon

Description:

Welcome home to this well-maintained 4-bedroom rambler situated on a rare and spacious 2.29-acre corner lot in the heart of Baxter. Offering the perfect blend of privacy, convenience, and potential, this property features plenty of room to enjoy both inside and out — including the possibility to split the west lot for future development or investment opportunities.

This spacious home has seen many recent updates, giving buyers peace of mind for years to come. Improvements include a newer roof, furnace and central A/C unit, washer and dryer, and a tar driveway. Inside, you'll appreciate the functional layout with generous living spaces, comfortable bedrooms, and abundant natural light throughout.

The expansive yard provides endless possibilities for entertaining, gardening, recreation, or simply enjoying the serene setting while still being close to schools, shopping, dining, and all the amenities Baxter has to offer. Rare opportunities like this don't come along often!

Additional Details:

Year Built	1962
Lot Acres	2.29
Lot Dimensions	382x260
Garage Stalls	2
School District	181
Taxes	\$2,966
Taxes with Assessments	\$2,966
Tax Year	2025

Additional Features:

Basement: Block, Drain Tiled, Full, Partially Finished, Storage Space, Sump Pump **Fuel:** Natural Gas **Garage:** 2 **Heat:** Forced Air **Sewer:** City Sewer/Connected **Water:** City Water/Connected **Air Conditioning:** Central Air

Driving Directions:

From Baxter, go north on Inglewood Drive to west (left) on Clearwater Drive to home on right.



Listed By:
Century 21 Brainerd Realty

Affinity Real Estate Inc. participates in the Regional Multiple Listing Service of Minnesota, Inc Broker Reciprocity (sm) program, allowing us to display other broker's listings on our website. All properties are subject to prior sale, change or withdrawal.



Call Affinity Real Estate

218-237-3333

info@affinityrealestate.com



Affinity Real Estate - 600 Park Avenue South - Park Rapids MN 56470



website: www.AffinityRealEstate.com | email: info@affinityrealestate.com | office: 218-237-3333 | fax: 218-237-3377

Affinity
REAL ESTATE INC

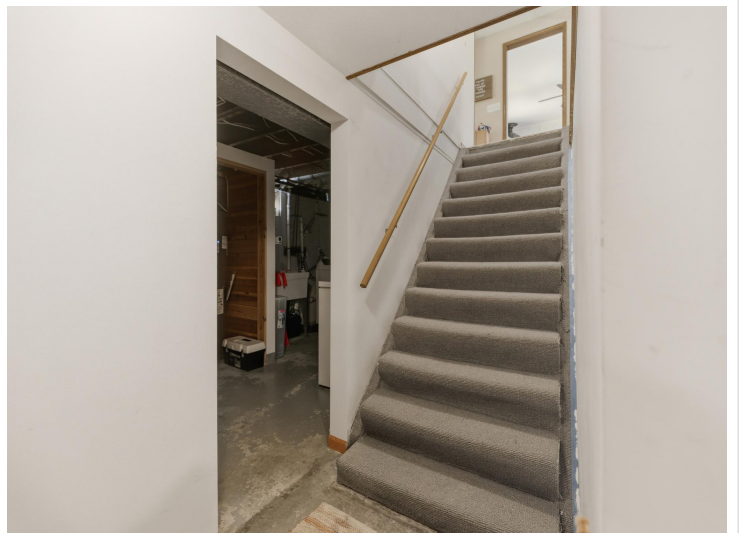
\$350,000
MLS 7081109 Residential
6458 Clearwater Road
Baxter MN 56425



website: www.AffinityRealEstate.com | email: info@affinityrealestate.com | office: 218-237-3333 | fax: 218-237-3377

Affinity
REAL ESTATE INC

\$350,000
MLS 7081109 Residential
6458 Clearwater Road
Baxter MN 56425



website: www.AffinityRealEstate.com | email: info@affinityrealestate.com | office: 218-237-3333 | fax: 218-237-3377



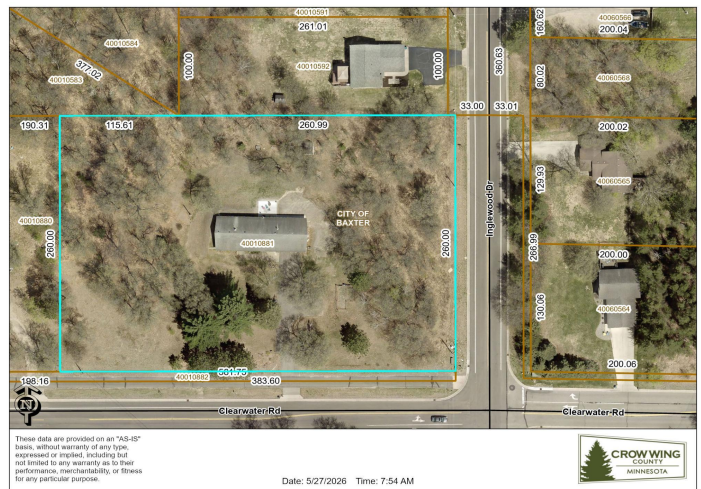
\$350,000
MLS 7081109 Residential
6458 Clearwater Road
Baxter MN 56425



website: www.AffinityRealEstate.com | email: info@affinityrealestate.com | office: 218-237-3333 | fax:218-237-3377

Affinity
REAL ESTATE INC

\$350,000
MLS 7081109 Residential
6458 Clearwater Road
Baxter MN 56425



website: www.AffinityRealEstate.com | email: info@affinityrealestate.com | office: 218-237-3333 | fax:218-237-3377



\$350,000
 MLS 7081109 Residential
 6458 Clearwater Road
 Baxter MN 56425