



MLS 7081385 Lake Land

\$135,900

Description:

Rare opportunity to own 150' of lakeshore on Dead Lake in Nevis, Minnesota. One of the clearest and most serene lakes in the area! This beautiful vacant lake lot is ready for your vision, whether it's a cozy cabin getaway or a lake home. Peaceful, private, and picture-perfect. Don't miss your chance to claim this slice of Minnesota paradise!

Additional Details:

Lot Acres	1.33
Lot Dimensions	151x347x152x398
School District	308
Taxes	\$718
Taxes with Assessments	\$718
Tax Year	2026

Additional Features:

Driving Directions:

From Park Rapids head East on 34 to State 226 (Dorset Road). North on State 226 for 1.8 miles to County 50, right onto Co 50 for 2.4 miles, right on County 40 for 0.7 miles, left onto 225th Ave for 2 miles to a right on Heartland Dr, right onto Hamilton Ln to Heather Trl. Property on the left.



Listed By:
Coldwell Banker Crown Realtors

Affinity Real Estate Inc. participates in the Regional Multiple Listing Service of Minnesota, Inc Broker Reciprocity (sm) program, allowing us to display other broker's listings on our website. All properties are subject to prior sale, change or withdrawal.



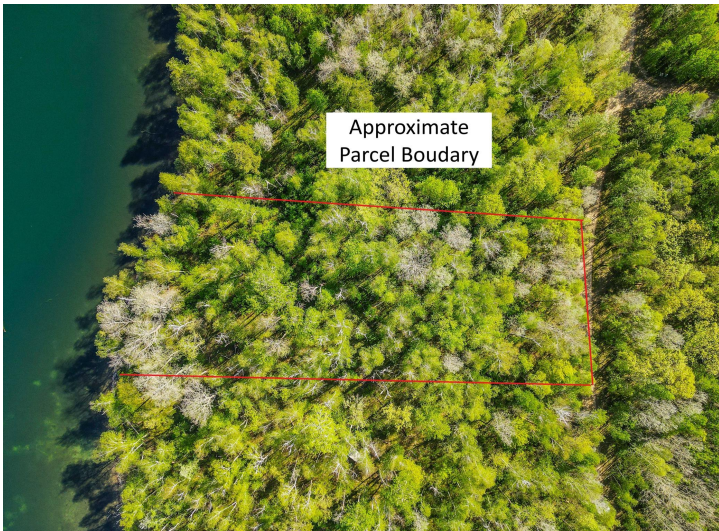
Call Affinity Real Estate

218-237-3333

info@affinityrealestate.com



Affinity Real Estate - 600 Park Avenue South - Park Rapids MN 56470



website: www.AffinityRealEstate.com | email: info@affinityrealestate.com | office: 218-237-3333 | fax: 218-237-3377

Affinity
REAL ESTATE INC

\$135,900
MLS 7081385 Lake Land
TBD Heather Trail
Nevis MN 56467



website: www.AffinityRealEstate.com | email: info@affinityrealestate.com | office: 218-237-3333 | fax:218-237-3377



\$135,900
MLS 7081385 Lake Land
TBD Heather Trail
Nevis MN 56467