



MLS 7081475 Residential

\$389,900

2,420 sq ft
3 bedrooms
2 baths

1408 Hilton Road
Little Falls MN 56345

Status: Active

Description:

Welcome to this well-maintained 3-bedroom, 2-bathroom home situated on nearly an acre in a desirable location! Backing directly up to the golf course, this property offers beautiful views and a peaceful setting while still being conveniently close to everything you need. Inside you'll find a spacious and functional layout, featuring a walkout basement with hookup for a wet bar already in place. Step outside to enjoy the deck overlooking the backyard, ideal for relaxing or hosting. You'll appreciate the spacious shed for all your outdoor essentials. To top things off, the furnace and central air conditioner are both less than a year old, giving you piece of mind. Whether you're looking for more space, a fantastic location, or a home with great potential to make your own, this property checks all the boxes. Schedule your showing today!

Additional Details:

| | |
|------------------------|---------|
| Year Built | 1987 |
| Lot Acres | 0.92 |
| Lot Dimensions | 208x218 |
| Garage Stalls | 4 |
| School District | 482 |
| Taxes | \$4,804 |
| Taxes with Assessments | \$4,804 |
| Tax Year | 2026 |

Additional Features:

Basement: Egress Window(s), Finished, Full, Walkout **Fuel:** Natural Gas **Garage:** 4 **Heat:** Forced Air **Sewer:** City Sewer/Connected **Water:** City Water - In Street, Well **Air Conditioning:** Central Air

Driving Directions:

1408 Hilton Road Little Falls



Listed By:
RE/MAX Central MN

Affinity Real Estate Inc. participates in the Regional Multiple Listing Service of Minnesota, Inc Broker Reciprocity (sm) program, allowing us to display other broker's listings on our website. All properties are subject to prior sale, change or withdrawal.



Call Affinity Real Estate

218-237-3333

info@affinityrealestate.com



Affinity Real Estate - 600 Park Avenue South - Park Rapids MN 56470



website: www.AffinityRealEstate.com | email: info@affinityrealestate.com | office: 218-237-3333 | fax:218-237-3377

Affinity
REAL ESTATE INC

\$389,900
MLS 7081475 Residential
1408 Hilton Road
Little Falls MN 56345



website: www.AffinityRealEstate.com | email: info@affinityrealestate.com | office: 218-237-3333 | fax:218-237-3377

Affinity
REAL ESTATE INC

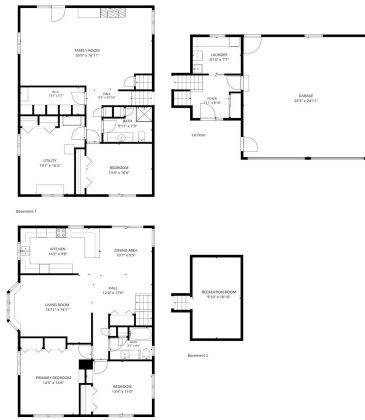
\$389,900
MLS 7081475 Residential
1408 Hilton Road
Little Falls MN 56345



website: www.AffinityRealEstate.com | email: info@affinityrealestate.com | office: 218-237-3333 | fax:218-237-3377



\$389,900
MLS 7081475 Residential
1408 Hilton Road
Little Falls MN 56345



TOTAL: 2448 sq. ft.
 Basement 2: 176 sq. ft. Basement 1: 1033 sq. ft. 1st floor: 188 sq. ft. 2nd floor: 1051 sq. ft.
 EXCLUDED AREAS: GARAGE: 634 sq. ft. WALLS: 239 sq. ft.

website: www.AffinityRealEstate.com | email: info@affinityrealestate.com | office: 218-237-3333 | fax: 218-237-3377



\$389,900
 MLS 7081475 Residential
 1408 Hilton Road
 Little Falls MN 56345