



MLS 7081497 Lake Land

\$199,000

Description:

Stop dreaming about a lake view and start living with actual lake frontage! ??

Unlike other developments, there are no hidden regulations here. You have the freedom to start with a shed and grow into your forever lake home over time. These properties were truly designed with you in mind, each featuring about 200 feet of beautiful waterfront. Best of all, you're just a quick, convenient Highway 10 drive from Perham, Frazee, Mills, and Detroit Lakes.

DNR restrictions do apply with a 200-foot setback.

Additional Details:

Lot Acres	7.32
Lot Dimensions	1275 x 200
School District	549
Taxes	\$1,228
Taxes with Assessments	(unreported)
Tax Year	2027

Additional Features:

Driving Directions:

From Perham, west on Hwy 10 to 460th St.



Listed By:
eXp Realty

Affinity Real Estate Inc. participates in the Regional Multiple Listing Service of Minnesota, Inc Broker Reciprocity (sm) program, allowing us to display other broker's listings on our website. All properties are subject to prior sale, change or withdrawal.



Call Affinity Real Estate

218-237-3333

info@affinityrealestate.com



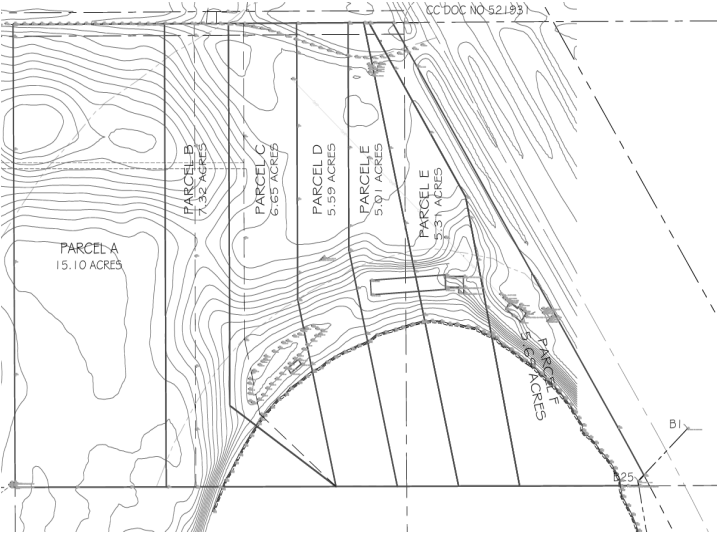
Affinity Real Estate - 600 Park Avenue South - Park Rapids MN 56470



website: www.AffinityRealEstate.com | email: info@affinityrealestate.com | office: 218-237-3333 | fax:218-237-3377



\$199,000
MLS 7081497 Lake Land
Parcel B 460TH ST
Perham MN 56573



website: www.AffinityRealEstate.com | email: info@affinityrealestate.com | office: 218-237-3333 | fax: 218-237-3377



\$199,000
 MLS 7081497 Lake Land
 Parcel B 460TH ST
 Perham MN 56573



website: www.AffinityRealEstate.com | email: info@affinityrealestate.com | office: 218-237-3333 | fax:218-237-3377



\$199,000
MLS 7081497 Lake Land
Parcel B 460TH ST
Perham MN 56573