



MLS 7081597 Lake Land

\$189,000

Description:

Don't just look at the water—own it.

Skip the restrictive HOAs and hidden covenants. This new development gives you total control over your property, allowing you to start with a simple shed and build your dream lake home whenever you're ready. With roughly 200 feet of prime shoreline per lot, these properties offer the space and freedom you've been searching for. Don't miss out on the perfect location, situated just a fast Highway 10 drive from Perham, Frazee, Mills, and Detroit Lakes.

Additional Details:

Lot Acres	6.65
Lot Dimensions	1100 x 200
School District	549
Taxes	(unreported)
Taxes with Assessments	(unreported)
Tax Year	2026

Additional Features:

Driving Directions:

From Perham, west on Hwy 10 to 460th St.



Listed By:
eXp Realty

Affinity Real Estate Inc. participates in the Regional Multiple Listing Service of Minnesota, Inc Broker Reciprocity (sm) program, allowing us to display other broker's listings on our website. All properties are subject to prior sale, change or withdrawal.



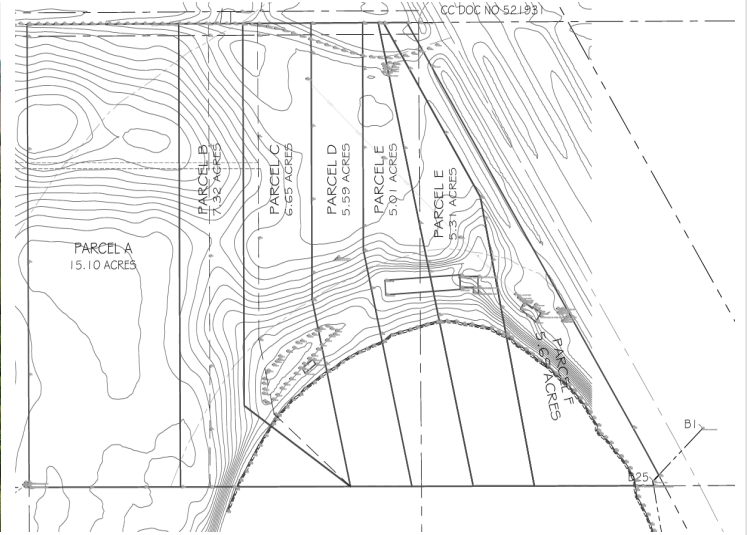
Call Affinity Real Estate

218-237-3333

info@affinityrealestate.com



Affinity Real Estate - 600 Park Avenue South - Park Rapids MN 56470



website: www.AffinityRealEstate.com | email: info@affinityrealestate.com | office: 218-237-3333 | fax:218-237-3377



\$189,000
MLS 7081597 Lake Land
Lot C 460TH ST
Perham MN 56573



website: www.AffinityRealEstate.com | email: info@affinityrealestate.com | office: 218-237-3333 | fax:218-237-3377



\$189,000
MLS 7081597 Lake Land
Lot C 460TH ST
Perham MN 56573



website: www.AffinityRealEstate.com | email: info@affinityrealestate.com | office: 218-237-3333 | fax:218-237-3377



\$189,000
MLS 7081597 Lake Land
Lot C 460TH ST
Perham MN 56573