



MLS 7081608 Land

**\$149,000**

11.3 Acres  
Raw Land

Lot I Sandbar Lane  
Merrifield MN 56465

Status: Active

**Description:**

Tucked away near Horseshoe Lake, this beautiful 10-acre parcel offers the perfect blend of privacy and natural surroundings. Located on a quiet dead-end road with plenty of room to build your dream home, cabin, or Northwoods retreat. Enjoy the peaceful setting while still being close to area lakes and outdoor recreation. Additional acreage available.

**Additional Details:**

Lot Acres	11.3
Lot Dimensions	669x750x669x743
School District	182
Taxes	\$412
Taxes with Assessments	\$412
Tax Year	2026

**Additional Features:**

**Driving Directions:**

South on County Rd 3 at Cty rd 3 and County Rd 11 round about to left on North Horseshoe Lake Rd to just past 13884 N Horseshoe Lake Road or property on left



Listed By:  
Dane Arthur Real Estate Agency-Crosslake

Affinity Real Estate Inc. participates in the Regional Multiple Listing Service of Minnesota, Inc Broker Reciprocity (sm) program, allowing us to display other broker's listings on our website. All properties are subject to prior sale, change or withdrawal.



**Call Affinity Real Estate**

**218-237-3333**

**info@affinityrealestate.com**



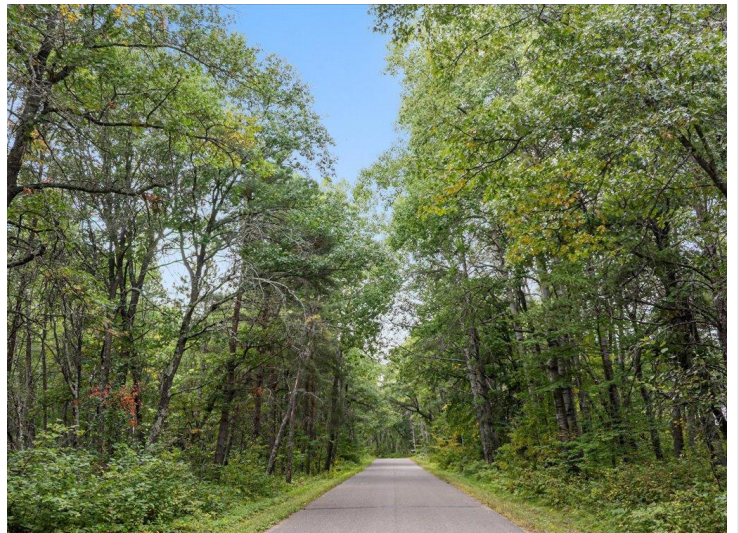
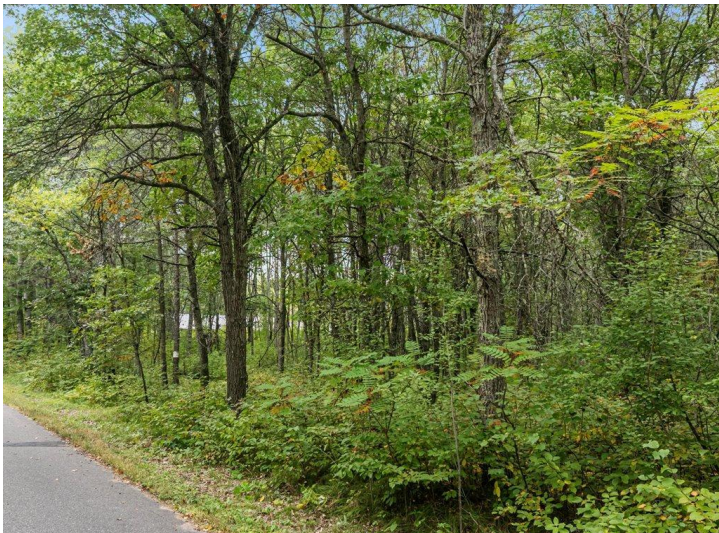
**Affinity Real Estate - 600 Park Avenue South - Park Rapids MN 56470**



website: [www.AffinityRealEstate.com](http://www.AffinityRealEstate.com) | email: [info@affinityrealestate.com](mailto:info@affinityrealestate.com) | office: 218-237-3333 | fax:218-237-3377



**\$149,000**  
MLS 7081608 Land  
Lot I Sandbar Lane  
Merrifield MN 56465



website: [www.AffinityRealEstate.com](http://www.AffinityRealEstate.com) | email: [info@affinityrealestate.com](mailto:info@affinityrealestate.com) | office: 218-237-3333 | fax:218-237-3377



**\$149,000**  
MLS 7081608 Land  
Lot I Sandbar Lane  
Merrifield MN 56465



website: [www.AffinityRealEstate.com](http://www.AffinityRealEstate.com) | email: [info@affinityrealestate.com](mailto:info@affinityrealestate.com) | office: 218-237-3333 | fax:218-237-3377



**\$149,000**  
MLS 7081608 Land  
Lot I Sandbar Lane  
Merrifield MN 56465