



MLS 7081670 Residential

**\$299,900**

1,848 sq ft  
4 bedrooms  
1 baths

113 Parke Avenue  
Glyndon MN 56547

Status: Active

**Description:**

Charming 2-story character home in Glyndon, MN! This beautifully updated 4-bedroom, 1-bath home combines timeless character with modern improvements throughout. New roof on 5/28/2026! The renovated kitchen features new cabinetry, countertops, and stainless-steel appliances. Enjoy fresh paint, updated flooring, updated lighting fixtures and new trim throughout the home. A spacious mudroom and separate laundry room add everyday convenience. Outside, you'll find a welcoming front porch, oversized 2-stall garage, newly poured concrete driveway and sidewalks, and a fully fenced backyard perfect for pets, play, or entertaining. Additional updates include electrical improvements and a professionally modified crawlspace and foundation for added peace of mind. Move-in ready with quality updates already completed—don't miss this fantastic opportunity in Glyndon!

**Additional Details:**

Year Built	1900
Lot Acres	0.31
Lot Dimensions	75x140
Garage Stalls	2
School District	2164
Taxes	\$2,767
Taxes with Assessments	\$3,890
Tax Year	2026

**Additional Features:**

**Basement:** Crawl Space **Fuel:** Natural Gas **Garage:** 2 **Heat:** Forced Air **Sewer:** City Sewer/Connected **Water:** City Water/Connected **Air Conditioning:** Central Air

**Driving Directions:**

From hwy 10 turn south on Parke Ave. on west side of the street.



Listed By:  
Park Co., REALTORS®

Affinity Real Estate Inc. participates in the Regional Multiple Listing Service of Minnesota, Inc Broker Reciprocity (sm) program, allowing us to display other broker's listings on our website. All properties are subject to prior sale, change or withdrawal.



Call Affinity Real Estate

**218-237-3333**

[info@affinityrealestate.com](mailto:info@affinityrealestate.com)



Affinity Real Estate - 600 Park Avenue South - Park Rapids MN 56470



website: [www.AffinityRealEstate.com](http://www.AffinityRealEstate.com) | email: [info@affinityrealestate.com](mailto:info@affinityrealestate.com) | office: 218-237-3333 | fax: 218-237-3377

**Affinity**  
REAL ESTATE INC

**\$299,900**  
MLS 7081670 Residential  
113 Parke Avenue  
Glyndon MN 56547



website: [www.AffinityRealEstate.com](http://www.AffinityRealEstate.com) | email: [info@affinityrealestate.com](mailto:info@affinityrealestate.com) | office: 218-237-3333 | fax: 218-237-3377

**Affinity**  
REAL ESTATE INC

**\$299,900**  
MLS 7081670 Residential  
113 Parke Avenue  
Glyndon MN 56547



website: [www.AffinityRealEstate.com](http://www.AffinityRealEstate.com) | email: [info@affinityrealestate.com](mailto:info@affinityrealestate.com) | office: 218-237-3333 | fax:218-237-3377



**\$299,900**  
MLS 7081670 Residential  
113 Parke Avenue  
Glyndon MN 56547



website: [www.AffinityRealEstate.com](http://www.AffinityRealEstate.com) | email: [info@affinityrealestate.com](mailto:info@affinityrealestate.com) | office: 218-237-3333 | fax:218-237-3377



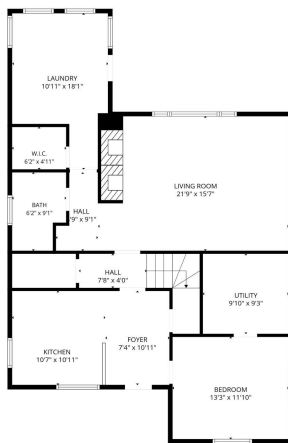
**\$299,900**  
MLS 7081670 Residential  
113 Parke Avenue  
Glyndon MN 56547



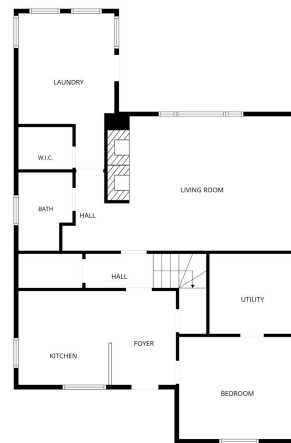
website: [www.AffinityRealEstate.com](http://www.AffinityRealEstate.com) | email: [info@affinityrealestate.com](mailto:info@affinityrealestate.com) | office: 218-237-3333 | fax:218-237-3377

**Affinity**  
REAL ESTATE INC

**\$299,900**  
MLS 7081670 Residential  
113 Parke Avenue  
Glyndon MN 56547



FLOOR PLAN CREATED BY CUBICASA APP. MEASUREMENTS DEEMED HIGHLY RELIABLE BUT NOT GUARANTEED.

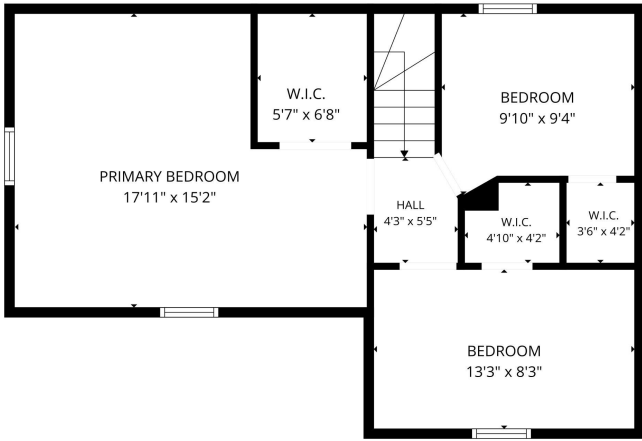


FLOOR PLAN CREATED BY CUBICASA APP. MEASUREMENTS DEEMED HIGHLY RELIABLE BUT NOT GUARANTEED.

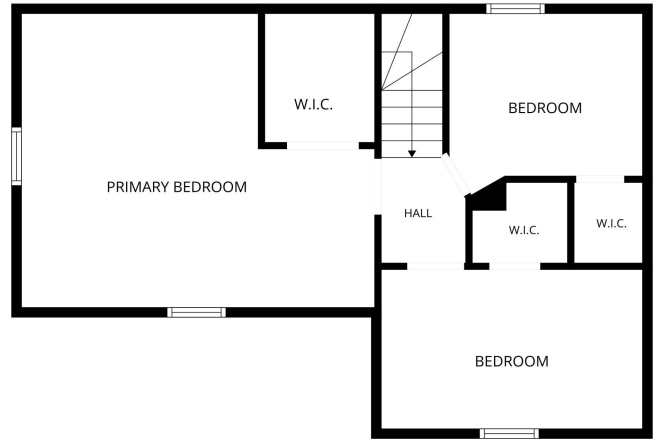
website: [www.AffinityRealEstate.com](http://www.AffinityRealEstate.com) | email: [info@affinityrealestate.com](mailto:info@affinityrealestate.com) | office: 218-237-3333 | fax:218-237-3377



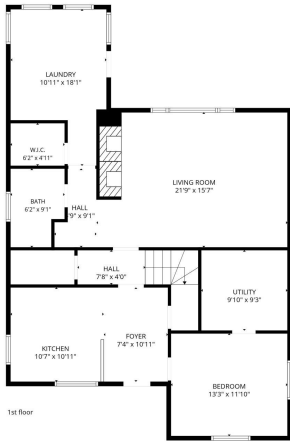
**\$299,900**  
 MLS 7081670 Residential  
 113 Parke Avenue  
 Glyndon MN 56547



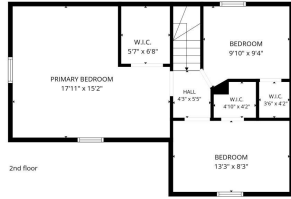
FLOOR PLAN CREATED BY CUBICASA APP. MEASUREMENTS DEEMED HIGHLY RELIABLE BUT NOT GUARANTEED.



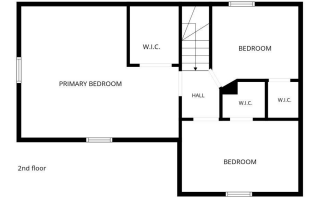
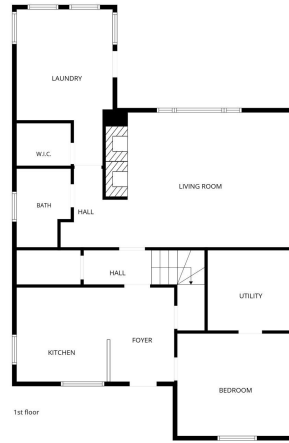
FLOOR PLAN CREATED BY CUBICASA APP. MEASUREMENTS DEEMED HIGHLY RELIABLE BUT NOT GUARANTEED.



FLOOR PLAN CREATED BY CUBICASA APP. MEASUREMENTS DEEMED HIGHLY RELIABLE BUT NOT GUARANTEED.



FLOOR PLAN CREATED BY CUBICASA APP. MEASUREMENTS DEEMED HIGHLY RELIABLE BUT NOT GUARANTEED.



website: [www.AffinityRealEstate.com](http://www.AffinityRealEstate.com) | email: [info@affinityrealestate.com](mailto:info@affinityrealestate.com) | office: 218-237-3333 | fax:218-237-3377



**\$299,900**  
 MLS 7081670 Residential  
 113 Parke Avenue  
 Glyndon MN 56547