



MLS 7081676 Lake Home

\$499,900

2,880 sq ft
4 bedrooms
3 baths

32951 Dahlberg Lake Road
Shevlin MN 56676

Waterfront: Dahlberg

Status: Active

Description:

A TRUE NORTHWOODS CLASSIC!!! Log home on a lake with acreage!!! 4-bedroom-3 bath "Minnesota Log Home" on very private Dahlberg Lake boasting 14 acres of privacy and over 1,600 feet of frontage! Dahlberg is a very scenic private lake with no public access and only two other places on the lake. Moose Creek runs through the lake and offers some great fishing for giant sunfish and crappies, northern, bass, and a few walleye! The home is very inviting with the covered front porch and numerous windows offering great views of the lake. The open LR-DR-Kitchen further accentuates the large, vaulted ceiling and exposed beams! There is a huge screened-in porch along with a lakeside deck to highlight the lake views. The loft area makes an awesome primary suite with its own 1/2 bath and lots of closet space. The main floor and lower-level bathrooms showcase new tile showers with waterfall shower systems. Spoil yourself in the lower-level patio hot tub offering views of the lake! Other perks of the home include an enormous pantry, several storage closets, hardwood floors in the LR, a new propane boiler, a water heater, and a water softener. There's plenty of room for your vehicles and toys in the insulated/heated 28' x 48' garage. A couple of bonus storage sheds and a playset make things complete! Adjacent 6.99-acre lot with approx. 230' frontage available for an additional \$79,900.

Additional Details:

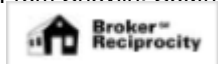
Year Built	1989
Lot Acres	14
Lot Dimensions	irregular
Garage Stalls	4
School District	162
Taxes	\$2,718
Taxes with Assessments	\$2,718
Tax Year	2026

Additional Features:

Basement: Finished, Full, Walkout **Fuel:** Electric, Propane **Garage:** 4 **Heat:** Baseboard, Fireplace(s), Hot Water **Sewer:** Private Sewer, Tank with Drainage Field **Water:** 4-Inch Submersible, Drilled, Private, Well **Air Conditioning:** Ductless Mini-Split

Driving Directions:

From Shevlin. South on County Rd 2 for 3 1/2 miles, right on 330th Street 1/2 mile, right on Dahlberg Lake on the right.



Listed By:
Realty Experts, LLC

Affinity Real Estate Inc. participates in the Regional Multiple Listing Service of Minnesota, Inc Broker Reciprocity (sm) program, allowing us to display other broker's listings on our website. All properties are subject to prior sale, change or withdrawal.



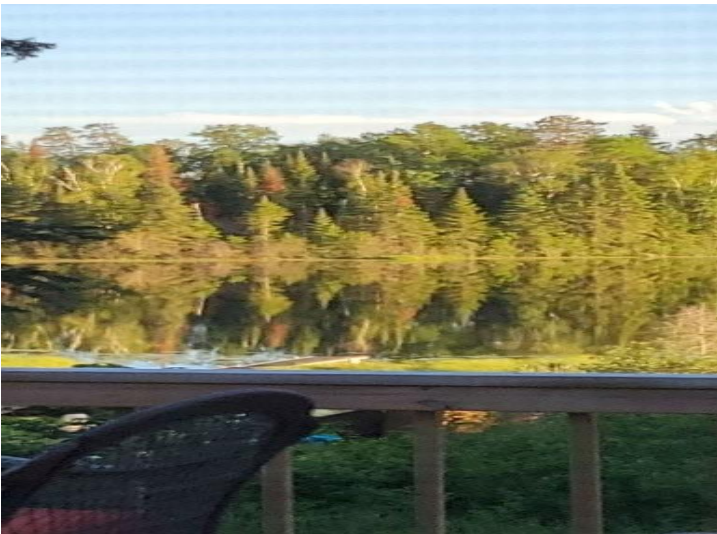
Call Affinity Real Estate

218-237-3333

info@affinityrealestate.com



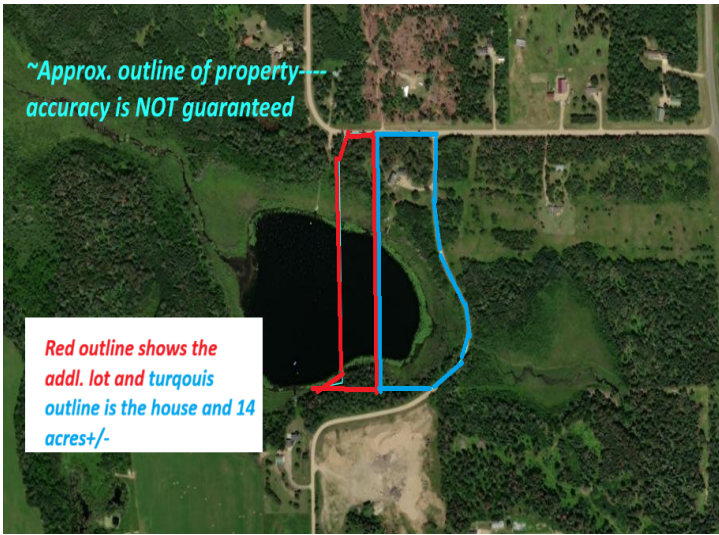
Affinity Real Estate - 600 Park Avenue South - Park Rapids MN 56470



website: www.AffinityRealEstate.com | email: info@affinityrealestate.com | office: 218-237-3333 | fax:218-237-3377



\$499,900
MLS 7081676 Lake Home
32951 Dahlberg Lake Road
Shevlin MN 56676



website: www.AffinityRealEstate.com | email: info@affinityrealestate.com | office: 218-237-3333 | fax:218-237-3377



\$499,900
MLS 7081676 Lake Home
32951 Dahlberg Lake Road
Shevlin MN 56676



website: www.AffinityRealEstate.com | email: info@affinityrealestate.com | office: 218-237-3333 | fax:218-237-3377

Affinity
REAL ESTATE INC

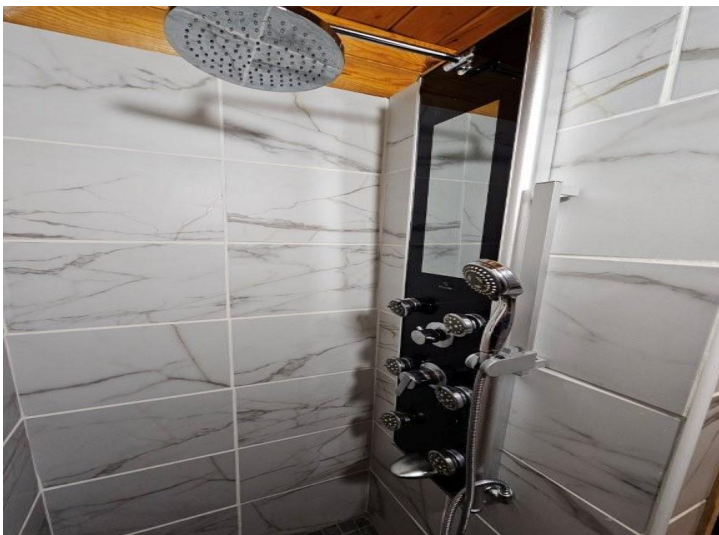
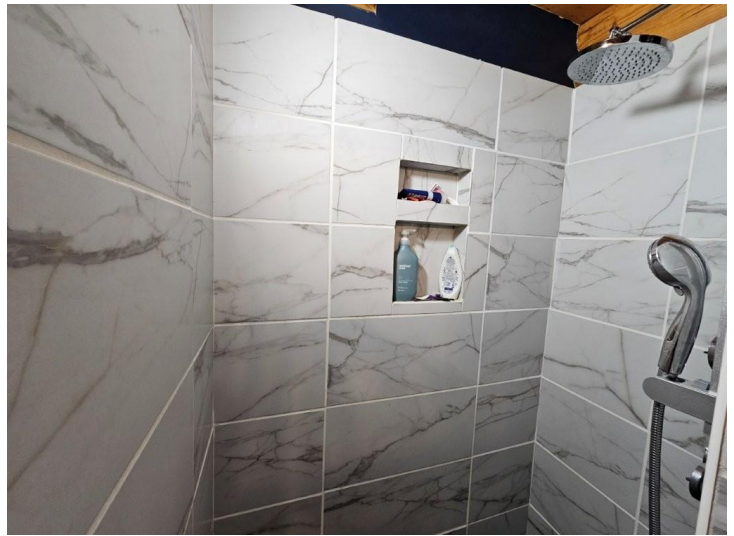
\$499,900
MLS 7081676 Lake Home
32951 Dahlberg Lake Road
Shevlin MN 56676



website: www.AffinityRealEstate.com | email: info@affinityrealestate.com | office: 218-237-3333 | fax:218-237-3377

Affinity
REAL ESTATE INC

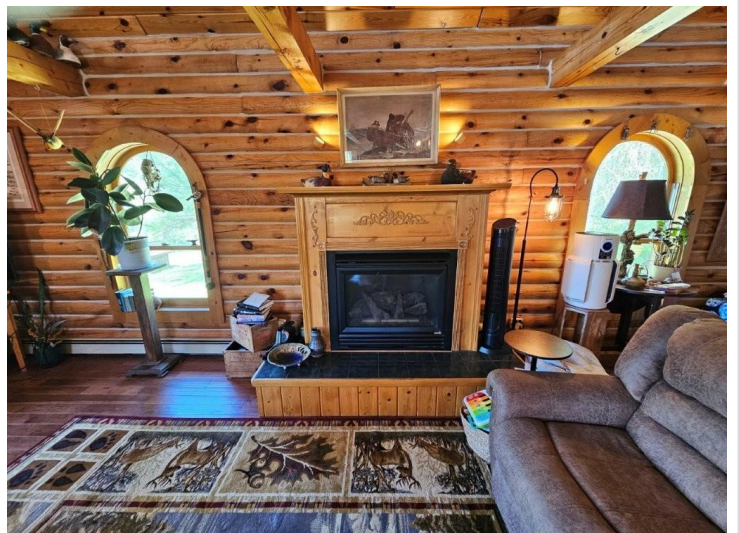
\$499,900
MLS 7081676 Lake Home
32951 Dahlberg Lake Road
Shevlin MN 56676



website: www.AffinityRealEstate.com | email: info@affinityrealestate.com | office: 218-237-3333 | fax: 218-237-3377

Affinity
REAL ESTATE INC

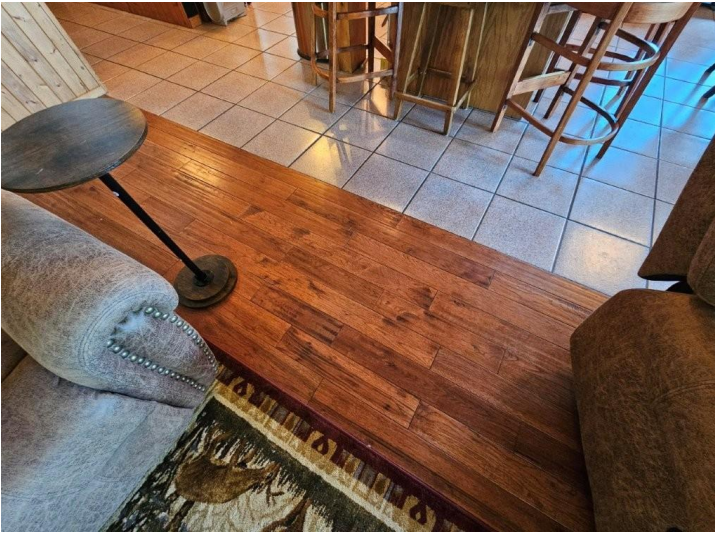
\$499,900
MLS 7081676 Lake Home
32951 Dahlberg Lake Road
Shevlin MN 56676



website: www.AffinityRealEstate.com | email: info@affinityrealestate.com | office: 218-237-3333 | fax: 218-237-3377

Affinity
REAL ESTATE INC

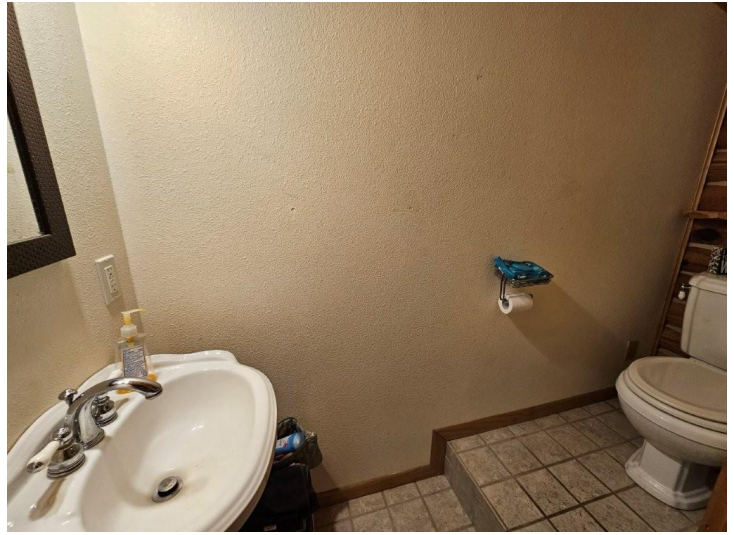
\$499,900
MLS 7081676 Lake Home
32951 Dahlberg Lake Road
Shevlin MN 56676



website: www.AffinityRealEstate.com | email: info@affinityrealestate.com | office: 218-237-3333 | fax:218-237-3377

Affinity
REAL ESTATE INC

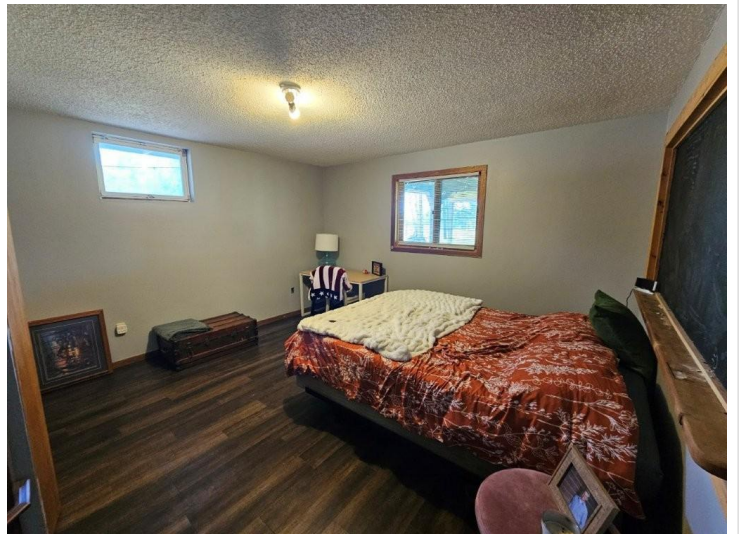
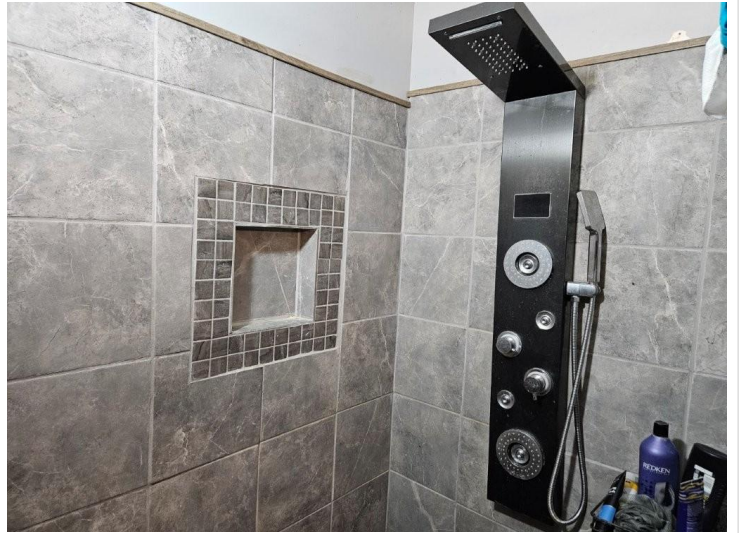
\$499,900
MLS 7081676 Lake Home
32951 Dahlberg Lake Road
Shevlin MN 56676



website: www.AffinityRealEstate.com | email: info@affinityrealestate.com | office: 218-237-3333 | fax:218-237-3377

Affinity
REAL ESTATE INC

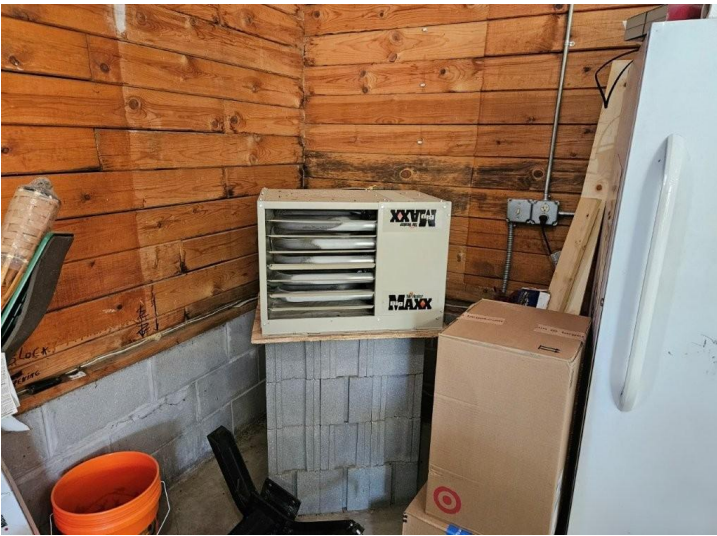
\$499,900
MLS 7081676 Lake Home
32951 Dahlberg Lake Road
Shevlin MN 56676



website: www.AffinityRealEstate.com | email: info@affinityrealestate.com | office: 218-237-3333 | fax:218-237-3377



\$499,900
MLS 7081676 Lake Home
32951 Dahlberg Lake Road
Shevlin MN 56676



website: www.AffinityRealEstate.com | email: info@affinityrealestate.com | office: 218-237-3333 | fax: 218-237-3377



\$499,900
MLS 7081676 Lake Home
32951 Dahlberg Lake Road
Shevlin MN 56676