



MLS 7081866 Lake Home

\$200,000

580 sq ft
1 bedrooms
1 baths

15827 Wilderness Trail
Crosslake MN 56442

Waterfront: Little Pine Lake
(Crosslake City)

Status: Active

Description:

This beautiful open floor plan park model sits on a large back row lot, comes fully furnished and includes a boat slip, golf cart, storage shed, and a spacious 12 x 30 garage. You'll love all the natural light of living space surrounded by windows, lots of good kitchen cabinet space, vaulted ceilings, upgrades and two separate loft sleeping areas. You'll be in ah by the spacious patio and bonfire pit area backing up to the woods and lots of privacy in the back row and good parking space. The park offers a wide range of amenities such as a pickleball, tennis, basketball and volleyball courts, outdoor heated swimming pool, swimming beach, private boat landing, storm shelter, fish cleaning house, onsite laundry, horseshoe pits, play ground, shower house, wood shop, car/boat wash station and the. Whitefish Chain steps away. It's the perfect place for those who enjoy outdoor activities and a vibrant community. Don't miss this incredible opportunity.

Additional Details:

Year Built	2005
Garage Stalls	1
School District	186
Taxes	\$220
Taxes with Assessments	\$220
Tax Year	2026

Additional Features:

Basement: None **Fuel:** Electric, Propane **Garage:** 1 **Heat:** Forced Air, Fireplace(s) **Sewer:** Private Sewer, Shared Septic, Tank with Drainage Field **Water:** Drilled, Private, Shared System **Air Conditioning:** Central Air, Wall Unit(s)

Driving Directions:

From Crosslake N on 66 to Right on Daggett Pine to Left on Wilderness Trail to lot #137



Listed By:
Dane Arthur Real Estate Agency-Crosslake

Affinity Real Estate Inc. participates in the Regional Multiple Listing Service of Minnesota, Inc Broker Reciprocity (sm) program, allowing us to display other broker's listings on our website. All properties are subject to prior sale, change or withdrawal.



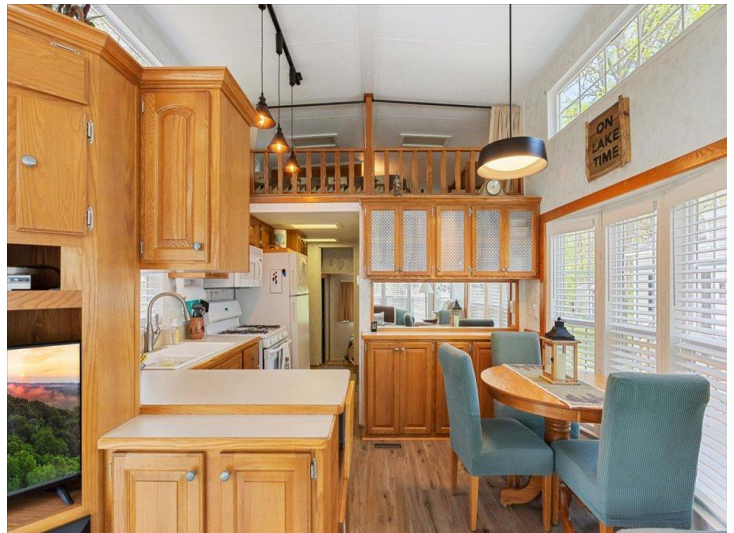
Call Affinity Real Estate

218-237-3333

info@affinityrealestate.com



Affinity Real Estate - 600 Park Avenue South - Park Rapids MN 56470



website: www.AffinityRealEstate.com | email: info@affinityrealestate.com | office: 218-237-3333 | fax: 218-237-3377

Affinity
REAL ESTATE INC

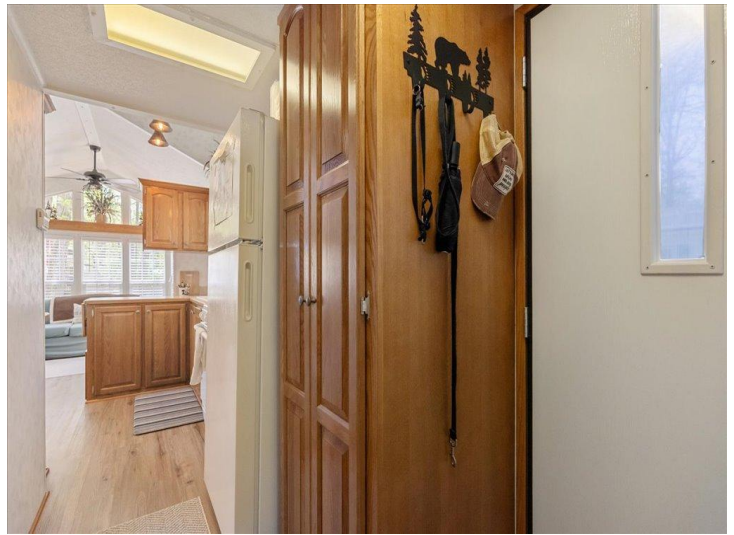
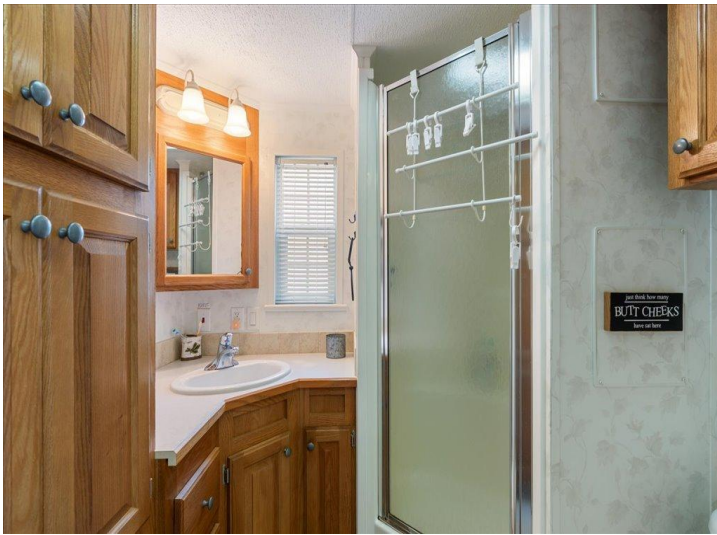
\$200,000
MLS 7081866 Lake Home
15827 Wilderness Trail
Crosslake MN 56442



website: www.AffinityRealEstate.com | email: info@affinityrealestate.com | office: 218-237-3333 | fax: 218-237-3377

Affinity
REAL ESTATE INC

\$200,000
MLS 7081866 Lake Home
15827 Wilderness Trail
Crosslake MN 56442



website: www.AffinityRealEstate.com | email: info@affinityrealestate.com | office: 218-237-3333 | fax:218-237-3377



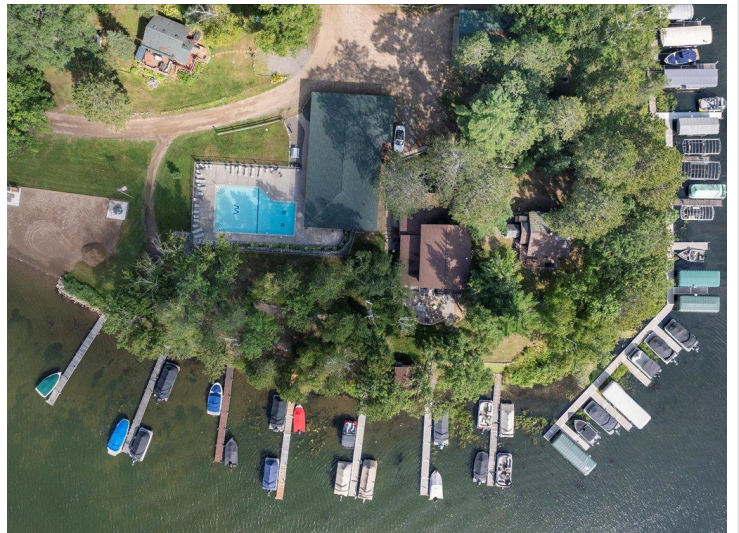
\$200,000
MLS 7081866 Lake Home
15827 Wilderness Trail
Crosslake MN 56442



website: www.AffinityRealEstate.com | email: info@affinityrealestate.com | office: 218-237-3333 | fax:218-237-3377

Affinity
REAL ESTATE INC

\$200,000
MLS 7081866 Lake Home
15827 Wilderness Trail
Crosslake MN 56442



website: www.AffinityRealEstate.com | email: info@affinityrealestate.com | office: 218-237-3333 | fax: 218-237-3377

Affinity
REAL ESTATE INC

\$200,000
MLS 7081866 Lake Home
15827 Wilderness Trail
Crosslake MN 56442



website: www.AffinityRealEstate.com | email: info@affinityrealestate.com | office: 218-237-3333 | fax:218-237-3377



\$200,000
MLS 7081866 Lake Home
15827 Wilderness Trail
Crosslake MN 56442