



MLS 7081934 Commercial

**\$176,000**

24247 BASS HARBOR Trail  
Pelican Rapids MN 56572

Status: Active

**Description:**

Unit 07 - Premium Storage Unit Between Lake Lida & Lake Lizzie

Located in a prime corridor with direct access from County Road 4, this high-quality storage unit offers an ideal solution for your lake toys, vehicles, or personal storage needs. Each unit includes the lot, site preparation, and an exterior shell with 16' sidewalls and a 14'x14' insulated overhead door. A 5' canopy provides added weather protection over the service door.

This upgraded unit includes stubbed-in water access and is allows for a private holding tank within the parcel. Holding tank installation and ongoing maintenance are the responsibility of the owner, allowing added flexibility and utility potential for future use.

Built to last, these units feature factory-engineered truss rafters with a 4/12 roof pitch, black steel wainscoting for a clean, finished look, and a 5" concrete slab with an oversized apron for easy access and maneuvering.

Yearly HOA fees and taxes TBD.


Standard features:

- (1) 3' insulated steel walk-in door
- (3) 3'x3' stationary windows
- 200-amp electrical panel and outlet are included. Additional electrical service capacity is available as an upgrade.
- Utility-ready with water stubbed in

Optional upgrade packages:

- Insulation Package
- HVAC Package
- Electrical Package
- Bathroom/Water Package

Yearly HOA fees and taxes TBD. Units are intended for storage purposes only. Living quarters are not permitted.

	
<p>Includes common area and driveway maintenance, debris removal. Current property tax amounts do not include building improvements. Final taxes and fees to be determined by the county.</p>	<p>Year Built: 2025 Lot Acres: 0.08</p>
<p><b>Additional Details:</b></p> <p>Affinity Real Estate Inc. participates in the Regional Multiple Listing Service of Minnesota, Inc Broker Reciprocity (sm) program, allowing us to display other broker's listings on our website. All properties are subject to prior sale, change or withdrawal.</p>	<p>Lot Dimensions: 36x100 School District: 548 Taxes: (unreported)</p>



**Call Affinity Real Estate**

**218-237-3333**

**info@affinityrealestate.com**



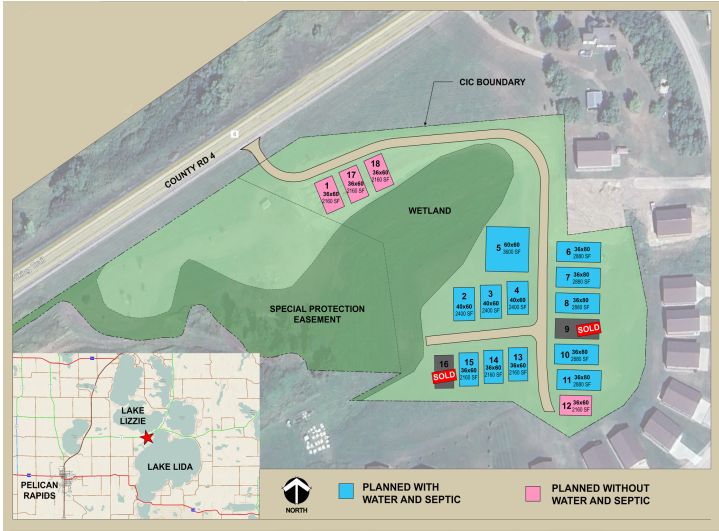
**Affinity Real Estate - 600 Park Avenue South - Park Rapids MN 56470**



Rendering - Final design subject to change



Rendering - Final design subject to change



website: [www.AffinityRealEstate.com](http://www.AffinityRealEstate.com) | email: [info@affinityrealestate.com](mailto:info@affinityrealestate.com) | office: 218-237-3333 | fax: 218-237-3377



**\$176,000**  
 MLS 7081934 Commercial  
 24247 BASS HARBOR Trail  
 Pelican Rapids MN 56572