



MLS 7081965 Commercial

\$149,800

24247 BASS HARBOR Trail
Pelican Rapids MN 56572

Status: Active

Description:

Unit 18 - Premium Storage Unit Between Lake Lida & Lake Lizzie

Located in a prime corridor with direct access from County Road 4, this high-quality storage unit offers an ideal solution for your lake toys, vehicles, or personal storage needs. Each unit includes the lot, site preparation, and an exterior shell with 13'-8" sidewalls and a 14'x14' insulated overhead door. A 5' canopy provides added weather protection over the service door.

Built to last, these units feature factory-engineered scissor trusses with a 3.5/12 roof pitch, black steel wainscoting for a clean, finished look, and a 5" concrete slab with an oversized apron for easy access and maneuvering.

Standard features:

- (1) 3' insulated steel walk-in door
- (3) 3'x3' stationary windows
- 200-amp electrical panel and outlet are included. Additional electrical service capacity is available as an upgrade.

Optional upgrade packages:

- Insulation Package
- HVAC Package
- Electrical Package

Units are intended for storage purposes only. Living quarters are not permitted.


Association fee includes common area and driveway maintenance plus snow removal.

Current property tax amounts do not reflect completed building improvements. Final taxes and assessments to be determined by the county.

Additional Details:

Year Built 2026
Lot Acres 0.05

Lot Dimensions 60x36


 Listed By 548
 Dakota Plains Realty
 (unreported)
 Affinity Real Estate Inc. participates in the Regional Multiple Listing
 Service of Minnesota, Inc Broker Reciprocity (sm) program, allowing
 Taxes with Assessments (unreported)
 Tax Year 2026
 to display other broker's listings on our website. All properties are
 subject to prior sale, change or withdrawal.



Call Affinity Real Estate
218-237-3333
info@affinityrealestate.com



Affinity Real Estate - 600 Park Avenue South - Park Rapids MN 56470

Additional Features:

Fuel: Other Heat: Other Sewer: None Water: None Minnesota - Brochure v.2019.05.23.2 - 216.73.217.60 - 2026.05.29 10:09:58

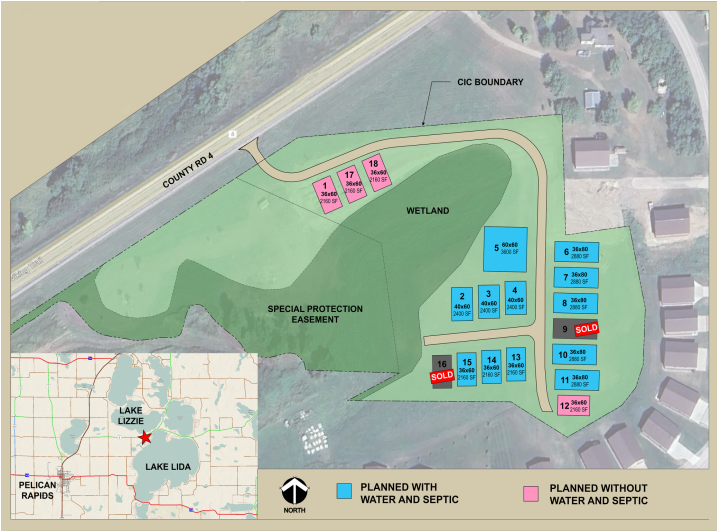
Driving Directions:



Rendering - Final design subject to change



Rendering - Final design subject to change



website: www.AffinityRealEstate.com | email: info@affinityrealestate.com | office: 218-237-3333 | fax: 218-237-3377



\$149,800
 MLS 7081965 Commercial
 24247 BASS HARBOR Trail
 Pelican Rapids MN 56572