



MLS 7082144 Land

\$79,900

1.29 Acres
Raw Land

TB County Road 16
Pequot Lakes MN 56472

Status: Active

Description:

Prime building pad on Whitefish Golf Course. This large 1.29 acre site is one of the last available. Sits with a slight roll to the land with an easterly exposure on the 14th Fairway. Neighborhood is complimented by adjoining homes on both sides with pride of ownership.

Additional Details:

Lot Acres	1.29
Lot Dimensions	150 x 375
School District	186
Taxes	\$320
Taxes with Assessments	\$320
Tax Year	2026

Additional Features:

Driving Directions:

From Pequot Lakes, go north on Hwy 371, then take a right on County Road 16 (at the A-Pine stoplight). Go approximately 5.1 miles, and the Larson Group sign will be on your right, just before the Whitefish Golf Club.



Listed By:
Larson Group Real Estate/Kelle

Affinity Real Estate Inc. participates in the Regional Multiple Listing Service of Minnesota, Inc Broker Reciprocity (sm) program, allowing us to display other broker's listings on our website. All properties are subject to prior sale, change or withdrawal.



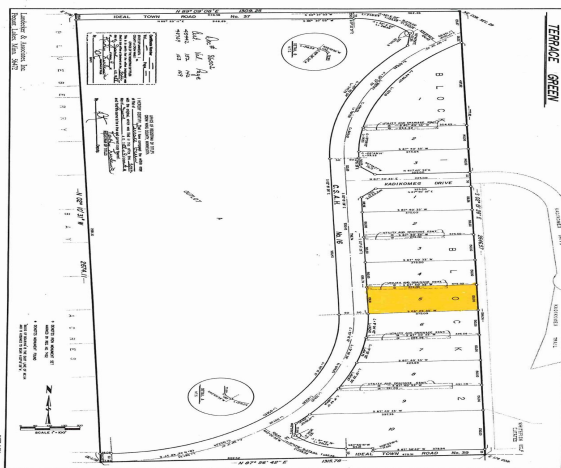
Call Affinity Real Estate

218-237-3333

info@affinityrealestate.com



Affinity Real Estate - 600 Park Avenue South - Park Rapids MN 56470



website: www.AffinityRealEstate.com | email: info@affinityrealestate.com | office: 218-237-3333 | fax: 218-237-3377



\$79,900
 MLS 7082144 Land
 TB County Road 16
 Pequot Lakes MN 56472



website: www.AffinityRealEstate.com | email: info@affinityrealestate.com | office: 218-237-3333 | fax:218-237-3377



\$79,900
MLS 7082144 Land
TB County Road 16
Pequot Lakes MN 56472