



MLS 7082490 Residential

**\$249,000**

1,408 sq ft  
3 bedrooms  
2 baths

21402 US Highway 169  
Grand Rapids MN 55744

Status: Active

**Description:**

Set on nearly 2 acres, this updated 3 bedroom, 1.5 bath home offers space and modern touches throughout. Fresh flooring, paint, and cabinetry give the interior a clean, move-in ready feel. The main level features an open, eat-in kitchen with center island, spacious living room, 2 bedrooms, 1.5 baths, and laundry area designed for easy one-level living. Upstairs provides flexible space for an additional bedroom, storage, office, or cozy hangout area. Outside, enjoy room to roam along with a detached 2-stall garage for vehicles, toys, and extra storage. A great opportunity to enjoy peaceful living on the outskirts of town while staying close to all the amenities Grand Rapids has to offer.

**Additional Details:**

Year Built	1953
Lot Acres	1.92
Lot Dimensions	330 x 250 x 330 x 254
Garage Stalls	2
School District	318
Taxes	\$959
Taxes with Assessments	\$1,040
Tax Year	2026

**Additional Features:**

**Basement:** None **Fuel:** Electric **Garage:** 2 **Heat:** Hot Water **Sewer:** Private Sewer, Septic System Compliant - No **Water:** Private **Air Conditioning:** None

**Driving Directions:**

Hwy 169 S to property on L



Listed By:  
COLDWELL BANKER NORTHWOODS

Affinity Real Estate Inc. participates in the Regional Multiple Listing Service of Minnesota, Inc Broker Reciprocity (sm) program, allowing us to display other broker's listings on our website. All properties are subject to prior sale, change or withdrawal.



Call Affinity Real Estate

**218-237-3333**

[info@affinityrealestate.com](mailto:info@affinityrealestate.com)



Affinity Real Estate - 600 Park Avenue South - Park Rapids MN 56470



website: [www.AffinityRealEstate.com](http://www.AffinityRealEstate.com) | email: [info@affinityrealestate.com](mailto:info@affinityrealestate.com) | office: 218-237-3333 | fax:218-237-3377



**\$249,000**  
MLS 7082490 Residential  
21402 US Highway 169  
Grand Rapids MN 55744



website: [www.AffinityRealEstate.com](http://www.AffinityRealEstate.com) | email: [info@affinityrealestate.com](mailto:info@affinityrealestate.com) | office: 218-237-3333 | fax:218-237-3377



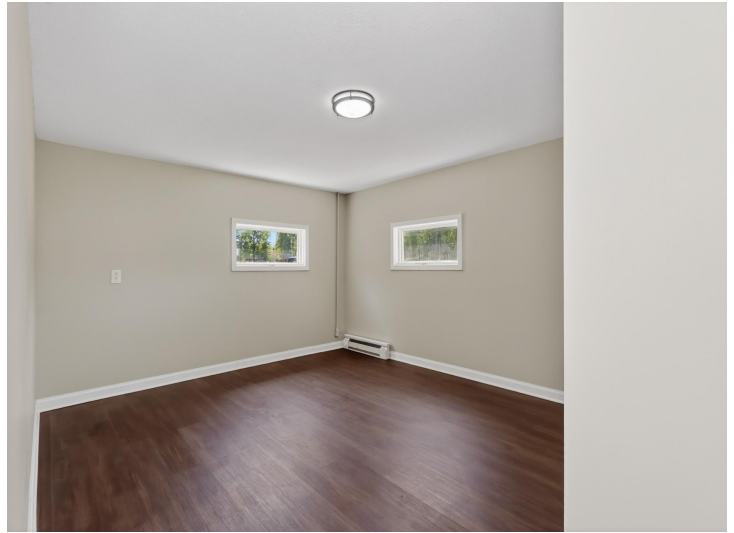
**\$249,000**  
MLS 7082490 Residential  
21402 US Highway 169  
Grand Rapids MN 55744



website: [www.AffinityRealEstate.com](http://www.AffinityRealEstate.com) | email: [info@affinityrealestate.com](mailto:info@affinityrealestate.com) | office: 218-237-3333 | fax:218-237-3377



**\$249,000**  
MLS 7082490 Residential  
21402 US Highway 169  
Grand Rapids MN 55744



website: [www.AffinityRealEstate.com](http://www.AffinityRealEstate.com) | email: [info@affinityrealestate.com](mailto:info@affinityrealestate.com) | office: 218-237-3333 | fax:218-237-3377

**Affinity**  
REAL ESTATE INC

**\$249,000**  
MLS 7082490 Residential  
21402 US Highway 169  
Grand Rapids MN 55744



website: [www.AffinityRealEstate.com](http://www.AffinityRealEstate.com) | email: [info@affinityrealestate.com](mailto:info@affinityrealestate.com) | office: 218-237-3333 | fax:218-237-3377

**Affinity**  
REAL ESTATE INC

**\$249,000**  
MLS 7082490 Residential  
21402 US Highway 169  
Grand Rapids MN 55744



website: [www.AffinityRealEstate.com](http://www.AffinityRealEstate.com) | email: [info@affinityrealestate.com](mailto:info@affinityrealestate.com) | office: 218-237-3333 | fax:218-237-3377



**\$249,000**  
MLS 7082490 Residential  
21402 US Highway 169  
Grand Rapids MN 55744