



MLS 7082491 Lake Home

\$294,900

780 sq ft
2 bedrooms
1 baths

56161 Whitefish Trail
Squaw Lake MN 56659

Waterfront: Whitefish

Status: Active

Description:

Nestled on a sprawling 4.7-acre canvas near Squaw Lake, MN, this enchanting cabin beckons those who crave the serenity of lakefront living. The cabin, a cozy haven, invites you to escape the ordinary and embrace the extraordinary. This 2-bedroom, 1-bath retreat, boasting 780 square feet of coziness. A hidden gem awaits in the form of a 2-car garage with an inviting bonus room upstairs, perfect for unwinding after a day on the lake. As you step onto the property, a harmonious blend of nature and comfort unfolds. The shoreline, a masterpiece in itself, offers a front-row seat to nature's symphony. Calling all fishing and hunting enthusiasts! Your private paradise is a gateway to walleye and crappie utopia. Cast your cares away as you reel in the thrill of the catch, creating memories that shimmer like the lake at sunset. You can also hunt 1000's of acres of National Forest Nearby. 4 wheeler and snowmobile trails are everywhere, come explore!

Additional Details:

Year Built	2004
Lot Acres	4.7
Lot Dimensions	35x759
Garage Stalls	2
School District	317
Taxes	\$1,952
Taxes with Assessments	\$1,952
Tax Year	2026

Additional Features:

Fuel: Electric **Heat:** In-Floor Heating

Driving Directions:

Head south from Squaw Lake on 46. Turn east one county road 4, then turn north on county road 4. Turn left on county road 127. Turn south on Whitefish Trail.



Listed By:
Blackduck Realty

Affinity Real Estate Inc. participates in the Regional Multiple Listing Service of Minnesota, Inc Broker Reciprocity (sm) program, allowing us to display other broker's listings on our website. All properties are subject to prior sale, change or withdrawal.



Call Affinity Real Estate

218-237-3333

info@affinityrealestate.com



Affinity Real Estate - 600 Park Avenue South - Park Rapids MN 56470



website: www.AffinityRealEstate.com | email: info@affinityrealestate.com | office: 218-237-3333 | fax:218-237-3377



\$294,900
MLS 7082491 Lake Home
56161 Whitefish Trail
Squaw Lake MN 56659



website: www.AffinityRealEstate.com | email: info@affinityrealestate.com | office: 218-237-3333 | fax:218-237-3377



\$294,900
MLS 7082491 Lake Home
56161 Whitefish Trail
Squaw Lake MN 56659



website: www.AffinityRealEstate.com | email: info@affinityrealestate.com | office: 218-237-3333 | fax:218-237-3377

Affinity
REAL ESTATE INC

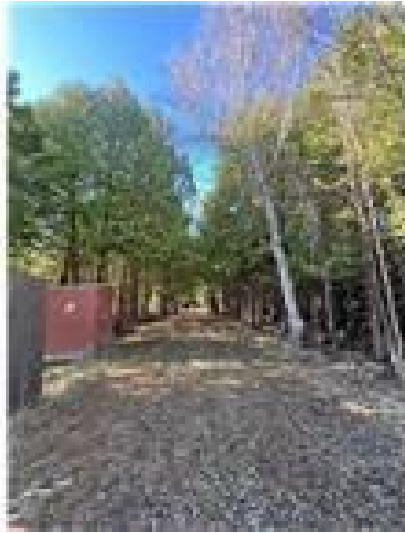
\$294,900
MLS 7082491 Lake Home
56161 Whitefish Trail
Squaw Lake MN 56659



website: www.AffinityRealEstate.com | email: info@affinityrealestate.com | office: 218-237-3333 | fax:218-237-3377



\$294,900
MLS 7082491 Lake Home
56161 Whitefish Trail
Squaw Lake MN 56659



website: www.AffinityRealEstate.com | email: info@affinityrealestate.com | office: 218-237-3333 | fax:218-237-3377



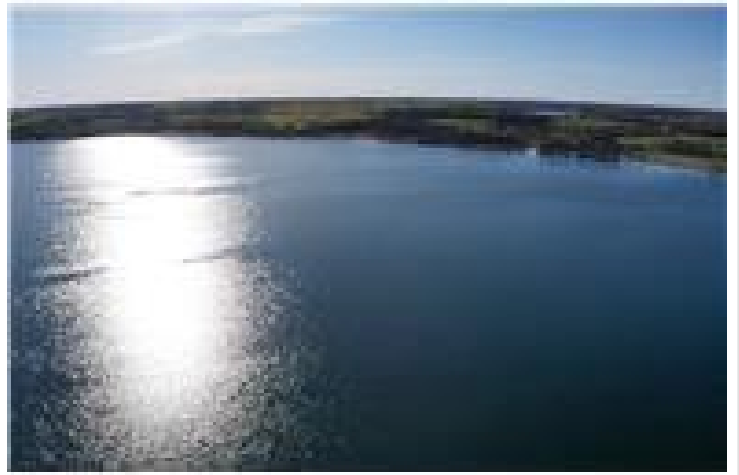
\$294,900
MLS 7082491 Lake Home
56161 Whitefish Trail
Squaw Lake MN 56659



website: www.AffinityRealEstate.com | email: info@affinityrealestate.com | office: 218-237-3333 | fax:218-237-3377



\$294,900
MLS 7082491 Lake Home
56161 Whitefish Trail
Squaw Lake MN 56659



website: www.AffinityRealEstate.com | email: info@affinityrealestate.com | office: 218-237-3333 | fax:218-237-3377

Affinity
REAL ESTATE INC

\$294,900
MLS 7082491 Lake Home
56161 Whitefish Trail
Squaw Lake MN 56659



website: www.AffinityRealEstate.com | email: info@affinityrealestate.com | office: 218-237-3333 | fax:218-237-3377

Affinity
REAL ESTATE INC

\$294,900
MLS 7082491 Lake Home
56161 Whitefish Trail
Squaw Lake MN 56659



website: www.AffinityRealEstate.com | email: info@affinityrealestate.com | office: 218-237-3333 | fax:218-237-3377



\$294,900
MLS 7082491 Lake Home
56161 Whitefish Trail
Squaw Lake MN 56659



website: www.AffinityRealEstate.com | email: info@affinityrealestate.com | office: 218-237-3333 | fax:218-237-3377



\$294,900

MLS 7082491 Lake Home
56161 Whitefish Trail
Squaw Lake MN 56659