



MLS 7082492 Lake Land

\$199,000

Description:

Why settle for a lake view only?

This premier new development offers true freedom with no hidden building restrictions. Start simple with a shed, or design your ultimate dream home from the ground up—the choice is entirely yours. Designed with your lifestyle in mind, each spacious lot boasts roughly 200 feet of pristine shoreline. Plus, you're just a quick drive down Highway 10 from Perham, Frazee, New York Mills, and Detroit Lakes.

Additional Details:

Lot Acres	5.59
Lot Dimensions	1100 x 200
School District	549
Taxes	(unreported)
Taxes with Assessments	(unreported)
Tax Year	2026

Additional Features:

Driving Directions:

From Perham, west on Hwy 10 to 460th St.



Listed By:
eXp Realty

Affinity Real Estate Inc. participates in the Regional Multiple Listing Service of Minnesota, Inc Broker Reciprocity (sm) program, allowing us to display other broker's listings on our website. All properties are subject to prior sale, change or withdrawal.



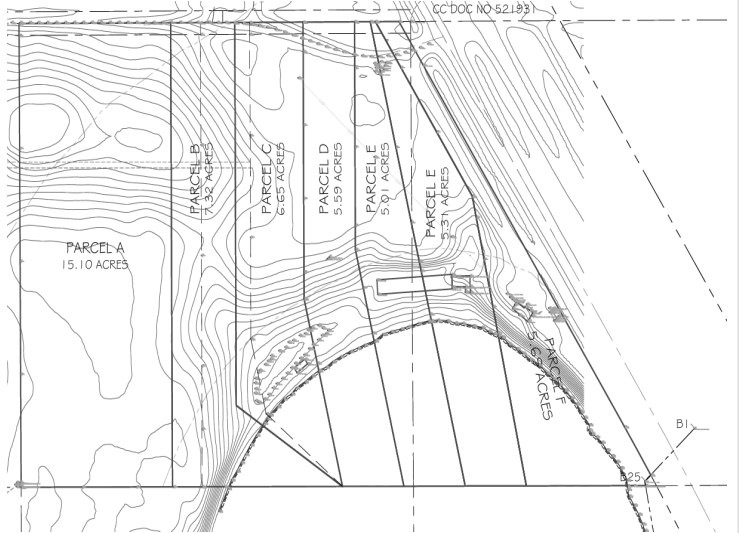
Call Affinity Real Estate

218-237-3333

info@affinityrealestate.com



Affinity Real Estate - 600 Park Avenue South - Park Rapids MN 56470



website: www.AffinityRealEstate.com | email: info@affinityrealestate.com | office: 218-237-3333 | fax:218-237-3377



\$199,000
MLS 7082492 Lake Land
Lot D 460TH ST
Perham MN 56573



website: www.AffinityRealEstate.com | email: info@affinityrealestate.com | office: 218-237-3333 | fax:218-237-3377



\$199,000
MLS 7082492 Lake Land
Lot D 460TH ST
Perham MN 56573



website: www.AffinityRealEstate.com | email: info@affinityrealestate.com | office: 218-237-3333 | fax:218-237-3377



\$199,000
MLS 7082492 Lake Land
Lot D 460TH ST
Perham MN 56573