



MLS 7082574 Lake Land

\$175,000

Description:

Your Land. Your Timeline. Your Dream.

Finding lakefront property without strict building regulations is nearly impossible—until now. Whether you want to set up a weekend basecamp with a shed or break ground on a custom cabin, this development lets you build on your own terms. Each lot features approximately 200 feet of gorgeous lake frontage, tailored for outdoor lovers who want space to breathe. Plus, you get the peace of lake life with the convenience of being just minutes from Detroit Lakes, Perham, Frazee, and Mills via Highway 10.

Additional Details:

Lot Acres	5.01
Lot Dimensions	1000 x 200
School District	549
Taxes	(unreported)
Taxes with Assessments	(unreported)
Tax Year	2026

Additional Features:

Driving Directions:

From Perham, west on Hwy 10 to 460th St.



Listed By:
eXp Realty

Affinity Real Estate Inc. participates in the Regional Multiple Listing Service of Minnesota, Inc Broker Reciprocity (sm) program, allowing us to display other broker's listings on our website. All properties are subject to prior sale, change or withdrawal.



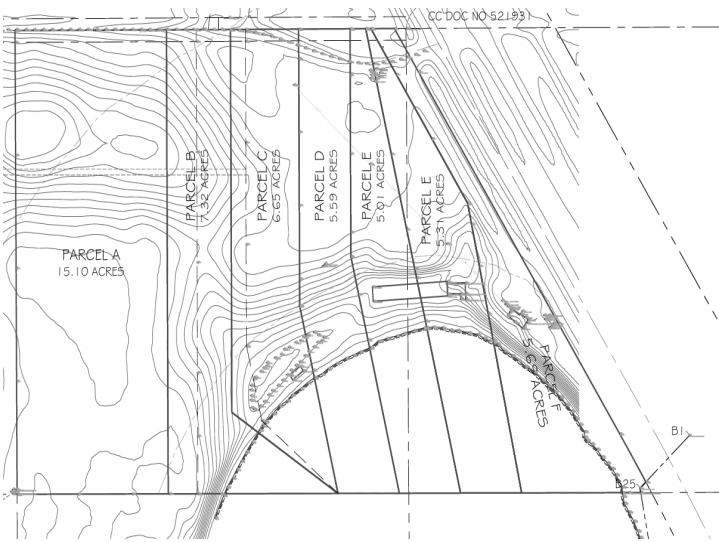
Call Affinity Real Estate

218-237-3333

info@affinityrealestate.com



Affinity Real Estate - 600 Park Avenue South - Park Rapids MN 56470



website: www.AffinityRealEstate.com | email: info@affinityrealestate.com | office: 218-237-3333 | fax: 218-237-3377



\$175,000
 MLS 7082574 Lake Land
 Lot E 460TH ST
 Perham MN 56573



website: www.AffinityRealEstate.com | email: info@affinityrealestate.com | office: 218-237-3333 | fax:218-237-3377



\$175,000
MLS 7082574 Lake Land
Lot E 460TH ST
Perham MN 56573



website: www.AffinityRealEstate.com | email: info@affinityrealestate.com | office: 218-237-3333 | fax:218-237-3377



\$175,000
MLS 7082574 Lake Land
Lot E 460TH ST
Perham MN 56573