



MLS 7082639 Residential

\$209,000

1,496 sq ft
5 bedrooms
3 baths

326 2nd Avenue
Federal Dam MN 56641

Status: Active

Description:

This solid 5 bed 3 bath home lies in the beautiful Chippewa National Forest and just blocks from Federal Dam Recreation Area. It sits on 1/2 acre and comes with a 1320sf pole building and a metal shipping container for extra storage. This home has received a new basement and extensive remodeling. The great room is so comfy you may not want to leave! The large deck is great for entertaining and the home features a main floor primary bedroom and main floor laundry. The loft holds 2 bedrooms and a 1/2 bath. The basement was rebuilt but has not been fully finished. It holds 2 more bedrooms, living space, a 3/4 bath area and more storage. The outdoor space is wonderful too ~ complete with a fenced in area, clothes lines, expansive lawn and a gorgeous flowering crab tree. Walk to the dam to picnic or camp or swim or launch your boat for fishing. I was lucky enough to see an otter playing there the other day and I can't resist adding a few photos of that happy animal! Set up your showing today!

Additional Details:

Year Built	1985
Lot Acres	0.596
Lot Dimensions	130x200
School District	118
Taxes	\$808
Taxes with Assessments	\$894
Tax Year	2026

Additional Features:

Basement: Full, Partially Finished, Wood **Fuel:** Pellet **Heat:** Other **Sewer:** City Sewer/Connected **Water:** Well **Air Conditioning:** None

Driving Directions:

Hwy 2 to Bena, south on County RD 8 to Federal Dam. Left on 2nd Ave, follow to driveway on the left.



Listed By:
Lake-N-Woods Realty

Affinity Real Estate Inc. participates in the Regional Multiple Listing Service of Minnesota, Inc Broker Reciprocity (sm) program, allowing us to display other broker's listings on our website. All properties are subject to prior sale, change or withdrawal.



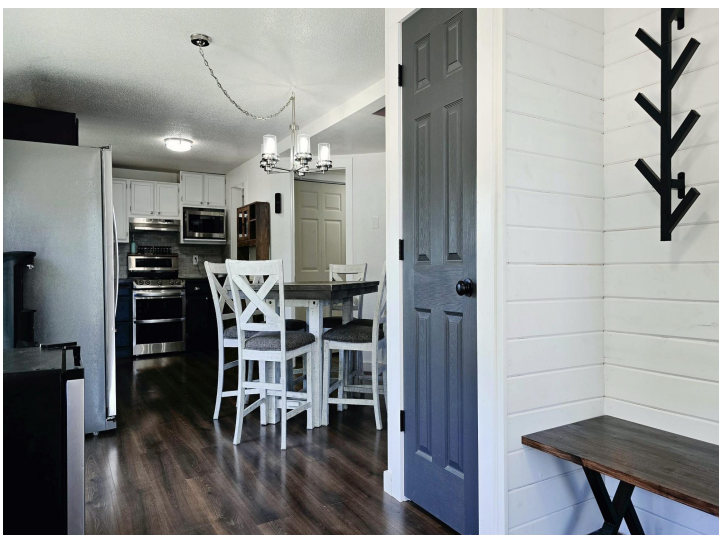
Call Affinity Real Estate

218-237-3333

info@affinityrealestate.com



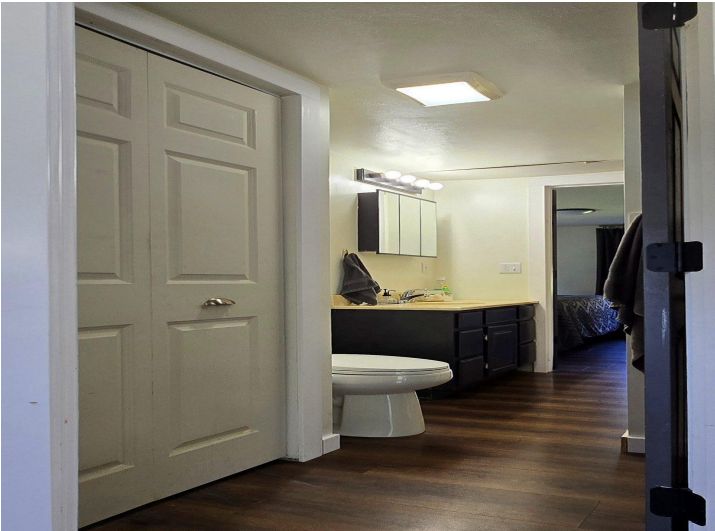
Affinity Real Estate - 600 Park Avenue South - Park Rapids MN 56470



website: www.AffinityRealEstate.com | email: info@affinityrealestate.com | office: 218-237-3333 | fax: 218-237-3377



\$209,000
MLS 7082639 Residential
326 2nd Avenue
Federal Dam MN 56641



website: www.AffinityRealEstate.com | email: info@affinityrealestate.com | office: 218-237-3333 | fax: 218-237-3377

Affinity
REAL ESTATE INC

\$209,000
MLS 7082639 Residential
326 2nd Avenue
Federal Dam MN 56641



website: www.AffinityRealEstate.com | email: info@affinityrealestate.com | office: 218-237-3333 | fax:218-237-3377

Affinity
REAL ESTATE INC

\$209,000
MLS 7082639 Residential
326 2nd Avenue
Federal Dam MN 56641



website: www.AffinityRealEstate.com | email: info@affinityrealestate.com | office: 218-237-3333 | fax:218-237-3377

Affinity
REAL ESTATE INC

\$209,000
MLS 7082639 Residential
326 2nd Avenue
Federal Dam MN 56641



website: www.AffinityRealEstate.com | email: info@affinityrealestate.com | office: 218-237-3333 | fax: 218-237-3377

Affinity
REAL ESTATE INC

\$209,000
MLS 7082639 Residential
326 2nd Avenue
Federal Dam MN 56641



website: www.AffinityRealEstate.com | email: info@affinityrealestate.com | office: 218-237-3333 | fax:218-237-3377



\$209,000
MLS 7082639 Residential
326 2nd Avenue
Federal Dam MN 56641