



MLS 7082649 Lake Home

\$375,000

1,944 sq ft
3 bedrooms
2 baths

42315 County Road 117
Cohasset MN 55721

Waterfront: Mississippi River

Status: Active

Description:

Welcome to peaceful Northern Minnesota living at 42315 County Road 117 in Cohasset. Set on a beautiful lot with mature trees and scenic water views, this updated home offers the perfect mix of comfort, style, and outdoor serenity. Inside, you'll love the bright entry with shiplap style walls, warm flooring, and an inviting open layout filled with natural light. The kitchen features white cabinetry, stainless steel appliances, generous counter space, and a clean modern feel that flows easily into the living area. Large windows frame the surrounding nature, creating a calm and relaxing atmosphere throughout the home.

The living room is spacious and comfortable, while the bedrooms offer a clean, neutral design with great natural light. Outside, enjoy a quiet setting surrounded by trees, open yard space, and beautiful views toward the water and wetlands. An attached garage adds convenience, and the location offers the privacy of country living while still being just minutes from Cohasset and Grand Rapids.

A beautiful setting, updated interior, and true Up North feel make this property one you will not want to miss.

Additional Details:

Year Built	1975
Lot Acres	0.89
Lot Dimensions	219x159.8x199x182.8
Garage Stalls	2
School District	318
Taxes	\$1,836
Taxes with Assessments	\$1,836
Tax Year	2026

Additional Features:

Basement: Crawl Space, Partial, Partially Finished, Storage Space, Sump Pump **Fuel:** Propane **Garage:** 2 **Heat:** Hot Water **Sewer:** Mound Septic **Water:** Well **Air Conditioning:** Ductless Mini-Split

Driving Directions:

From Hwy 212 W to L on CR 63 to R on State Hwy 6 to R on CR 117 to home on R Pemberton RE

Affinity Real Estate Inc. participates in the Regional Multiple Listing Service of Minnesota, Inc Broker Reciprocity (sm) program, allowing us to display other broker's listings on our website. All properties are subject to prior sale, change or withdrawal.



Call Affinity Real Estate

218-237-3333

info@affinityrealestate.com



Affinity Real Estate - 600 Park Avenue South - Park Rapids MN 56470



website: www.AffinityRealEstate.com | email: info@affinityrealestate.com | office: 218-237-3333 | fax:218-237-3377



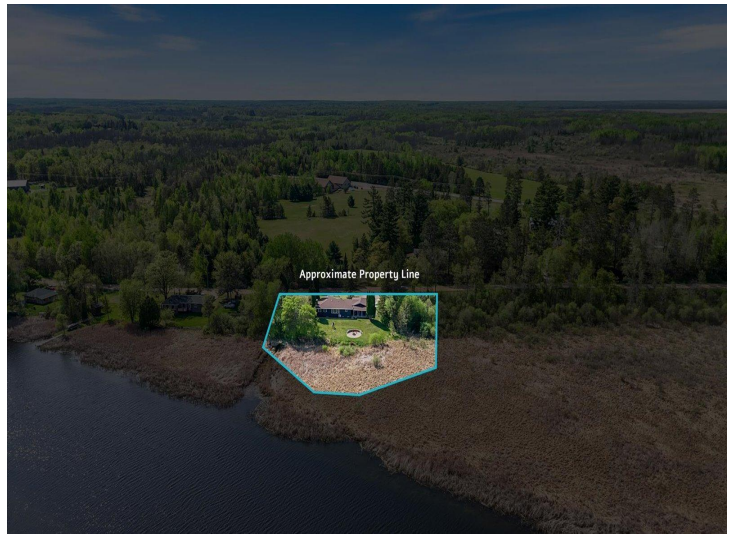
\$375,000
MLS 7082649 Lake Home
42315 County Road 117
Cohasset MN 55721



website: www.AffinityRealEstate.com | email: info@affinityrealestate.com | office: 218-237-3333 | fax:218-237-3377

Affinity
REAL ESTATE INC

\$375,000
MLS 7082649 Lake Home
42315 County Road 117
Cohasset MN 55721



website: www.AffinityRealEstate.com | email: info@affinityrealestate.com | office: 218-237-3333 | fax: 218-237-3377

Affinity
REAL ESTATE INC

\$375,000
MLS 7082649 Lake Home
42315 County Road 117
Cohasset MN 55721



website: www.AffinityRealEstate.com | email: info@affinityrealestate.com | office: 218-237-3333 | fax:218-237-3377

Affinity
REAL ESTATE INC

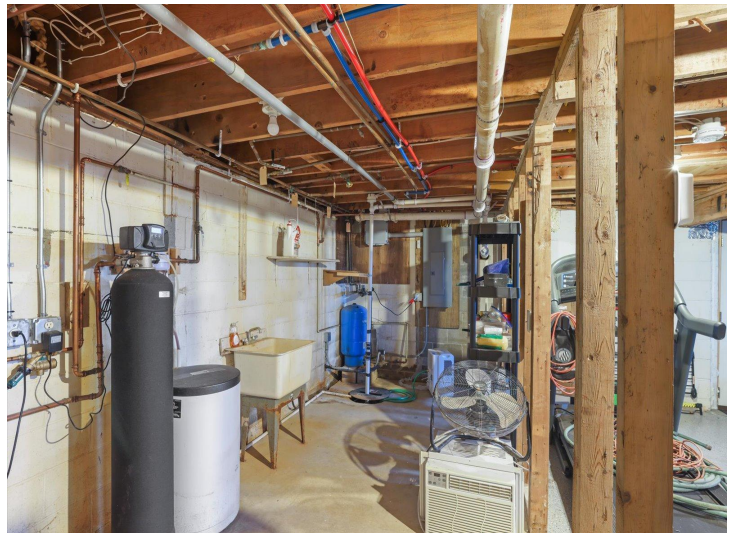
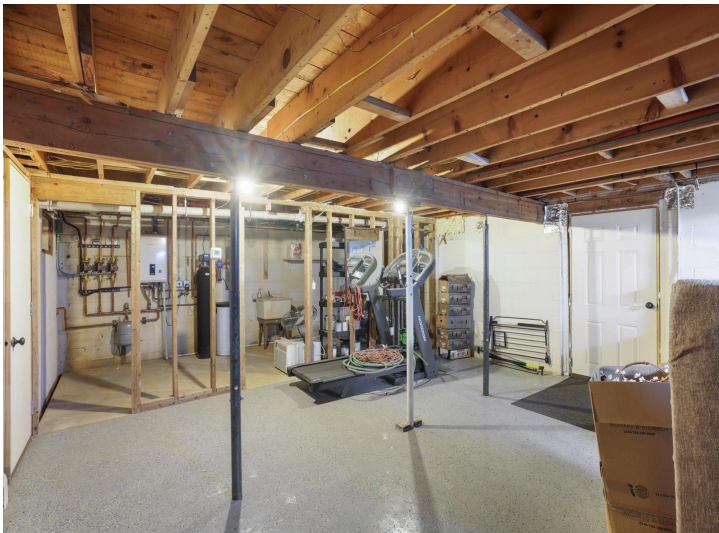
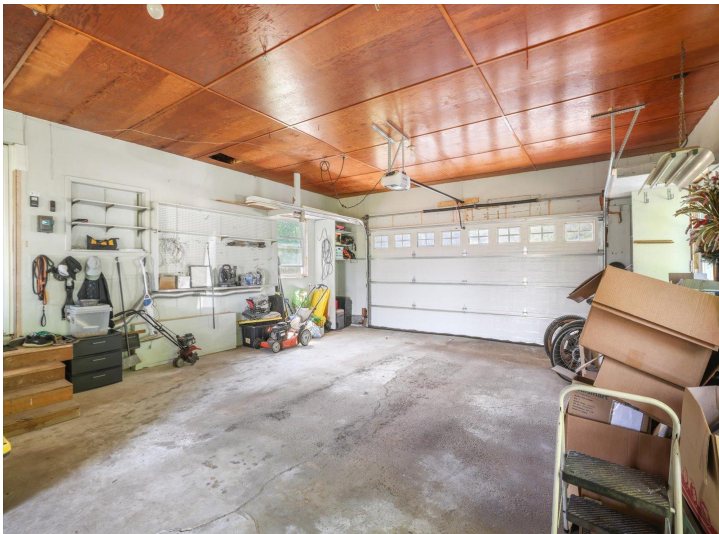
\$375,000
MLS 7082649 Lake Home
42315 County Road 117
Cohasset MN 55721



website: www.AffinityRealEstate.com | email: info@affinityrealestate.com | office: 218-237-3333 | fax: 218-237-3377

Affinity
REAL ESTATE INC

\$375,000
MLS 7082649 Lake Home
42315 County Road 117
Cohasset MN 55721



website: www.AffinityRealEstate.com | email: info@affinityrealestate.com | office: 218-237-3333 | fax: 218-237-3377

Affinity
REAL ESTATE INC

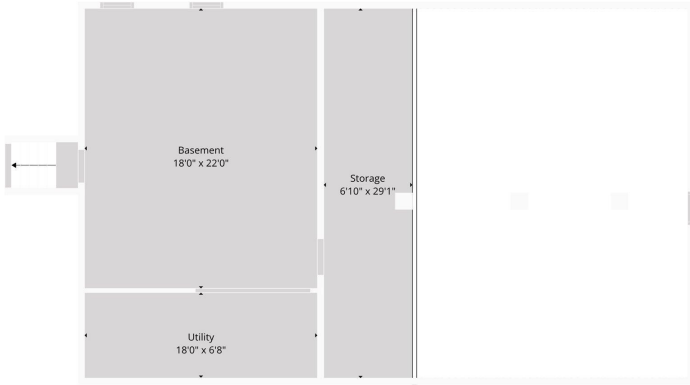
\$375,000
MLS 7082649 Lake Home
42315 County Road 117
Cohasset MN 55721



website: www.AffinityRealEstate.com | email: info@affinityrealestate.com | office: 218-237-3333 | fax:218-237-3377

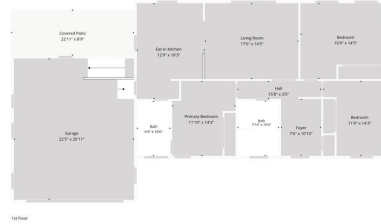
Affinity
REAL ESTATE INC

\$375,000
MLS 7082649 Lake Home
42315 County Road 117
Cohasset MN 55721



TOTAL: 1376 sq. ft.
 Basement: 21 sq. ft. 1st floor: 1355 sq. ft.
 EXCLUDED AREAS: UTILITY: 127 sq. ft. BASEMENT: 396 sq. ft. LOW CEILING: 619 sq. ft.
 STORAGE: 199 sq. ft. GARAGE: 604 sq. ft. COVERED PATIO: 202 sq. ft.
 WALLS: 212 sq. ft.

Floor Plan Created By Cubicula App. Measurements Deemed Highly Reliable But Not Guaranteed.



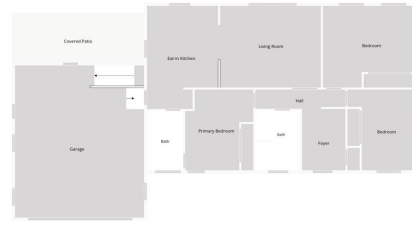
TOTAL: 1376 sq. ft.
 Basement: 21 sq. ft. 1st floor: 1355 sq. ft.
 EXCLUDED AREAS: UTILITY: 127 sq. ft. BASEMENT: 396 sq. ft. LOW CEILING: 619 sq. ft.
 STORAGE: 199 sq. ft. GARAGE: 604 sq. ft. COVERED PATIO: 202 sq. ft.
 WALLS: 212 sq. ft.

Floor Plan Created By Cubicula App. Measurements Deemed Highly Reliable But Not Guaranteed.

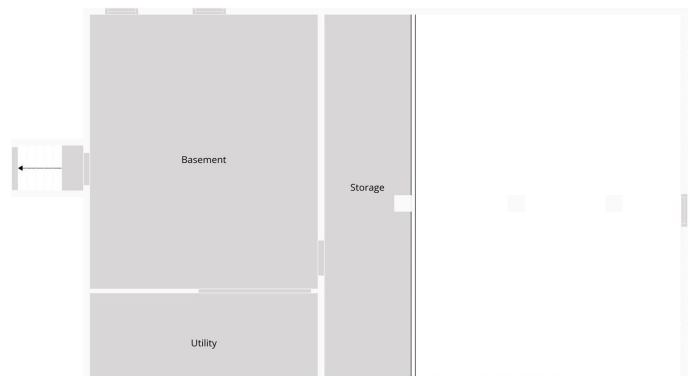


TOTAL: 1376 sq. ft.
 Basement: 21 sq. ft. 1st floor: 1355 sq. ft.
 EXCLUDED AREAS: UTILITY: 127 sq. ft. BASEMENT: 396 sq. ft. LOW CEILING: 619 sq. ft.
 STORAGE: 199 sq. ft. GARAGE: 604 sq. ft. COVERED PATIO: 202 sq. ft.
 WALLS: 212 sq. ft.

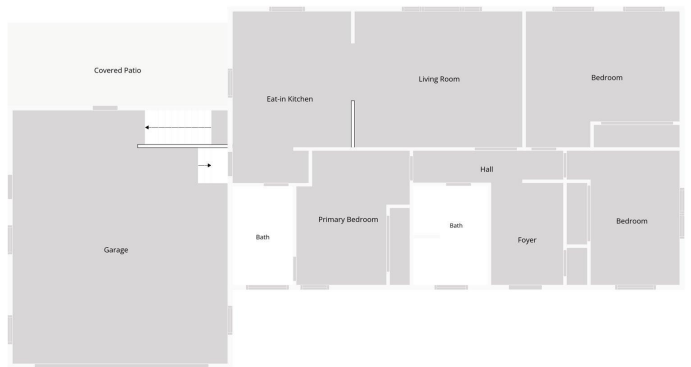
Floor Plan Created By Cubicula App. Measurements Deemed Highly Reliable But Not Guaranteed.



Floor Plan Created By Cubicula App. Measurements Deemed Highly Reliable But Not Guaranteed.



Floor Plan Created By Cubicula App. Measurements Deemed Highly Reliable But Not Guaranteed.



Floor Plan Created By Cubicula App. Measurements Deemed Highly Reliable But Not Guaranteed.

website: www.AffinityRealEstate.com | email: info@affinityrealestate.com | office: 218-237-3333 | fax: 218-237-3377



\$375,000
 MLS 7082649 Lake Home
 42315 County Road 117
 Cohasset MN 55721