



MLS 7082751 Lake Land

\$149,000

Description:

35+ wooded acres in rural Grand Rapids, just minutes from Pokegama Lake. This rolling highland is covered in mid to mature timber and brimming with wildlife sign, offering a true Northwoods feel. Along the back boundary find a 6-acer marsh/wildlife pond enhances habitat and views.

Whether you're seeking a prime hunting retreat or the perfect setting to build your dream home, this property delivers space, privacy, and natural beauty. Schedule a walk of the land today.

Additional Details:

Lot Acres	35.61
Lot Dimensions	IRR
School District	318
Taxes	\$646
Taxes with Assessments	\$646
Tax Year	2026

Additional Features:

Driving Directions:

Hwy 169 from Grand Rapids to L on Co Rd 67 to Property on L



Listed By:
MN DIRECT PROPERTIES

Affinity Real Estate Inc. participates in the Regional Multiple Listing Service of Minnesota, Inc Broker Reciprocity (sm) program, allowing us to display other broker's listings on our website. All properties are subject to prior sale, change or withdrawal.



Call Affinity Real Estate

218-237-3333

info@affinityrealestate.com



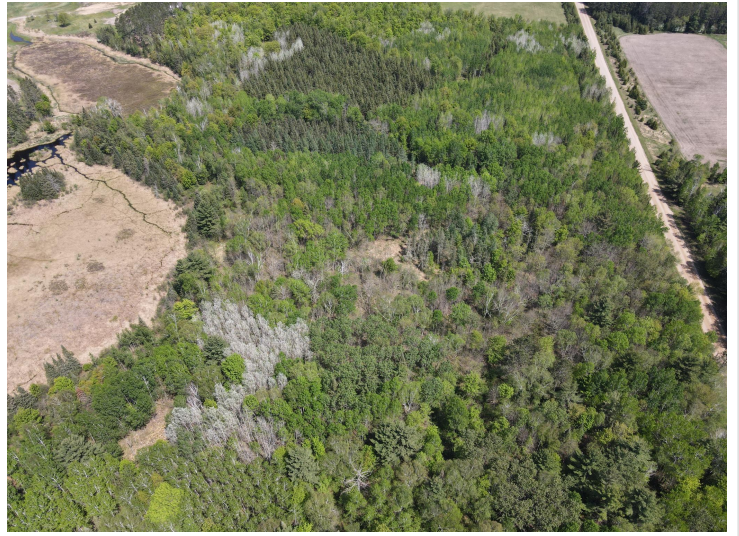
Affinity Real Estate - 600 Park Avenue South - Park Rapids MN 56470



website: www.AffinityRealEstate.com | email: info@affinityrealestate.com | office: 218-237-3333 | fax:218-237-3377

Affinity
REAL ESTATE INC

\$149,000
MLS 7082751 Lake Land
XXX Co Rd 67
Grand Rapids MN 55744



website: www.AffinityRealEstate.com | email: info@affinityrealestate.com | office: 218-237-3333 | fax: 218-237-3377



\$149,000
MLS 7082751 Lake Land
XXX Co Rd 67
Grand Rapids MN 55744



website: www.AffinityRealEstate.com | email: info@affinityrealestate.com | office: 218-237-3333 | fax:218-237-3377



\$149,000
MLS 7082751 Lake Land
XXX Co Rd 67
Grand Rapids MN 55744