



MLS 7083108 Residential

**\$514,000**

3,245 sq ft  
4 bedrooms  
4 baths

21677 162nd Avenue  
Barnesville MN 56514

Status: Active

**Description:**

This dreamy, 2 story home sitting on 1.16 acres with a walk out basement is ready for a new owner - you lucky dog. So many windows overlook the gorgeous views & huge trees. The main floor holds the kitchen with an eat-in space plus formal dining, as well as the primary wing & a cozy living space with a fireplace, all with south facing views. Upstairs has 2 bedrooms with a jack & jill bath, a flex room, plus an unfinished 264 sq ft bonus room above the garage, ready to be finished & enjoyed! The basement has a bedroom, full bath, storage galore, a walkout to the backyard, & a space ready to be turned into a bar / entertainment area. The sellers have had a home inspection completed for you, so take that off your list. Honestly, you just need to come see it!

**Additional Details:**

Year Built	2003
Lot Acres	1.16
Lot Dimensions	Irregular
Garage Stalls	2
School District	146
Taxes	\$3,797
Taxes with Assessments	\$3,848
Tax Year	2026

**Additional Features:**

**Basement:** Finished, Walkout **Fuel:** Propane **Garage:** 2 **Heat:** Forced Air, Radiant **Sewer:** Septic System Compliant - Yes **Water:** Well **Air Conditioning:** Central Air

**Driving Directions:**

From Barnesville head East on Hwy 34. Turn South on 217th. Development is just past the golf course on the South side of 34



Listed By:  
RE/MAX Legacy Realty

Affinity Real Estate Inc. participates in the Regional Multiple Listing Service of Minnesota, Inc Broker Reciprocity (sm) program, allowing us to display other broker's listings on our website. All properties are subject to prior sale, change or withdrawal.



Call Affinity Real Estate

**218-237-3333**

[info@affinityrealestate.com](mailto:info@affinityrealestate.com)



Affinity Real Estate - 600 Park Avenue South - Park Rapids MN 56470



website: [www.AffinityRealEstate.com](http://www.AffinityRealEstate.com) | email: [info@affinityrealestate.com](mailto:info@affinityrealestate.com) | office: 218-237-3333 | fax:218-237-3377



**\$514,000**  
MLS 7083108 Residential  
21677 162nd Avenue  
Barnesville MN 56514



website: [www.AffinityRealEstate.com](http://www.AffinityRealEstate.com) | email: [info@affinityrealestate.com](mailto:info@affinityrealestate.com) | office: 218-237-3333 | fax: 218-237-3377

**Affinity**  
REAL ESTATE INC

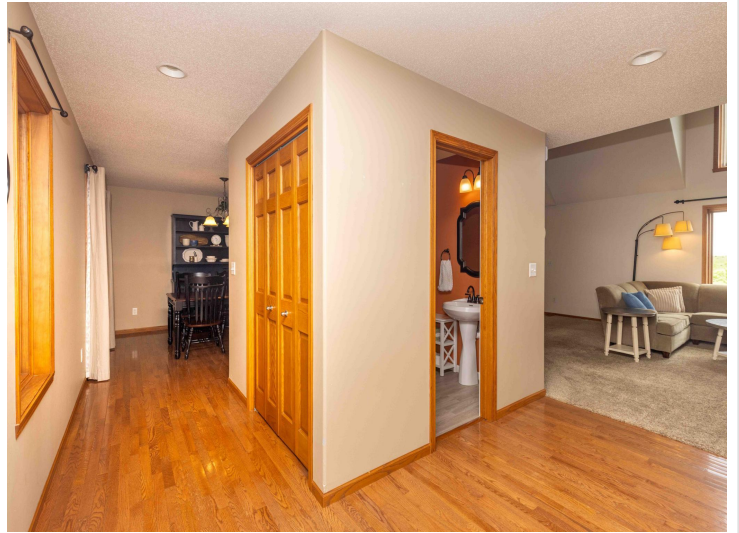
**\$514,000**  
MLS 7083108 Residential  
21677 162nd Avenue  
Barnesville MN 56514



website: [www.AffinityRealEstate.com](http://www.AffinityRealEstate.com) | email: [info@affinityrealestate.com](mailto:info@affinityrealestate.com) | office: 218-237-3333 | fax:218-237-3377



**\$514,000**  
MLS 7083108 Residential  
21677 162nd Avenue  
Barnesville MN 56514



website: [www.AffinityRealEstate.com](http://www.AffinityRealEstate.com) | email: [info@affinityrealestate.com](mailto:info@affinityrealestate.com) | office: 218-237-3333 | fax:218-237-3377

**Affinity**  
REAL ESTATE INC

**\$514,000**  
MLS 7083108 Residential  
21677 162nd Avenue  
Barnesville MN 56514



website: [www.AffinityRealEstate.com](http://www.AffinityRealEstate.com) | email: [info@affinityrealestate.com](mailto:info@affinityrealestate.com) | office: 218-237-3333 | fax:218-237-3377

**Affinity**  
REAL ESTATE INC

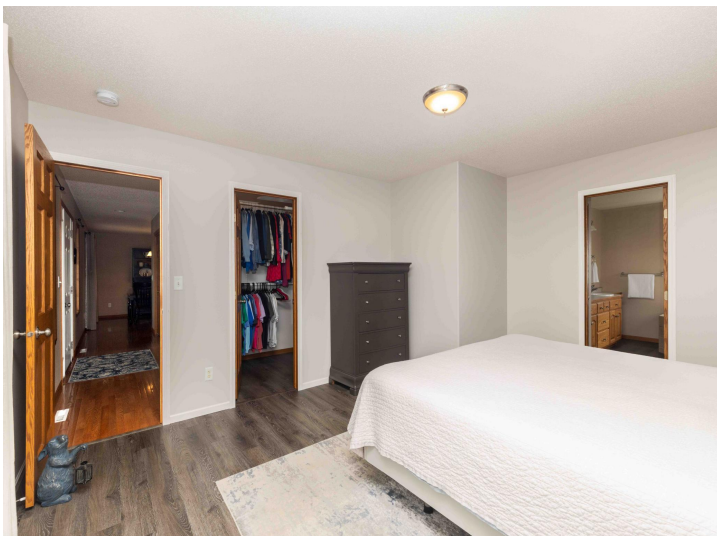
**\$514,000**  
MLS 7083108 Residential  
21677 162nd Avenue  
Barnesville MN 56514



website: [www.AffinityRealEstate.com](http://www.AffinityRealEstate.com) | email: [info@affinityrealestate.com](mailto:info@affinityrealestate.com) | office: 218-237-3333 | fax: 218-237-3377

**Affinity**  
REAL ESTATE INC

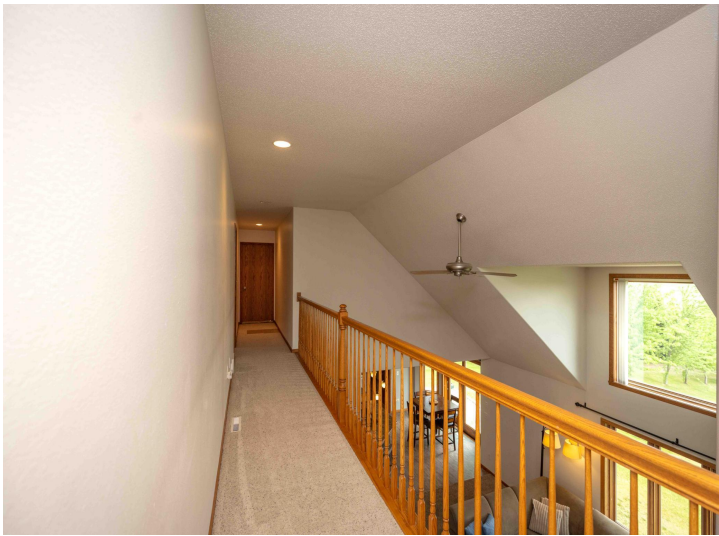
**\$514,000**  
MLS 7083108 Residential  
21677 162nd Avenue  
Barnesville MN 56514



website: [www.AffinityRealEstate.com](http://www.AffinityRealEstate.com) | email: [info@affinityrealestate.com](mailto:info@affinityrealestate.com) | office: 218-237-3333 | fax:218-237-3377

**Affinity**  
REAL ESTATE INC

**\$514,000**  
MLS 7083108 Residential  
21677 162nd Avenue  
Barnesville MN 56514



website: [www.AffinityRealEstate.com](http://www.AffinityRealEstate.com) | email: [info@affinityrealestate.com](mailto:info@affinityrealestate.com) | office: 218-237-3333 | fax:218-237-3377

**Affinity**  
REAL ESTATE INC

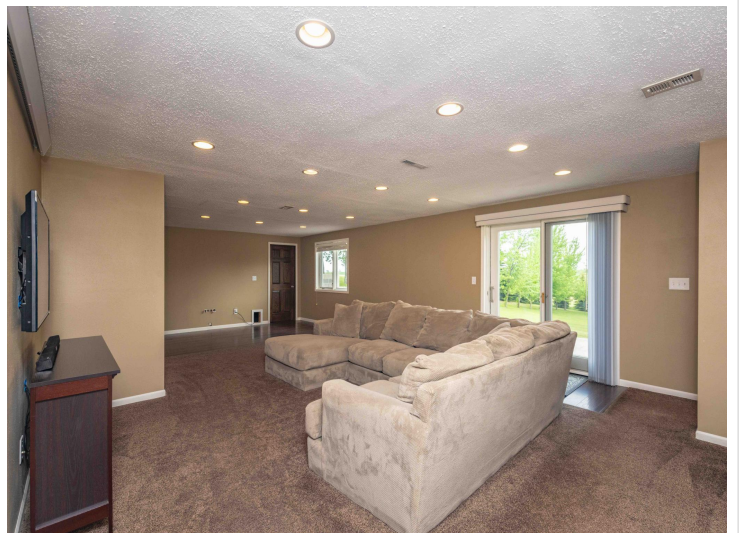
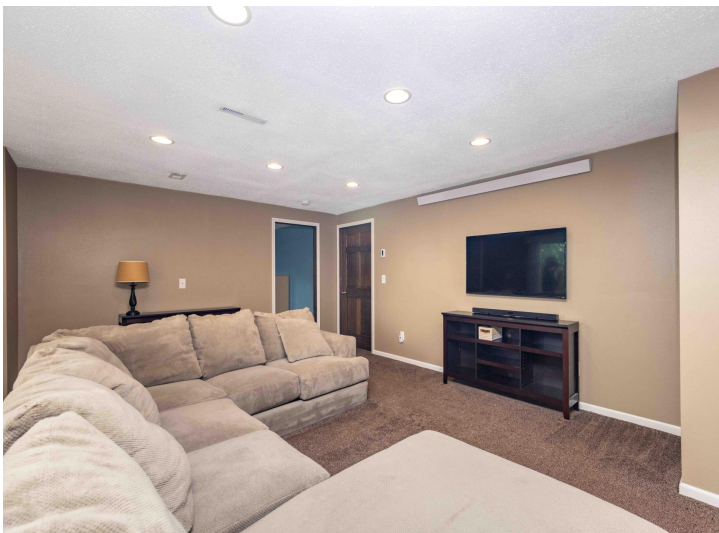
**\$514,000**  
MLS 7083108 Residential  
21677 162nd Avenue  
Barnesville MN 56514



website: [www.AffinityRealEstate.com](http://www.AffinityRealEstate.com) | email: [info@affinityrealestate.com](mailto:info@affinityrealestate.com) | office: 218-237-3333 | fax:218-237-3377

**Affinity**  
REAL ESTATE INC

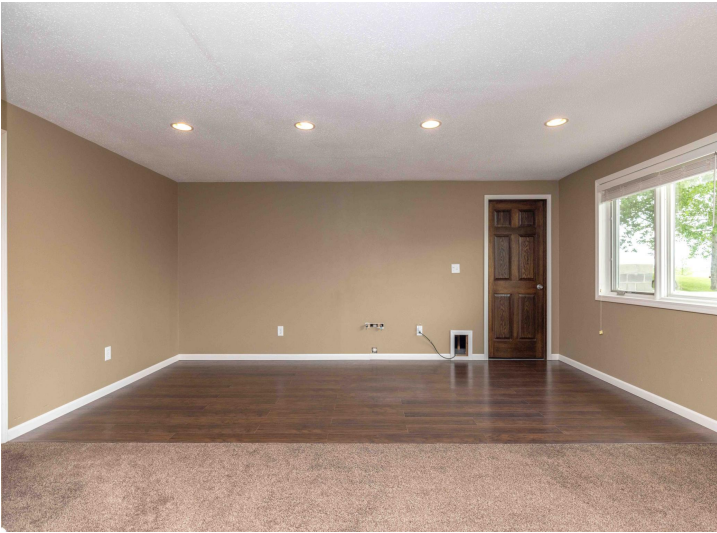
**\$514,000**  
MLS 7083108 Residential  
21677 162nd Avenue  
Barnesville MN 56514



website: [www.AffinityRealEstate.com](http://www.AffinityRealEstate.com) | email: [info@affinityrealestate.com](mailto:info@affinityrealestate.com) | office: 218-237-3333 | fax:218-237-3377



**\$514,000**  
MLS 7083108 Residential  
21677 162nd Avenue  
Barnesville MN 56514



website: [www.AffinityRealEstate.com](http://www.AffinityRealEstate.com) | email: [info@affinityrealestate.com](mailto:info@affinityrealestate.com) | office: 218-237-3333 | fax:218-237-3377



**\$514,000**  
MLS 7083108 Residential  
21677 162nd Avenue  
Barnesville MN 56514



website: [www.AffinityRealEstate.com](http://www.AffinityRealEstate.com) | email: [info@affinityrealestate.com](mailto:info@affinityrealestate.com) | office: 218-237-3333 | fax:218-237-3377



**\$514,000**  
MLS 7083108 Residential  
21677 162nd Avenue  
Barnesville MN 56514