



MLS 7083166 Lake Home

**\$885,000**

3,059 sq ft  
3 bedrooms  
3 baths

10143 Mounds Point Drive  
Cass Lake MN 56633

Waterfront: Leech

Status: Active

**Description:**

Enjoy exceptional sand-bottom swimming and breathtaking sunsets on the shores of beautiful Leech Lake. This meticulously maintained 3-bedroom, 3-bath home offers the perfect blend of comfort, quality, and classic Minnesota lake living.

The main level features a spacious great room highlighted by a stunning wall of lakeside windows, a floor-to-ceiling stone fireplace, Brazilian Koa Tiger Wood flooring, and warm knotty pine tongue-and-groove finishes. The bright kitchen is equipped with stainless steel appliances, including a brand-new range, while the adjoining 4-season porch provides the perfect place to relax and enjoy panoramic lake views year-round. The master suite offers a large walk-in closet and a luxurious bath with a jetted tub. Main-floor laundry and abundant storage add everyday convenience.

Upstairs, you'll find an open loft overlooking the lake, a spacious bedroom, and a ¾ bath. The finished lower level expands the living space with a comfortable family room, an additional large bedroom, and utility area.

Step outside to new maintenance-free decking, ideal for morning coffee, entertaining guests, or simply taking in the spectacular sunsets. Gather around the lakeside firepit, launch a day of boating and fishing, or enjoy swimming from the property's beautiful sandy shoreline.


Family and friends will appreciate the privacy of the separate 2-bedroom guest cottage, complete with a kitchenette and ¾ bath—perfect for extended stays or additional rental potential.

Additional features include maintenance-free steel siding, a Kinetico water softener and filtration system, beautiful mature oak trees, perfect elevation, a gorgeous slate stone patio with firepit, a lake pump, dock, an insulated detached 2-car garage, and a 30' x 48' pole building with power, concrete floor, and oversized overhead door for storing boats, recreational vehicles, and lake toys. A whole-house Generac generator provides year-round peace of mind.

Ideally situated on desirable Oak Point, this exceptional property offers convenient access to both Walker and Bemidji, placing shopping, dining, golf, entertainment, and year-round recreation just a short drive away. Whether you're searching for a full-time residence, a family retreat, or an investment opportunity, this remarkable Leech Lake property delivers the ultimate Minnesota lake lifestyle.

**Additional Details:**

Year Built 1999  
Lot Acres 1.9  
Lot Dimensions irregular

Garage Stalls	5
	Listed By: 15 Bill Hansen Realty/Longville
Taxes	\$5,800
Taxes with Assessments	\$5,800
Tax Year	2020

Affinity Real Estate Inc. participates in the Regional Multiple Listing Service of Minnesota, Inc Broker Reciprocity (sm) program, allowing us to display other broker's listings on our website. All properties are subject to prior sale, change or withdrawal.



**Call Affinity Real Estate**  
**218-237-3333**  
**info@affinityrealestate.com**



**Affinity Real Estate - 600 Park Avenue South - Park Rapids MN 56470**

**Additional Features:**

**Fuel:** Propane **Heat:** Baseboard, Forced Air, Fireplace(s)

**Driving Directions:**



website: [www.AffinityRealEstate.com](http://www.AffinityRealEstate.com) | email: [info@affinityrealestate.com](mailto:info@affinityrealestate.com) | office: 218-237-3333 | fax:218-237-3377



**\$885,000**  
MLS 7083166 Lake Home  
10143 Mounds Point Drive  
Cass Lake MN 56633



website: [www.AffinityRealEstate.com](http://www.AffinityRealEstate.com) | email: [info@affinityrealestate.com](mailto:info@affinityrealestate.com) | office: 218-237-3333 | fax: 218-237-3377

**Affinity**  
REAL ESTATE INC

**\$885,000**  
MLS 7083166 Lake Home  
10143 Mounds Point Drive  
Cass Lake MN 56633



website: [www.AffinityRealEstate.com](http://www.AffinityRealEstate.com) | email: [info@affinityrealestate.com](mailto:info@affinityrealestate.com) | office: 218-237-3333 | fax:218-237-3377



**\$885,000**  
MLS 7083166 Lake Home  
10143 Mounds Point Drive  
Cass Lake MN 56633



website: [www.AffinityRealEstate.com](http://www.AffinityRealEstate.com) | email: [info@affinityrealestate.com](mailto:info@affinityrealestate.com) | office: 218-237-3333 | fax:218-237-3377

**Affinity**  
REAL ESTATE INC

**\$885,000**  
MLS 7083166 Lake Home  
10143 Mounds Point Drive  
Cass Lake MN 56633



website: [www.AffinityRealEstate.com](http://www.AffinityRealEstate.com) | email: [info@affinityrealestate.com](mailto:info@affinityrealestate.com) | office: 218-237-3333 | fax:218-237-3377

**Affinity**  
REAL ESTATE INC

**\$885,000**  
MLS 7083166 Lake Home  
10143 Mounds Point Drive  
Cass Lake MN 56633



website: [www.AffinityRealEstate.com](http://www.AffinityRealEstate.com) | email: [info@affinityrealestate.com](mailto:info@affinityrealestate.com) | office: 218-237-3333 | fax: 218-237-3377

**Affinity**  
REAL ESTATE INC

**\$885,000**  
MLS 7083166 Lake Home  
10143 Mounds Point Drive  
Cass Lake MN 56633



website: [www.AffinityRealEstate.com](http://www.AffinityRealEstate.com) | email: [info@affinityrealestate.com](mailto:info@affinityrealestate.com) | office: 218-237-3333 | fax:218-237-3377

**Affinity**  
REAL ESTATE INC

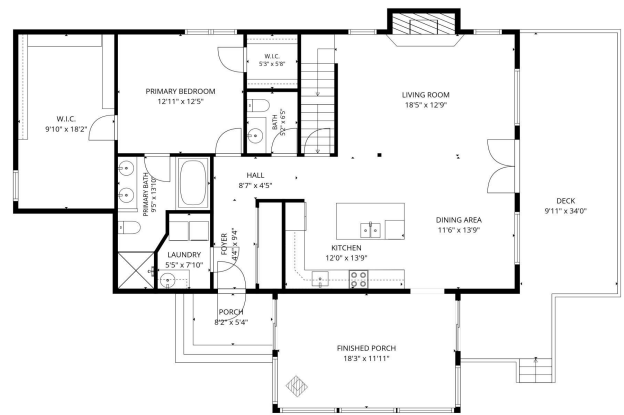
**\$885,000**  
MLS 7083166 Lake Home  
10143 Mounds Point Drive  
Cass Lake MN 56633



website: [www.AffinityRealEstate.com](http://www.AffinityRealEstate.com) | email: [info@affinityrealestate.com](mailto:info@affinityrealestate.com) | office: 218-237-3333 | fax:218-237-3377



**\$885,000**  
MLS 7083166 Lake Home  
10143 Mounds Point Drive  
Cass Lake MN 56633

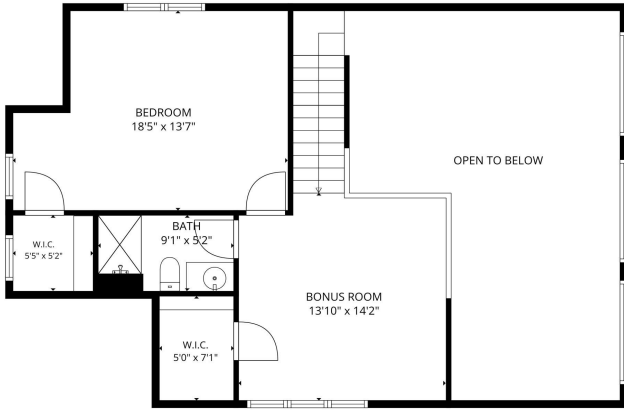


**TOTAL: 2610 sq. ft.**  
 Basement: 750 sq. ft. 1st floor: 1220 sq. ft. 2nd floor: 590 sq. ft.  
 EXCLUDED AREAS: UTILITY: 284 sq. ft. FINISHED PORCH: 218 sq. ft. DECK: 345 sq. ft.  
 PORCH: 72 sq. ft. FIREPLACE: 16 sq. ft. OPEN TO BELOW: 386 sq. ft.  
 LOW CEILING: 4 sq. ft. WALLS: 231 sq. ft.  
FLOOR PLAN GENERATED BY CUDOSHA APP. MEASUREMENTS EXCEPT THOSE SPECIFIED ARE NOT GUARANTEED.

website: [www.AffinityRealEstate.com](http://www.AffinityRealEstate.com) | email: [info@affinityrealestate.com](mailto:info@affinityrealestate.com) | office: 218-237-3333 | fax: 218-237-3377

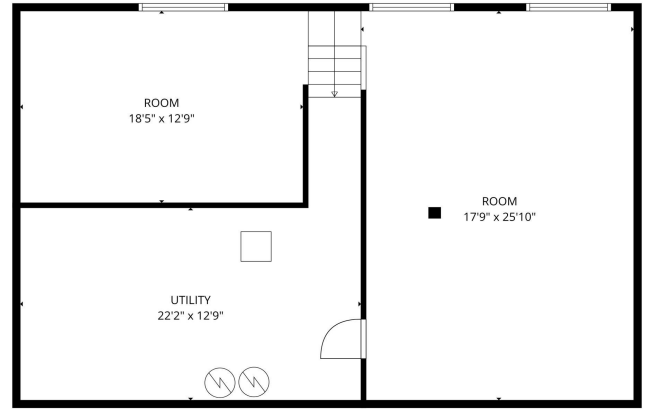


**\$885,000**  
 MLS 7083166 Lake Home  
 10143 Mounds Point Drive  
 Cass Lake MN 56633



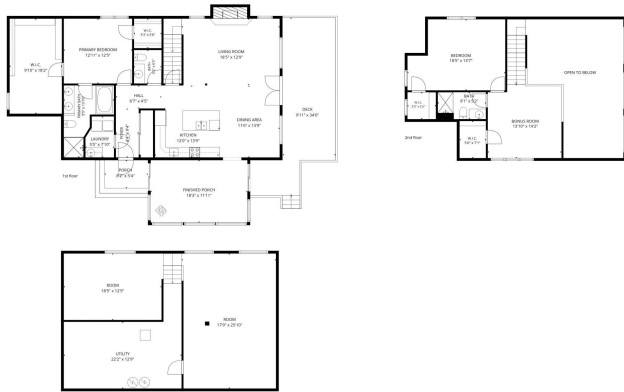
**TOTAL: 2610 sq. ft.**  
 Basement: 750 sq. ft., 1st floor: 1270 sq. ft., 2nd floor: 590 sq. ft.  
 EXCLUDED AREAS: UTILITY: 284 sq. ft., FINISHED PORCH: 218 sq. ft., DECK: 345 sq. ft.,  
 PORCH: 72 sq. ft., FIREPLACE: 16 sq. ft., OPEN TO BELOW: 386 sq. ft.,  
 LOW CEILING: 4 sq. ft., WALLS: 231 sq. ft.

FLOOR PLANS CREATED BY CURTIS AND ASSOCIATES. DIMENSIONS SHOWN ARE APPROXIMATE AND NOT GUARANTEED.



**TOTAL: 2610 sq. ft.**  
 Basement: 750 sq. ft., 1st floor: 1270 sq. ft., 2nd floor: 590 sq. ft.  
 EXCLUDED AREAS: UTILITY: 284 sq. ft., FINISHED PORCH: 218 sq. ft., DECK: 345 sq. ft.,  
 PORCH: 72 sq. ft., FIREPLACE: 16 sq. ft., OPEN TO BELOW: 386 sq. ft.,  
 LOW CEILING: 4 sq. ft., WALLS: 231 sq. ft.

FLOOR PLANS CREATED BY CURTIS AND ASSOCIATES. DIMENSIONS SHOWN ARE APPROXIMATE AND NOT GUARANTEED.



**TOTAL: 2610 sq. ft.**  
 Basement: 750 sq. ft., 1st floor: 1270 sq. ft., 2nd floor: 590 sq. ft.  
 EXCLUDED AREAS: UTILITY: 284 sq. ft., FINISHED PORCH: 218 sq. ft., DECK: 345 sq. ft.,  
 PORCH: 72 sq. ft., FIREPLACE: 16 sq. ft., OPEN TO BELOW: 386 sq. ft.,  
 LOW CEILING: 4 sq. ft., WALLS: 231 sq. ft.

FLOOR PLANS CREATED BY CURTIS AND ASSOCIATES. DIMENSIONS SHOWN ARE APPROXIMATE AND NOT GUARANTEED.

website: [www.AffinityRealEstate.com](http://www.AffinityRealEstate.com) | email: [info@affinityrealestate.com](mailto:info@affinityrealestate.com) | office: 218-237-3333 | fax: 218-237-3377



**\$885,000**  
 MLS 7083166 Lake Home  
 10143 Mounds Point Drive  
 Cass Lake MN 56633