



MLS 7083211 Residential

\$215,000

1,482 sq ft
3 bedrooms
2 baths

315 2nd Street
Wadena MN 56482

Status: Active

Description:

Welcome to 315 2nd St SE! This well-maintained, move-in-ready home showcases true pride of ownership throughout. Step into the inviting four-season porch, the perfect place to enjoy your morning coffee and relax year-round. The main level features all bedrooms and a full bathroom, offering convenient one-level living. Laundry is currently located in the third bedroom but can be moved back to the lower level if desired. The spacious living room provides plenty of room to gather, while the kitchen offers excellent storage with convenient roll-out cabinet drawers. Enjoy both front and back decks, providing great spaces for relaxing, entertaining, or enjoying the beautifully landscaped yard. A detached two-stall garage offers additional storage and parking. You'll also find a charming shed with electricity, ideal for hobbies, crafts, a workshop, home office, or additional flex space. The lower level includes a half bath, ample storage, and plenty of potential to customize the space to fit your needs. Conveniently located in town and close to shopping, dining, schools, and other amenities, this home is ready for its next owner to move right in and enjoy.

Additional Details:


Year Built	1920
Lot Acres	0.16
Lot Dimensions	50' x 140'
Garage Stalls	2
School District	2155
Taxes	\$1,678
Taxes with Assessments	\$1,748
Tax Year	2026

Additional Features:

Basement: Unfinished **Fuel:** Natural Gas **Garage:** 2 **Heat:** Forced Air **Sewer:** City Sewer/Connected **Water:** City Water/Connected **Air Conditioning:** Central Air

Driving Directions:

Jefferson St to Colfax AVE Se to 2nd St SE then rt to property.



Listed By:
Premier Realty Group

Affinity Real Estate Inc. participates in the Regional Multiple Listing Service of Minnesota, Inc Broker Reciprocity (sm) program, allowing us to display other broker's listings on our website. All properties are subject to prior sale, change or withdrawal.



Call Affinity Real Estate
218-237-3333
info@affinityrealestate.com



Affinity Real Estate - 600 Park Avenue South - Park Rapids MN 56470



website: www.AffinityRealEstate.com | email: info@affinityrealestate.com | office: 218-237-3333 | fax:218-237-3377

Affinity
REAL ESTATE INC

\$215,000
MLS 7083211 Residential
315 2nd Street
Wadena MN 56482



website: www.AffinityRealEstate.com | email: info@affinityrealestate.com | office: 218-237-3333 | fax: 218-237-3377

Affinity
REAL ESTATE INC

\$215,000
MLS 7083211 Residential
315 2nd Street
Wadena MN 56482



website: www.AffinityRealEstate.com | email: info@affinityrealestate.com | office: 218-237-3333 | fax:218-237-3377

Affinity
REAL ESTATE INC

\$215,000
MLS 7083211 Residential
315 2nd Street
Wadena MN 56482



website: www.AffinityRealEstate.com | email: info@affinityrealestate.com | office: 218-237-3333 | fax: 218-237-3377

Affinity
REAL ESTATE INC

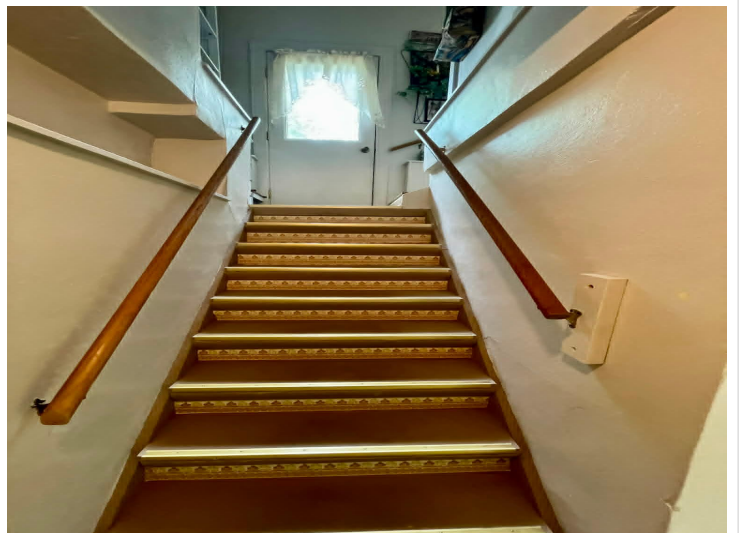
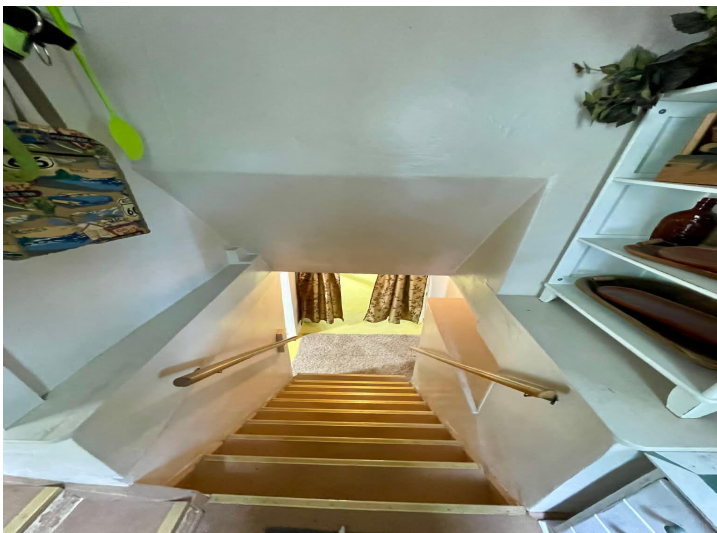
\$215,000
MLS 7083211 Residential
315 2nd Street
Wadena MN 56482



website: www.AffinityRealEstate.com | email: info@affinityrealestate.com | office: 218-237-3333 | fax: 218-237-3377

Affinity
REAL ESTATE INC

\$215,000
MLS 7083211 Residential
315 2nd Street
Wadena MN 56482



website: www.AffinityRealEstate.com | email: info@affinityrealestate.com | office: 218-237-3333 | fax:218-237-3377

Affinity
REAL ESTATE INC

\$215,000
MLS 7083211 Residential
315 2nd Street
Wadena MN 56482



website: www.AffinityRealEstate.com | email: info@affinityrealestate.com | office: 218-237-3333 | fax:218-237-3377

Affinity
REAL ESTATE INC

\$215,000
MLS 7083211 Residential
315 2nd Street
Wadena MN 56482



website: www.AffinityRealEstate.com | email: info@affinityrealestate.com | office: 218-237-3333 | fax:218-237-3377



\$215,000
MLS 7083211 Residential
315 2nd Street
Wadena MN 56482



website: www.AffinityRealEstate.com | email: info@affinityrealestate.com | office: 218-237-3333 | fax:218-237-3377

Affinity
REAL ESTATE INC

\$215,000
MLS 7083211 Residential
315 2nd Street
Wadena MN 56482



website: www.AffinityRealEstate.com | email: info@affinityrealestate.com | office: 218-237-3333 | fax:218-237-3377



\$215,000
MLS 7083211 Residential
315 2nd Street
Wadena MN 56482