



MLS 7083279 Residential

\$199,900

1,022 sq ft
2 bedrooms
2 baths

1315 Pine Street
Brainerd MN 56401

Status: Active

Description:

Welcome to 1315 Pine Street — a charming 2-bedroom, 2-bath home offering the perfect blend of comfort and character. Step into the inviting front sunroom, filled with natural light that flows into a spacious living room ideal for relaxing or entertaining. The home features recent updates including a new furnace, central A/C, and water softener for peace of mind. The full basement provides excellent storage and laundry space, while the detached 1-car garage and off-street parking add convenience. Enjoy the semi-private backyard, perfect for outdoor gatherings or simply unwinding in your own little retreat. Located on a quaint city lot near all that Brainerd has to offer, this home is move-in ready and full of warmth and potential!

Additional Details:

Year Built	1938
Lot Acres	0.16
Lot Dimensions	140x50
Garage Stalls	1
School District	181
Taxes	\$1,250
Taxes with Assessments	\$1,250
Tax Year	2024

Additional Features:

Basement: Full **Fuel:** Natural Gas **Garage:** 1 **Heat:** Forced Air **Sewer:** City Sewer/Connected **Water:** City Water/Connected **Air Conditioning:** Window Unit(s)

Driving Directions:

From Washington St. in East Brainerd, Turn South on SE 13th St. to Left on Pine St. to home on left



Listed By:
Woods to Water Real Estate

Affinity Real Estate Inc. participates in the Regional Multiple Listing Service of Minnesota, Inc Broker Reciprocity (sm) program, allowing us to display other broker's listings on our website. All properties are subject to prior sale, change or withdrawal.



Call Affinity Real Estate

218-237-3333

info@affinityrealestate.com



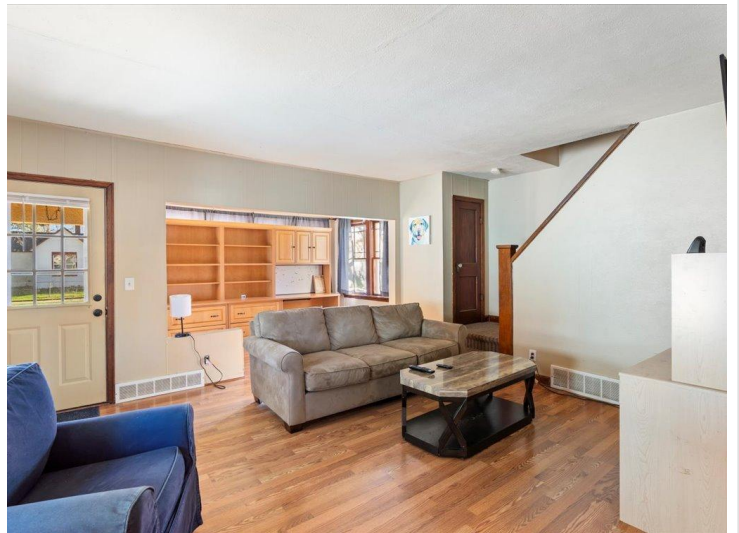
Affinity Real Estate - 600 Park Avenue South - Park Rapids MN 56470



website: www.AffinityRealEstate.com | email: info@affinityrealestate.com | office: 218-237-3333 | fax: 218-237-3377

Affinity
REAL ESTATE INC

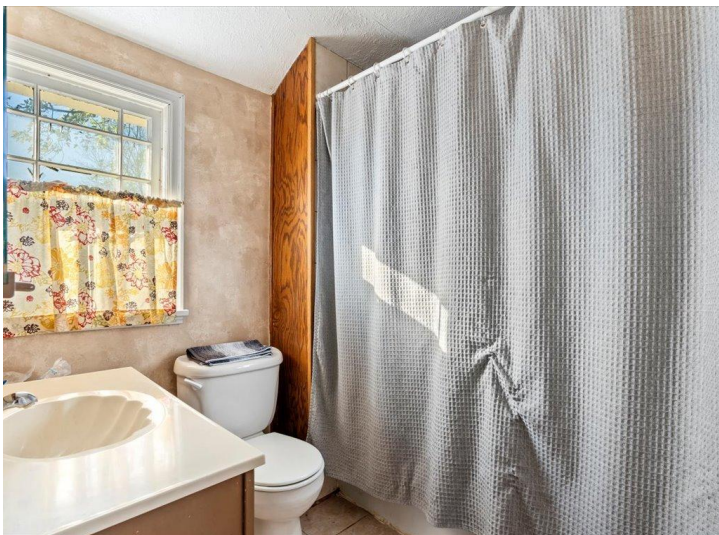
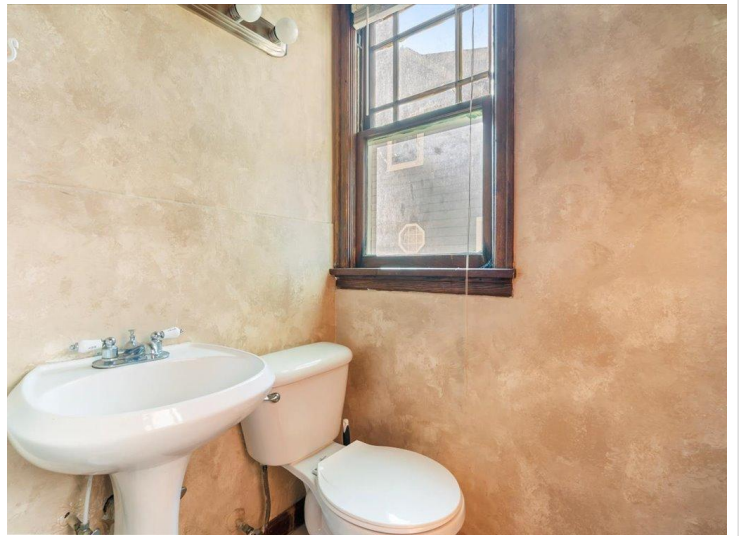
\$199,900
MLS 7083279 Residential
1315 Pine Street
Brainerd MN 56401



website: www.AffinityRealEstate.com | email: info@affinityrealestate.com | office: 218-237-3333 | fax: 218-237-3377

Affinity
REAL ESTATE INC

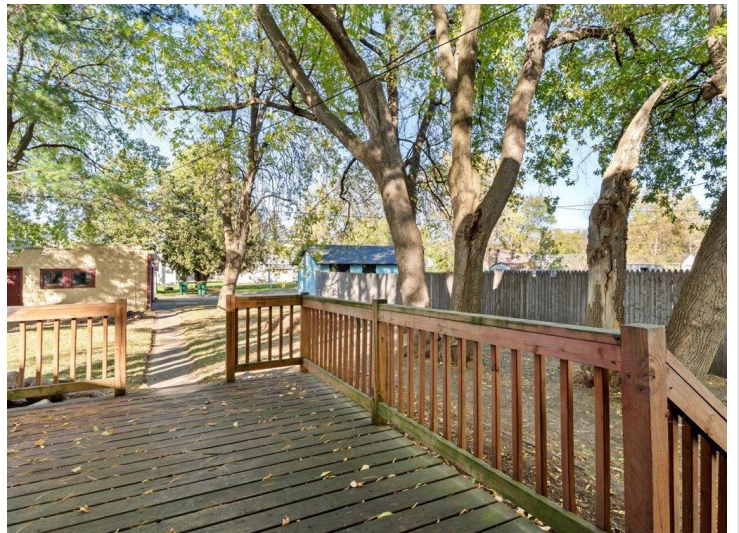
\$199,900
MLS 7083279 Residential
1315 Pine Street
Brainerd MN 56401



website: www.AffinityRealEstate.com | email: info@affinityrealestate.com | office: 218-237-3333 | fax: 218-237-3377

Affinity
REAL ESTATE INC

\$199,900
MLS 7083279 Residential
1315 Pine Street
Brainerd MN 56401



website: www.AffinityRealEstate.com | email: info@affinityrealestate.com | office: 218-237-3333 | fax:218-237-3377

Affinity
REAL ESTATE INC

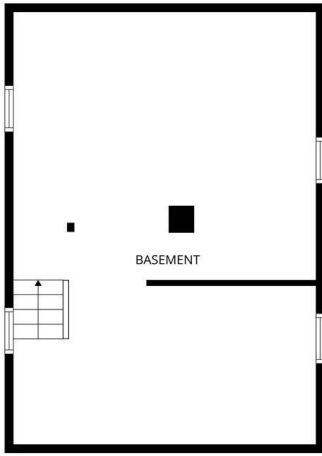
\$199,900
MLS 7083279 Residential
1315 Pine Street
Brainerd MN 56401



website: www.AffinityRealEstate.com | email: info@affinityrealestate.com | office: 218-237-3333 | fax:218-237-3377



\$199,900
MLS 7083279 Residential
1315 Pine Street
Brainerd MN 56401



FLOOR PLAN CREATED BY CUBICSCA APP. MEASUREMENTS DEEMED HIGHLY RELIABLE BUT NOT GUARANTEED.



FLOOR PLAN CREATED BY CUBICSCA APP. MEASUREMENTS DEEMED HIGHLY RELIABLE BUT NOT GUARANTEED.



FLOOR PLAN CREATED BY CUBICSCA APP. MEASUREMENTS DEEMED HIGHLY RELIABLE BUT NOT GUARANTEED.



FLOOR PLAN CREATED BY CUBICSCA APP. MEASUREMENTS DEEMED HIGHLY RELIABLE BUT NOT GUARANTEED.



FLOOR PLAN CREATED BY CUBICSCA APP. MEASUREMENTS DEEMED HIGHLY RELIABLE BUT NOT GUARANTEED.



FLOOR PLAN CREATED BY CUBICSCA APP. MEASUREMENTS DEEMED HIGHLY RELIABLE BUT NOT GUARANTEED.

website: www.AffinityRealEstate.com | email: info@affinityrealestate.com | office: 218-237-3333 | fax: 218-237-3377



\$199,900
 MLS 7083279 Residential
 1315 Pine Street
 Brainerd MN 56401



FLOOR PLAN CREATED BY CURICASA APP. MEASUREMENTS DEEMED HIGHLY RELIABLE BUT NOT GUARANTEED.

website: www.AffinityRealEstate.com | email: info@affinityrealestate.com | office: 218-237-3333 | fax:218-237-3377



\$199,900
 MLS 7083279 Residential
 1315 Pine Street
 Brainerd MN 56401