



MLS 7083575 Lake Home

\$249,000

2,206 sq ft
4 bedrooms
2 baths

6931 Lake Lawrence Trail
Outing MN 56662

Waterfront: Lawrence

Status: Active

Description:

Escape to your own Up North retreat! Surrounded by towering pines and abundant wildlife, this fully furnished 4-bedroom, 2-bath home offers the perfect blend of comfort and recreation. Enjoy a spacious living room with a cozy wood-burning fireplace, kitchen offering abundant space, sauna, lower screened porch, oversized garage, and a 30' x 40' detached garage for your boat, ATVs, and outdoor gear.

Relax on the large deck or in your hot tub taking in the peaceful surroundings, while being just minutes from groceries, ice cream, restaurants and lake activities.

Bonus: The Blackstone grill, hot tub, pontoon, trampoline, almost everything in the garage and lake toys are included with the sale. Move in and start enjoying lake life just minutes from your doorstep!

Additional Details:


Year Built	1981
Lot Acres	1.58
Lot Dimensions	202x331x181x392
Garage Stalls	5
School District	118
Taxes	\$1,290
Taxes with Assessments	\$1,356
Tax Year	2026

Additional Features:

Basement: Walkout **Fuel:** Electric **Garage:** 5 **Heat:** Baseboard **Sewer:** Private Sewer **Water:** Well **Air Conditioning:** Wall Unit(s)

Driving Directions:

Cty Rd 6 to Cty Rd 58 NE to Lake Lawrence Trail, Property will be on the right hand side of the road.

 Listed By:
Anchor Realty

Affinity Real Estate Inc. participates in the Regional Multiple Listing Service of Minnesota, Inc Broker Reciprocity (sm) program, allowing us to display other broker's listings on our website. All properties are subject to prior sale, change or withdrawal.

 **Call Affinity Real Estate**
218-237-3333
info@affinityrealestate.com

Affinity Real Estate - 600 Park Avenue South - Park Rapids MN 56470



website: www.AffinityRealEstate.com | email: info@affinityrealestate.com | office: 218-237-3333 | fax: 218-237-3377

Affinity
REAL ESTATE INC

\$249,000
MLS 7083575 Lake Home
6931 Lake Lawrence Trail
Outing MN 56662



website: www.AffinityRealEstate.com | email: info@affinityrealestate.com | office: 218-237-3333 | fax: 218-237-3377

Affinity
REAL ESTATE INC

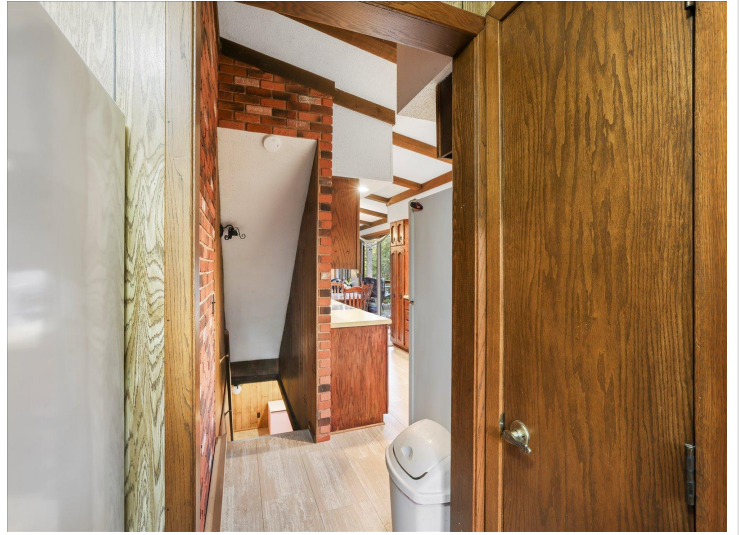
\$249,000
MLS 7083575 Lake Home
6931 Lake Lawrence Trail
Outing MN 56662



website: www.AffinityRealEstate.com | email: info@affinityrealestate.com | office: 218-237-3333 | fax:218-237-3377

Affinity
REAL ESTATE INC

\$249,000
MLS 7083575 Lake Home
6931 Lake Lawrence Trail
Outing MN 56662



website: www.AffinityRealEstate.com | email: info@affinityrealestate.com | office: 218-237-3333 | fax:218-237-3377

Affinity
REAL ESTATE INC

\$249,000
MLS 7083575 Lake Home
6931 Lake Lawrence Trail
Outing MN 56662



website: www.AffinityRealEstate.com | email: info@affinityrealestate.com | office: 218-237-3333 | fax: 218-237-3377



\$249,000
MLS 7083575 Lake Home
6931 Lake Lawrence Trail
Outing MN 56662



website: www.AffinityRealEstate.com | email: info@affinityrealestate.com | office: 218-237-3333 | fax:218-237-3377

Affinity
REAL ESTATE INC

\$249,000
MLS 7083575 Lake Home
6931 Lake Lawrence Trail
Outing MN 56662



website: www.AffinityRealEstate.com | email: info@affinityrealestate.com | office: 218-237-3333 | fax: 218-237-3377

Affinity
REAL ESTATE INC

\$249,000
MLS 7083575 Lake Home
6931 Lake Lawrence Trail
Outing MN 56662



website: www.AffinityRealEstate.com | email: info@affinityrealestate.com | office: 218-237-3333 | fax:218-237-3377

Affinity
REAL ESTATE INC

\$249,000
MLS 7083575 Lake Home
6931 Lake Lawrence Trail
Outing MN 56662