



MLS 7083686 Lake Land

\$599,900

Description:

Welcome to 3790 County Road 168 in Pequot Lakes.

This Legacy property is now available for the first time ever. Bring your dream & floorplans for a year round home or cabin to anchor your next chapter in your family story. 4.88 acres on Sibley Lake, a beautiful, quiet, amazing getaway yet convenient to all amenities that the Pequot Lakes/ Nisswa/ Brained Lakes area offers. North and West facing sunsets await you while you gather around the campfire and build your next chapter. Start from scratch, this blank slate is waiting for the next stewards of this property. 28.46 additional acres adjacent are available for purchase, PID#29220555 see MLS# 7083669

Additional Details:

Lot Acres	4.88
Lot Dimensions	254x76x75x585x329x661
School District	186
Taxes	\$2,487
Taxes with Assessments	\$2,487
Tax Year	2026

Additional Features:

Driving Directions:

From Pequot Lakes, South on 371 to Patriot Avenue, West to County Road 168, West to property on your Right



Listed By:
Real Broker, LLC

Affinity Real Estate Inc. participates in the Regional Multiple Listing Service of Minnesota, Inc Broker Reciprocity (sm) program, allowing us to display other broker's listings on our website. All properties are subject to prior sale, change or withdrawal.



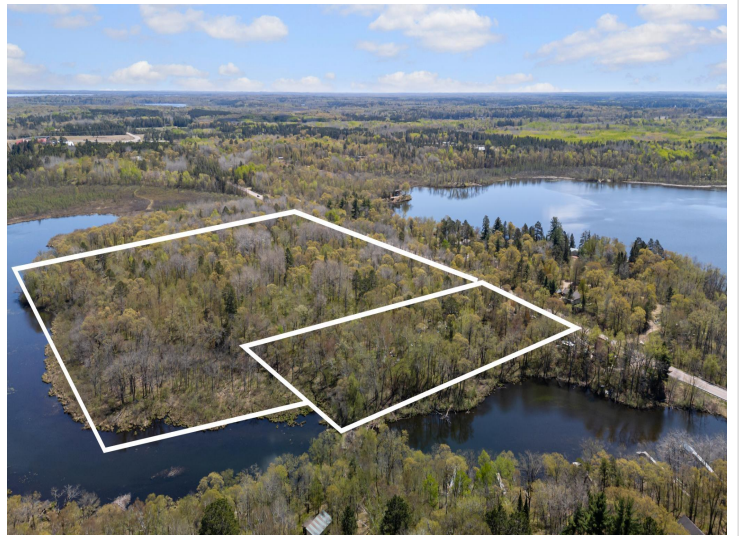
Call Affinity Real Estate

218-237-3333

info@affinityrealestate.com



Affinity Real Estate - 600 Park Avenue South - Park Rapids MN 56470



website: www.AffinityRealEstate.com | email: info@affinityrealestate.com | office: 218-237-3333 | fax:218-237-3377



\$599,900
MLS 7083686 Lake Land
3790 County Road 168
Pequot Lakes MN 56472



website: www.AffinityRealEstate.com | email: info@affinityrealestate.com | office: 218-237-3333 | fax:218-237-3377



\$599,900
MLS 7083686 Lake Land
3790 County Road 168
Pequot Lakes MN 56472



website: www.AffinityRealEstate.com | email: info@affinityrealestate.com | office: 218-237-3333 | fax:218-237-3377



\$599,900
MLS 7083686 Lake Land
3790 County Road 168
Pequot Lakes MN 56472



website: www.AffinityRealEstate.com | email: info@affinityrealestate.com | office: 218-237-3333 | fax:218-237-3377



\$599,900

MLS 7083686 Lake Land
3790 County Road 168
Pequot Lakes MN 56472