



MLS 7083930 Lake Home

\$825,000

2,110 sq ft
3 bedrooms
3 baths

11695 Eagle View Trail
Nisswa MN 56468

Waterfront: Edward

Status: Active

Description:

Experience lakeside luxury in this Frank Lloyd Wright–inspired walkout home on Lake Edward. Set on a rare south-facing, level lot with a beautiful sandy shoreline, this property offers a perfect blend of architectural character and modern comfort with seamless lakeside walkout access. The gourmet kitchen is designed for both everyday living and entertaining, featuring high-end finishes and a long list of thoughtful upgrades and improvements. Natural stone and tile flooring add timeless elegance, while a massive statement fireplace anchors the living space with warmth and style. Expansive lakeside windows fill the home with natural light and showcase stunning water views. Enjoy the convenience of main-floor laundry and a well-designed layout that maximizes both functionality and connection to the outdoors. A lengthy list of updates throughout the home provides added value and peace of mind. Step outside to a spacious deck and beautifully landscaped grounds featuring boulder accents, creating a natural, low-maintenance setting. With easy walkout access to the lake, it's ideal for relaxing, entertaining, and embracing true Minnesota lake living. Fishing enthusiasts will love Lake Edward, known for its excellent multi-species fishing and approximately 12 feet of water clarity. All of this is located in the heart of the Brainerd Lakes Area, just minutes from dining, golf, shopping, and local amenities.

Additional Details:

Year Built	1982
Lot Acres	0.81
Lot Dimensions	100x302x100x295
Garage Stalls	2
School District	182
Taxes	\$3,259
Taxes with Assessments	\$3,300
Tax Year	2026


Additional Features:

Fuel: Natural Gas **Heat:** Forced Air, Fireplace(s), Wood Stove

Driving Directions:

From Brainerd, North on Cty Rd 3 to continue onto Cty Rd 4 to Right on Cty Rd 118 to Right on Eagle View Trl to Left to stay on Eagle View Trl to property on Right.

View Trl to property on Right.



Listed By:
Edina Realty, Inc.

Affinity Real Estate Inc. participates in the Regional Multiple Listing Service of Minnesota, Inc Broker Reciprocity (sm) program, allowing us to display other broker's listings on our website. All properties are subject to prior sale, change or withdrawal.



Call Affinity Real Estate

218-237-3333

info@affinityrealestate.com



Affinity Real Estate - 600 Park Avenue South - Park Rapids MN 56470



website: www.AffinityRealEstate.com | email: info@affinityrealestate.com | office: 218-237-3333 | fax:218-237-3377



\$825,000
MLS 7083930 Lake Home
11695 Eagle View Trail
Nisswa MN 56468



website: www.AffinityRealEstate.com | email: info@affinityrealestate.com | office: 218-237-3333 | fax:218-237-3377

Affinity
REAL ESTATE INC

\$825,000
MLS 7083930 Lake Home
11695 Eagle View Trail
Nisswa MN 56468



website: www.AffinityRealEstate.com | email: info@affinityrealestate.com | office: 218-237-3333 | fax:218-237-3377

Affinity
REAL ESTATE INC

\$825,000
MLS 7083930 Lake Home
11695 Eagle View Trail
Nisswa MN 56468



website: www.AffinityRealEstate.com | email: info@affinityrealestate.com | office: 218-237-3333 | fax:218-237-3377

Affinity
REAL ESTATE INC

\$825,000
MLS 7083930 Lake Home
11695 Eagle View Trail
Nisswa MN 56468



website: www.AffinityRealEstate.com | email: info@affinityrealestate.com | office: 218-237-3333 | fax:218-237-3377

Affinity
REAL ESTATE INC

\$825,000
MLS 7083930 Lake Home
11695 Eagle View Trail
Nisswa MN 56468



website: www.AffinityRealEstate.com | email: info@affinityrealestate.com | office: 218-237-3333 | fax: 218-237-3377

Affinity
REAL ESTATE INC

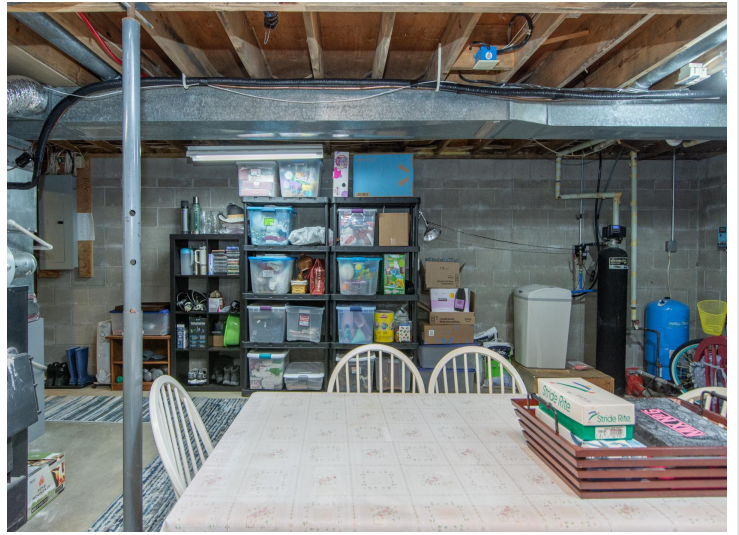
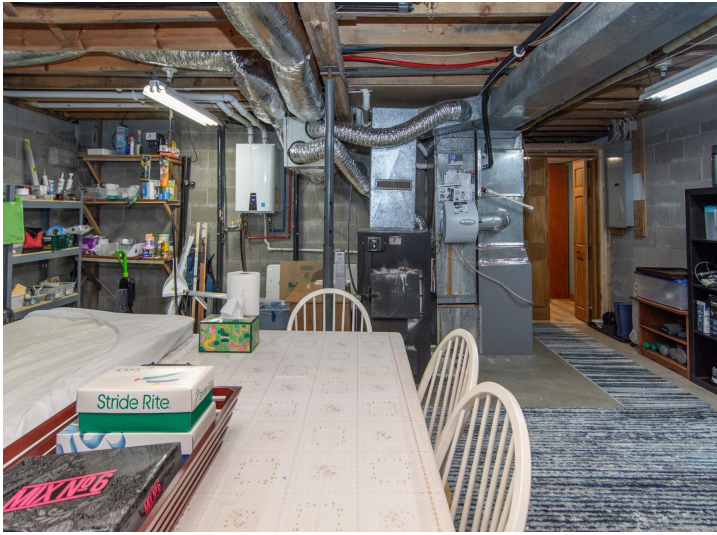
\$825,000
MLS 7083930 Lake Home
11695 Eagle View Trail
Nisswa MN 56468



website: www.AffinityRealEstate.com | email: info@affinityrealestate.com | office: 218-237-3333 | fax:218-237-3377

Affinity
REAL ESTATE INC

\$825,000
MLS 7083930 Lake Home
11695 Eagle View Trail
Nisswa MN 56468



website: www.AffinityRealEstate.com | email: info@affinityrealestate.com | office: 218-237-3333 | fax:218-237-3377

Affinity
REAL ESTATE INC

\$825,000
MLS 7083930 Lake Home
11695 Eagle View Trail
Nisswa MN 56468



website: www.AffinityRealEstate.com | email: info@affinityrealestate.com | office: 218-237-3333 | fax:218-237-3377

Affinity
REAL ESTATE INC

\$825,000
MLS 7083930 Lake Home
11695 Eagle View Trail
Nisswa MN 56468



website: www.AffinityRealEstate.com | email: info@affinityrealestate.com | office: 218-237-3333 | fax:218-237-3377



\$825,000
MLS 7083930 Lake Home
11695 Eagle View Trail
Nisswa MN 56468



website: www.AffinityRealEstate.com | email: info@affinityrealestate.com | office: 218-237-3333 | fax:218-237-3377

Affinity
REAL ESTATE INC

\$825,000
MLS 7083930 Lake Home
11695 Eagle View Trail
Nisswa MN 56468



website: www.AffinityRealEstate.com | email: info@affinityrealestate.com | office: 218-237-3333 | fax:218-237-3377



\$825,000
MLS 7083930 Lake Home
11695 Eagle View Trail
Nisswa MN 56468



website: www.AffinityRealEstate.com | email: info@affinityrealestate.com | office: 218-237-3333 | fax:218-237-3377



\$825,000
MLS 7083930 Lake Home
11695 Eagle View Trail
Nisswa MN 56468