



MLS 7084041 Lake Home

**\$300,000**

820 sq ft  
3 bedrooms  
1 baths

16358 County Road 64  
Miltona MN 56354

Waterfront: Irene

Status: Pending

**Description:**

Simplicity at the lake is hard to top as is quality lakeshore. You can have both with this 2 parcel lake property (one bedroom in the cottage & two bedrooms in a bunkhouse attached to 2-stall garage). The cottage has a large screened in porch facing sunsets & hard bottomed, sandy lakeshore on spring fed Lake Irene. With improvements and updates the owners have performed it is ready to be moved into & ready for memories to be rekindled and newly made. Note: square footage figures include both the cottage & bunkhouse.

**Additional Details:**

Year Built	1946
Lot Acres	0.34
Lot Dimensions	60 x 358 x 32 x 356
Garage Stalls	2
School District	206
Taxes	\$1,190
Taxes with Assessments	\$1,624
Tax Year	2026

**Additional Features:**

**Basement:** Crawl Space **Fuel:** Electric **Garage:** 2 **Heat:** Baseboard **Sewer:** Holding Tank, Private Sewer **Water:** Well **Air Conditioning:** Wall Unit(s), Window Unit(s)

**Driving Directions:**

Hwy 29 N from Alexandria, right onto County Rd 14, left on CR 64. Park at the garage.



Listed By:  
Alex Brokers Realty, LLC

Affinity Real Estate Inc. participates in the Regional Multiple Listing Service of Minnesota, Inc Broker Reciprocity (sm) program, allowing us to display other broker's listings on our website. All properties are subject to prior sale, change or withdrawal.



Call Affinity Real Estate

**218-237-3333**

[info@affinityrealestate.com](mailto:info@affinityrealestate.com)



Affinity Real Estate - 600 Park Avenue South - Park Rapids MN 56470



website: [www.AffinityRealEstate.com](http://www.AffinityRealEstate.com) | email: [info@affinityrealestate.com](mailto:info@affinityrealestate.com) | office: 218-237-3333 | fax:218-237-3377

**Affinity**  
REAL ESTATE INC

**\$300,000**  
MLS 7084041 Lake Home  
16358 County Road 64  
Miltona MN 56354



website: [www.AffinityRealEstate.com](http://www.AffinityRealEstate.com) | email: [info@affinityrealestate.com](mailto:info@affinityrealestate.com) | office: 218-237-3333 | fax:218-237-3377



**\$300,000**  
MLS 7084041 Lake Home  
16358 County Road 64  
Miltona MN 56354



website: [www.AffinityRealEstate.com](http://www.AffinityRealEstate.com) | email: [info@affinityrealestate.com](mailto:info@affinityrealestate.com) | office: 218-237-3333 | fax:218-237-3377

**Affinity**  
REAL ESTATE INC

**\$300,000**  
MLS 7084041 Lake Home  
16358 County Road 64  
Miltona MN 56354



website: [www.AffinityRealEstate.com](http://www.AffinityRealEstate.com) | email: [info@affinityrealestate.com](mailto:info@affinityrealestate.com) | office: 218-237-3333 | fax: 218-237-3377

**Affinity**  
REAL ESTATE INC

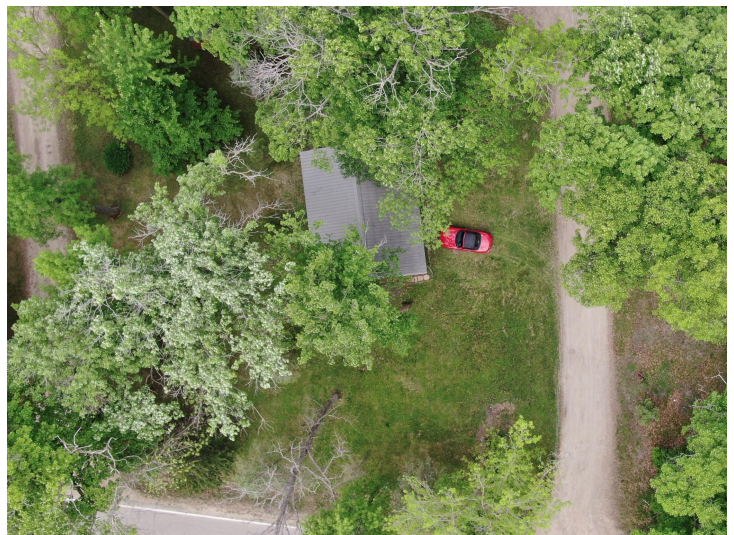
**\$300,000**  
MLS 7084041 Lake Home  
16358 County Road 64  
Miltona MN 56354



website: [www.AffinityRealEstate.com](http://www.AffinityRealEstate.com) | email: [info@affinityrealestate.com](mailto:info@affinityrealestate.com) | office: 218-237-3333 | fax:218-237-3377



**\$300,000**  
MLS 7084041 Lake Home  
16358 County Road 64  
Miltona MN 56354



website: [www.AffinityRealEstate.com](http://www.AffinityRealEstate.com) | email: [info@affinityrealestate.com](mailto:info@affinityrealestate.com) | office: 218-237-3333 | fax: 218-237-3377

**Affinity**  
REAL ESTATE INC

**\$300,000**  
MLS 7084041 Lake Home  
16358 County Road 64  
Miltona MN 56354



website: [www.AffinityRealEstate.com](http://www.AffinityRealEstate.com) | email: [info@affinityrealestate.com](mailto:info@affinityrealestate.com) | office: 218-237-3333 | fax:218-237-3377



**\$300,000**  
MLS 7084041 Lake Home  
16358 County Road 64  
Miltona MN 56354