



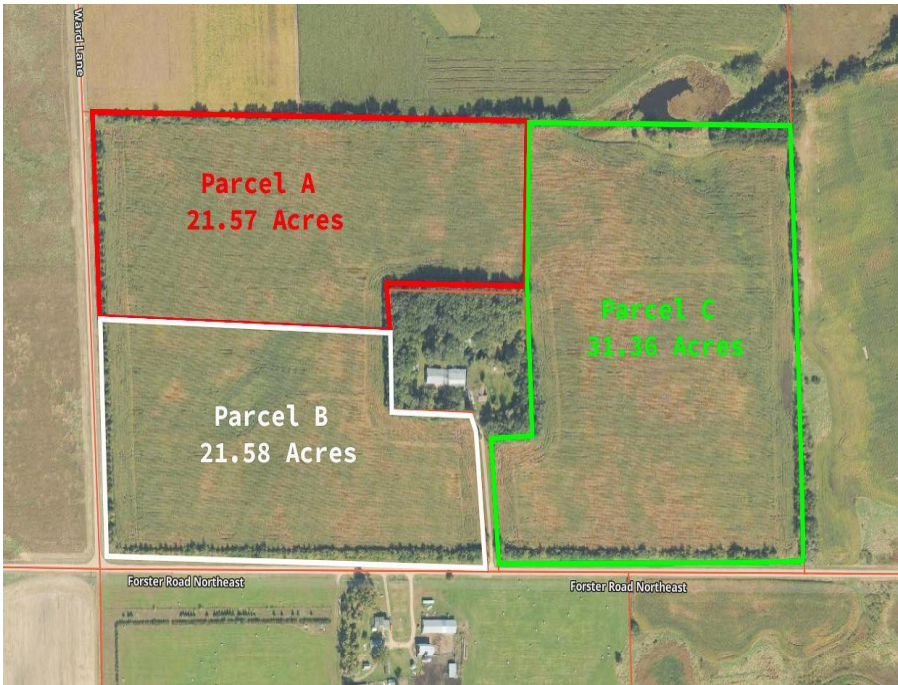
MLS 7084045 Land

\$179,000

21.57 Acres
Other

Ward Lane Ward Lane
Carlos MN 56319

Status: Active



Description:

75.21 Acres Total – Split into Three Parcels with Exceptional Potential Near Alexandria Lakes Area. Rare opportunity to own 75.21 acres divided into three separate parcels, offering flexibility for farming, building, recreation, or investment.

- Parcel 1: 21.57 acres
- Parcel 2: 21.58 acres
- Parcel 3: 31.36 acres

This property features excellent farm ground with productive agricultural potential, along with outstanding rural building sites ideal for those seeking privacy, space, and the opportunity to keep animals. The diverse landscape also provides excellent hunting and outdoor recreational opportunities.

Whether you're looking to build your dream country home, expand a farming operation, enjoy a private hunting retreat, or secure a long-term land investment, this property offers endless possibilities.

Conveniently located just a short drive from the Alexandria Lakes Area, you'll enjoy the perfect balance of the peace and quiet of the rural setting and easy access to lakes, recreation, shopping, dining, and local amenities.

Invest, build, farm, or hunt—this versatile acreage is ready for your vision. Purchase the one you love or buy them all!

Additional Details:

Lot Acres	21.57
Lot Dimensions	1 1 1 1
School District	206
Taxes	\$1,002
Taxes with Assessments	\$1,002
Tax Year	2026

Additional Features:



Listed By:
Central MN Realty LLC

Driving Directions: Affinity Real Estate Inc. participates in the Regional Multiple Listing Service of Minnesota, Inc. Broker Reciprocity (sm) program, allowing us to display other broker's listings on our website. All properties are on Ward Ln and Forster Road about 1/2 mile ahead. See signs. subject to prior sale, change or withdrawal.



Call Affinity Real Estate

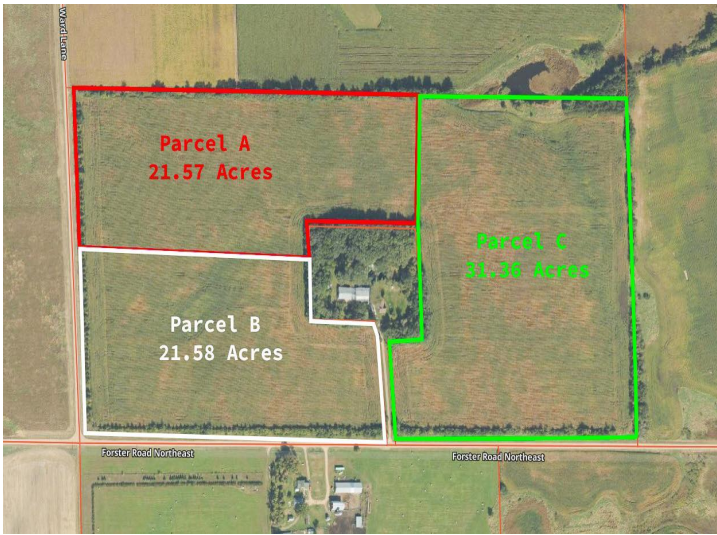
218-237-3333

info@affinityrealestate.com



and take a right. Land is

Affinity Real Estate - 600 Park Avenue South - Park Rapids MN 56470



website: www.AffinityRealEstate.com | email: info@affinityrealestate.com | office: 218-237-3333 | fax:218-237-3377



\$179,000
MLS 7084045 Land
Ward Lane Ward Lane
Carlos MN 56319

website: www.AffinityRealEstate.com | email: info@affinityrealestate.com | office: 218-237-3333 | fax:218-237-3377



\$179,000

MLS 7084045 Land
Ward Lane Ward Lane
Carlos MN 56319